

PLAT AND RECORD

403
VOL. 5

Of a Survey on Section 1, 25 T 4 R 14 E. of the 4 P. M. in LIMA Township
Rock County, Wisconsin, made APRIL the 4 1978

I hereby certify that the following is a correct record of said survey as made by me.

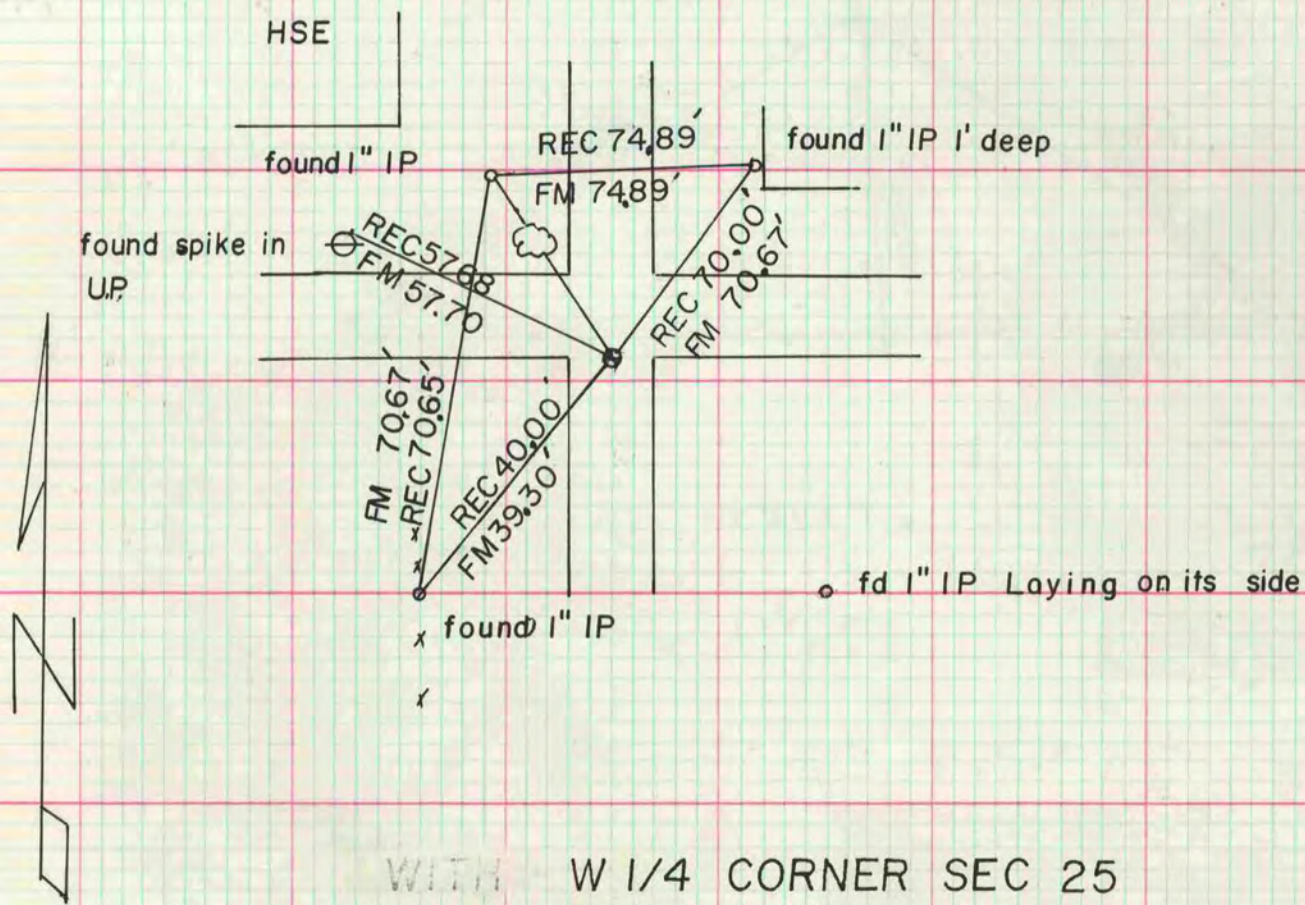
COUNTY BUILDING
CITY OF JANESVILLE



W 1/4 COR SEC 1 FOUND 1" IP AS PREVIOUSLY FOUND & VERIFIED,
SET ALUM MON

NE CORNER SEC 1

FOUND CONCRETE MONUMENT WITH BRASS CAP



WITH W 1/4 CORNER SEC 25

DUG & FOUND NOTHING, AT FENCE INTERSECTION. DECLARED CORNER
LOST & SET ALUM. MON ON LINE WITH NW & SW CORNER OF SECTION 25
AT SINGLE PROPORTIONATE DISTANCE.

