

# PLAT AND RECORD

413  
VOL. 5

Of a Survey on Section 19 T 4 R 10 E. of the 4 P. M. in MAGNOLIA Township  
Rock County, Wisconsin, made APRIL the 25 1978

I hereby certify that the following is a correct record of said survey as made by me.

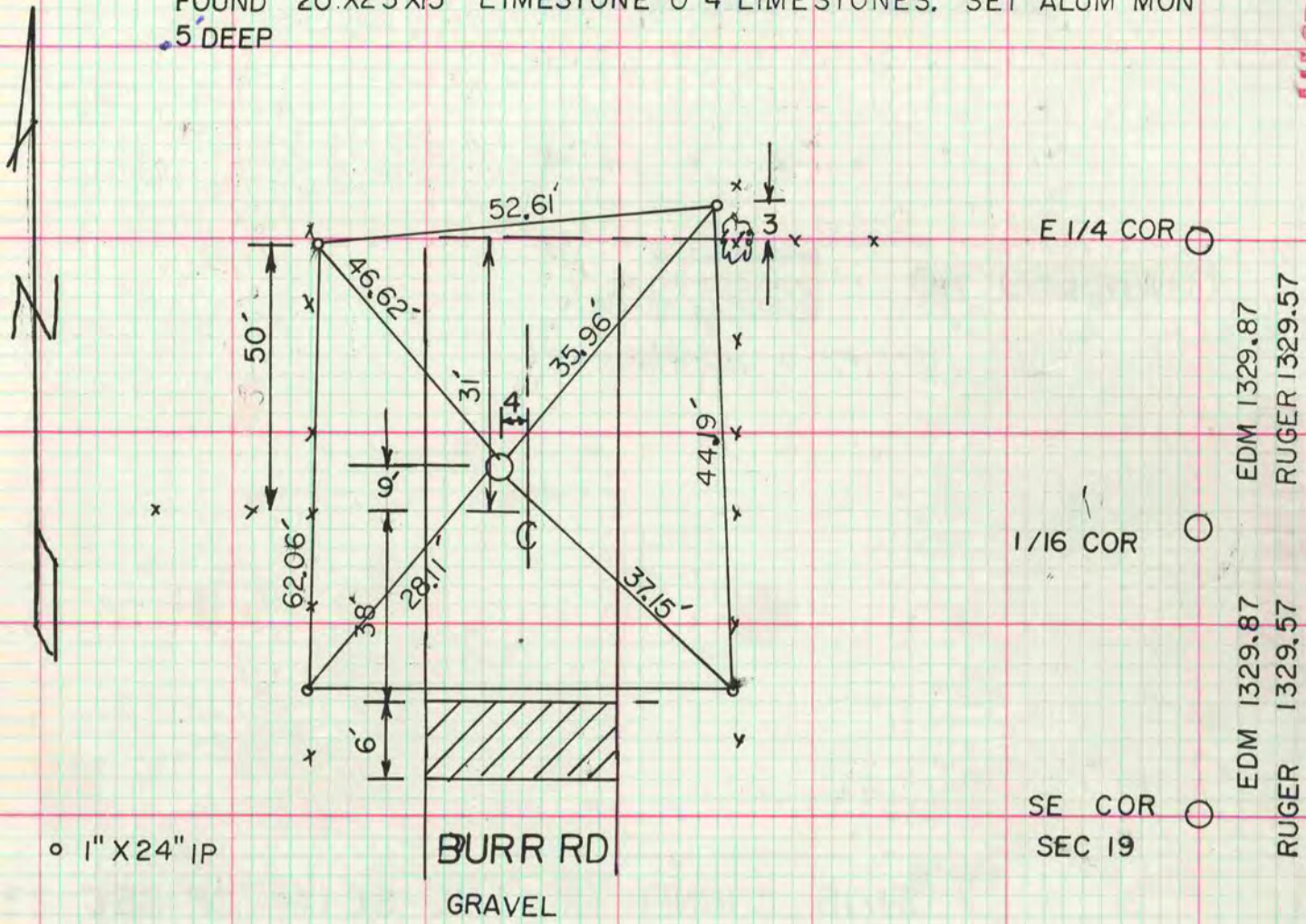
COUNTY BUILDING  
CITY OF JANESVILLE



MICROFILMED

## E 1/4 CORNER OF SEC 19

~~DUG 3' TO BEDROCK & FOUND NOTHING~~  
FOUND 20"X25"X15" LIMESTONE O 4 LIMESTONES. SET ALUM MON  
5 DEEP



## NE CORNER OF SEC 19

DUG 6X6 HOLE 3' DEEP & FOUND NOTHING  
SET ON LINE WITH THE N1/4 CORNER & THE N1/16 CORNER OF THE NW1/4  
OF SECTION 20 AT SINGLE PROPORTIONATE DISTANCE. CONCRETE IS 0.5' DEEP  
AT THE CORNER,

