

PLAT AND RECORD

VOL. 5

Of a Survey on Section 11 T 4 R 14 E. of the 4 P. M. in LIMA Township

Rock County, Wisconsin, made APRIL the 27 1978

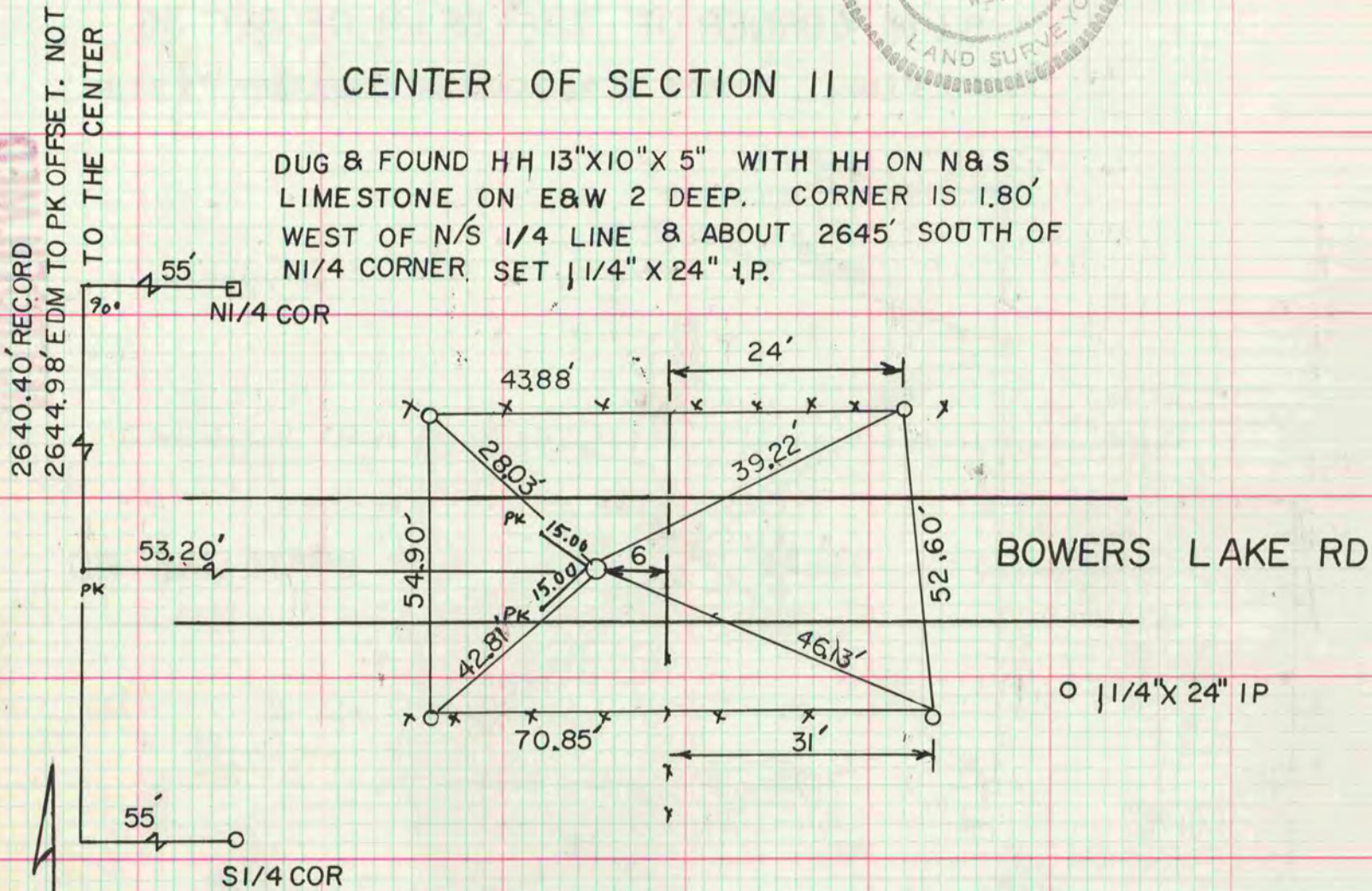
I hereby certify that the following is a correct record of said survey as made by me.

COUNTY BUILDING
CITY OF JANESVILLE



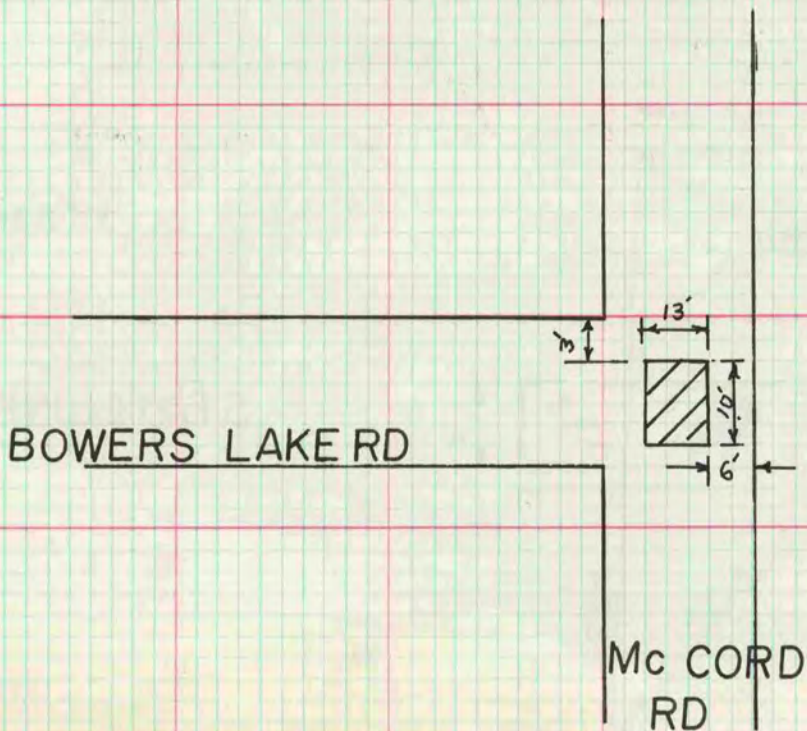
CENTER OF SECTION 11

DUG & FOUND HH 13"X10"X 5" WITH HH ON N&S
LIMESTONE ON E&W 2 DEEP. CORNER IS 1.80'
WEST OF N/S 1/4 LINE & ABOUT 2645' SOUTH OF
N1/4 CORNER. SET 1/4" X 24" I.P.



S 1/16 CORNER OF THE NE 1/4 OF
SEC 11

4' DEEP
DUG & FOUND NOTHING



MICROFILMED