

PLAT AND RECORD

VOL. 5

Of a Survey on Section 17 T 3 R 10 E. of the 4 P. M. in MAGNOLIA Township

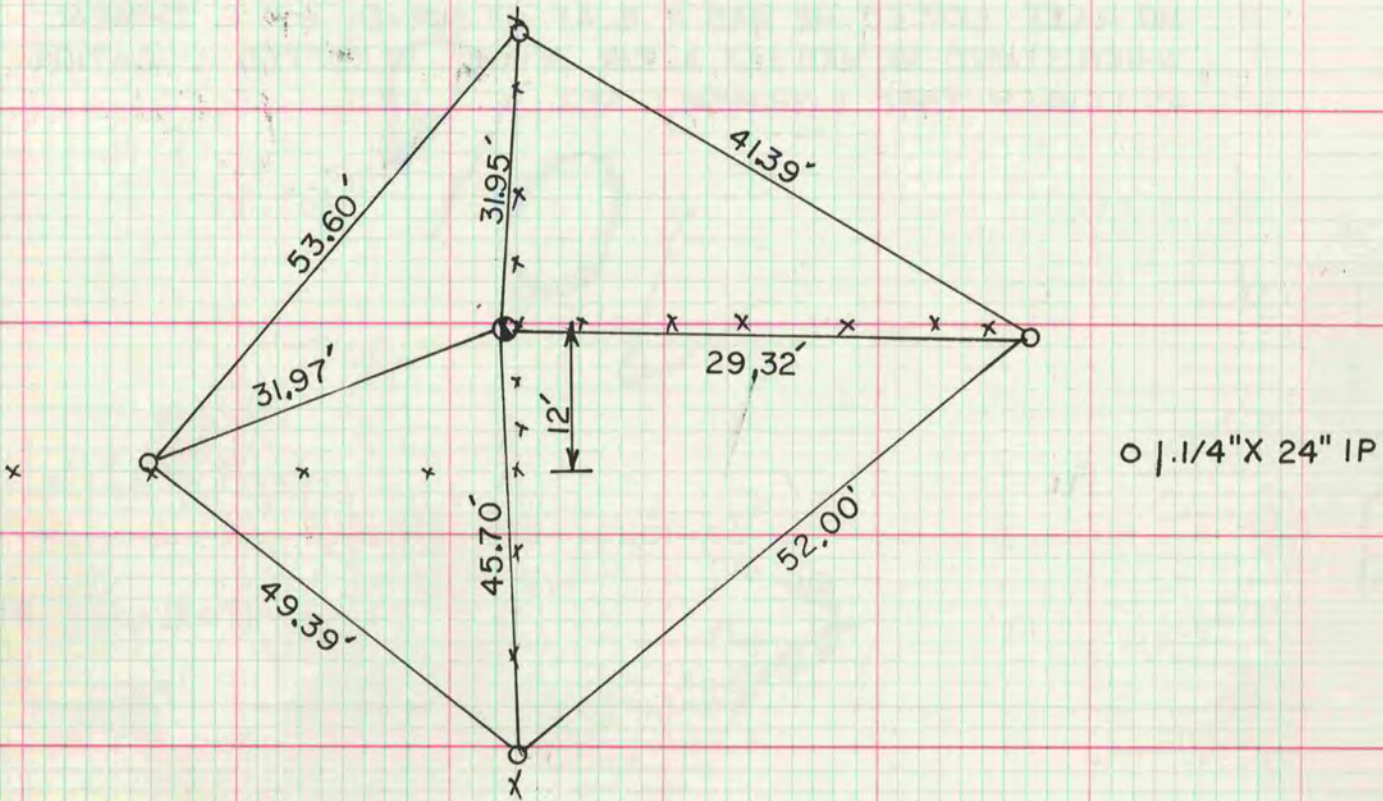
Rock County, Wisconsin, made MAY the 3

I hereby certify that the following is a correct record of said survey as made by me.

COUNTY BUILDING
CITY OF JANESVILLE



S 1/16 CORNER OF THE SW 1/4 OF SEC 17
FOUND SANDSTONE 5" X 12" SET IP HORIZONTALLY 1' DEEP NEXT TO
STONE.



S 1/4 CORNER OF SEC 17
FOUND LIMESTONE 9" WIDE AT THE BASE, 3" WIDE AT THE TOP,
& 24" LONG, SET ALUM MON.



MICROFILMED