

# PLAT AND RECORD

COUNTY BUILDING  
CITY OF JANESVILLE

Of a Survey on Section **8** T **3** R **12** E. of the 4 P. M. in **JANESVILLE** Township

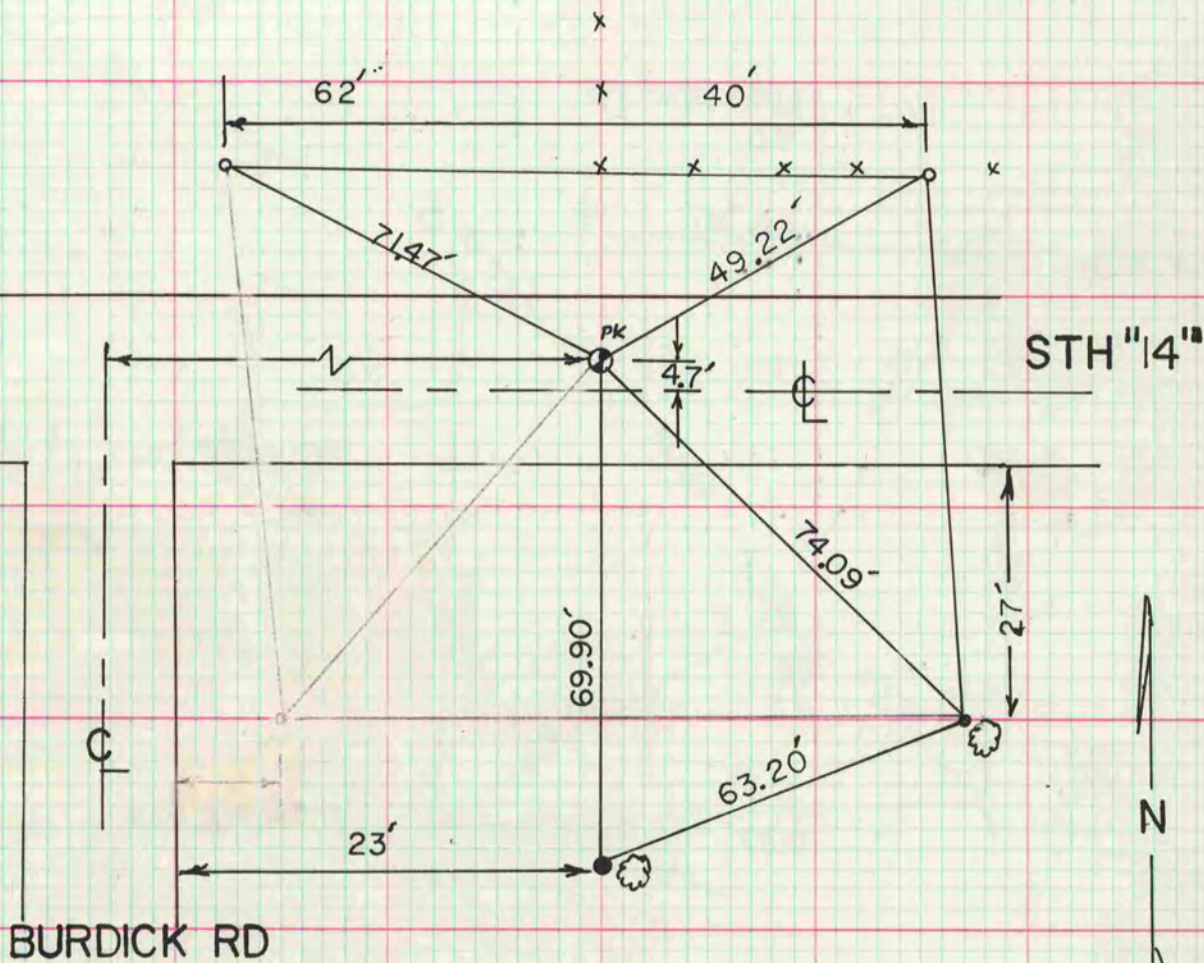
Rock County, Wisconsin, made **MAY** the **8** 19**78**

I hereby certify that the following is a correct record of said survey as made by me.



## SE CORNER SEC 8

DICK TOM RESET CORNER FROM A SURVEY  
ON THE EAST SIDE OF SEC 17



- 1/4" X 24" IP
- GI MGN WITH CAP

MICROFILMED