

PLAT AND RECORD

421

VOL. 5

COUNTY BUILDING
CITY OF JANESVILLE

Of a Survey on Section 19 T 3 R 10 E. of the 4 P. M. in MAGNOLIA Township

Rock County, Wisconsin, made MAY 10 1978 the

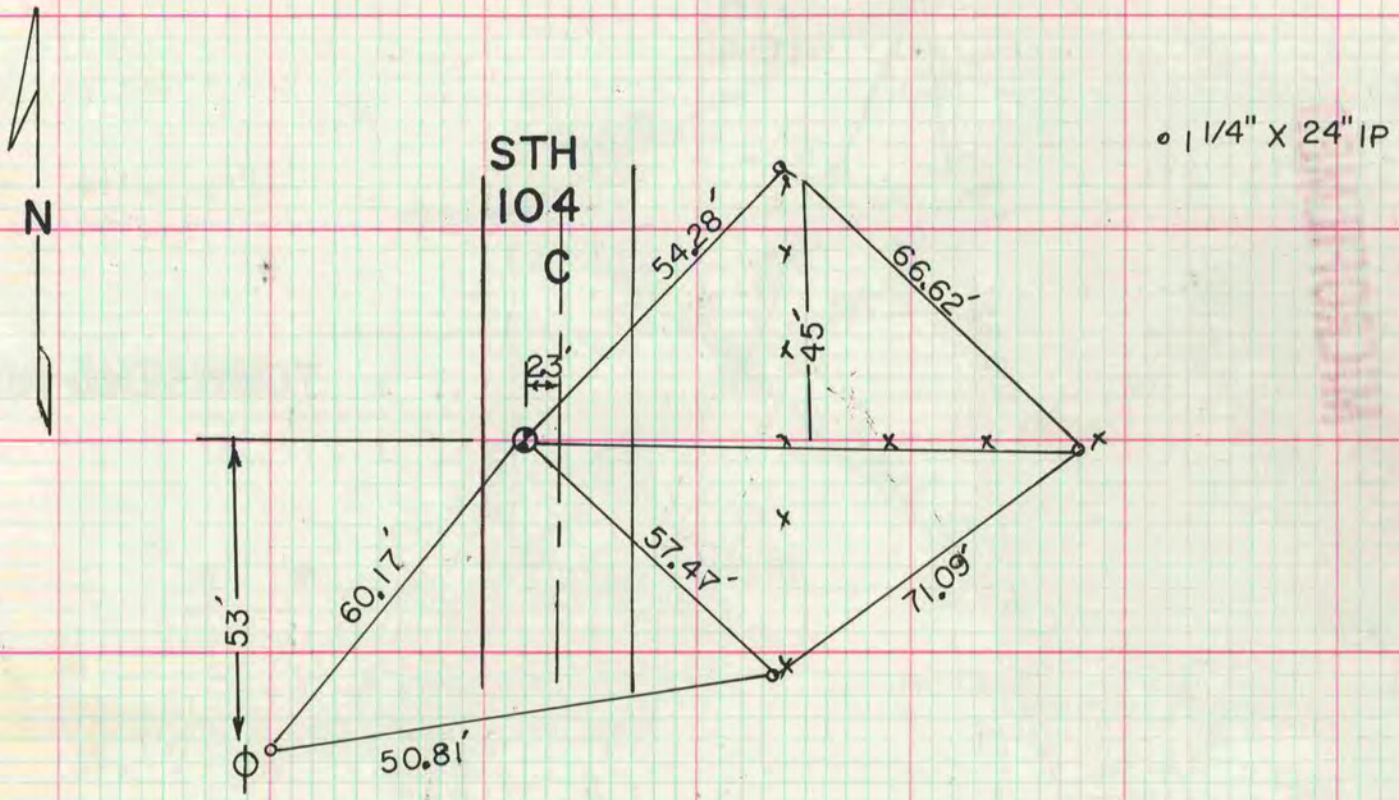
I hereby certify that the following is a correct record of said survey as made by me.

COURT CLERK
CITY OF JANESVILLE



NW CORNER OF SEC 19

FORMER COUNTY SURVEYOR DUG & FOUND NOTHING VOL 3 PAGE 353.
OCCUPATION IS IN HARMONY WITH RECORD DISTANCE TO THE EAST
AND IN HARMONY WITH OCCUPATION TO THE SOUTH. SET ALUM MON
ON LINE WITH E 1/4 & SE CORNER OF SEC 24 T3N R9E.
2' DEEP FOUND OLD ASPHALT RD.



MICROFILMED

W 1/4 CORNER OF SEC 19

FORMER COUNTY SURVEYOR DUG & FOUND NOTHING VOL 3 PAGE 353
SET ON LINE WITH THE NE & E 1/4 CORNER OF SECTION 25 R9E T3 N
MIDWAY BETWEEN THE NW & SW CORNERS OF SEC 19, SET ALUM MON
1' DEEP FOUND OLD ASPHALT RD.

1" X 24" IP

