

PLAT AND RECORD

425

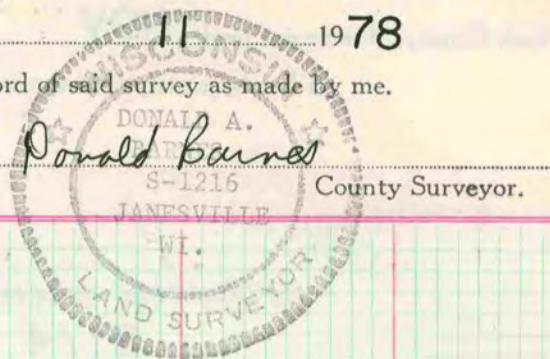
VOL. 5

COUNTY BUILDING
CITY OF JANESVILLE

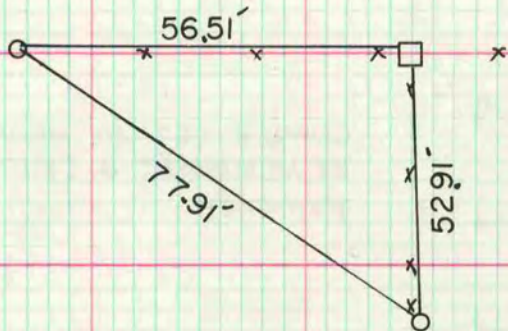
Of a Survey on Section 29 T. 2 R. 11 E. of the 4 P. M. in PLYMOUTH Township

Rock County, Wisconsin, made MAY 11 1978

I hereby certify that the following is a correct record of said survey as made by me.



N 1/4 COR SEC 29
FOUND CUT LIMESTONE 0.5' DEEP



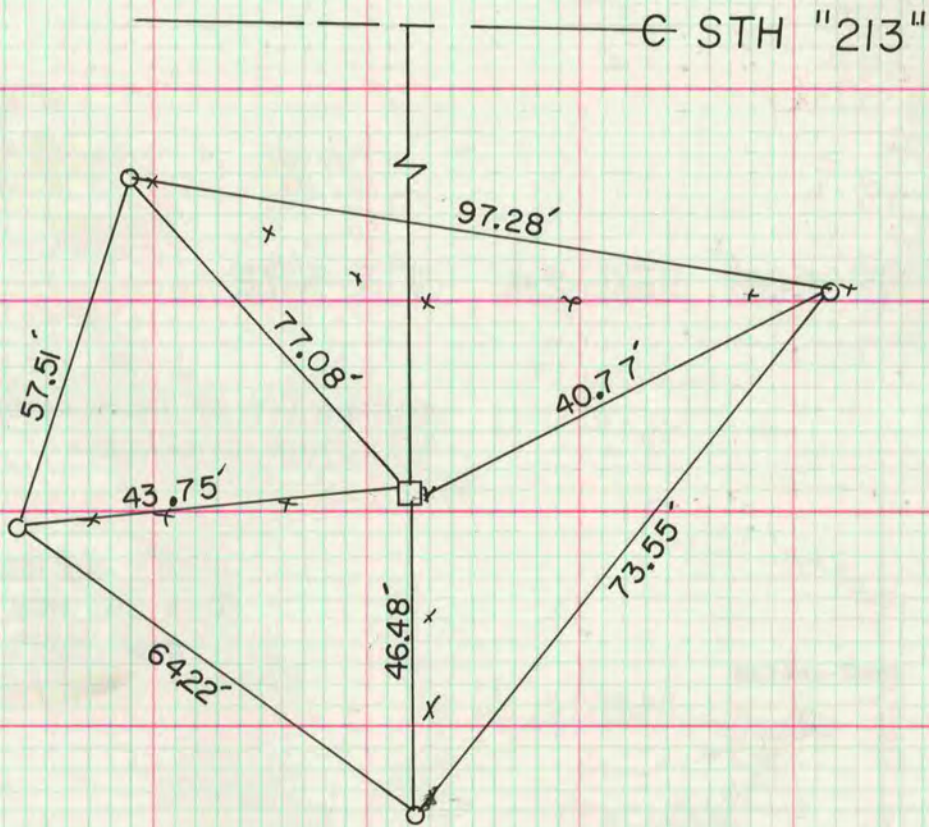
1 1/4" X 24" IP

o GIMON WITH CAP

MICROFILMED

W 1/4 COR SEC 29

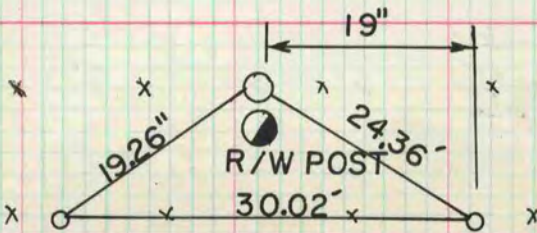
FOUND CUT LIMESTONE 0.5 ABOVE THE GROUND



o 1 1/4" X 24" IP

N 1/16 COR OF THE NE 1/4 OF SEC 29

FOUND H.H. 21" X 8" X 8" @ 3 LIMESTONES. PLACED 2" X 24" IP HORIZONTALLY ON S SIDE OF HH. 1' DEEP



o 1 1/4" X 24" IP