

# PLAT AND RECORD

COUNTY BUILDING  
CITY OF JANESVILLE

Of a Survey on Section 29 T 1 R 14 E. of the 4 P. M. in CLINTON Township

Rock County, Wisconsin, made MAY the 25 1978

I hereby certify that the following is a correct record of said survey as made by me.

*Donald Barnes*

DONALD A. BARNES

JANESVILLE

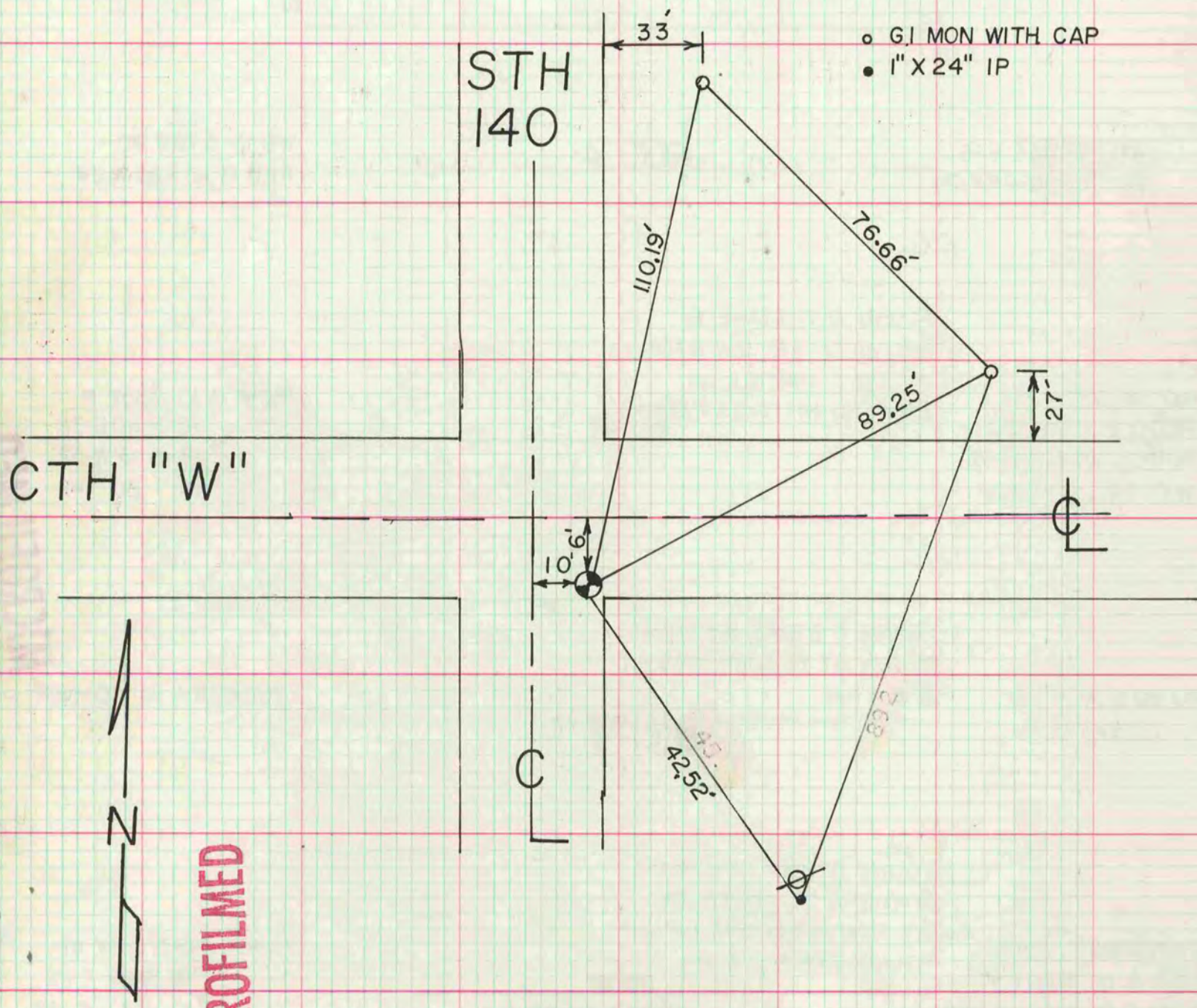
WI.

County Surveyor.



## 1/4 CORNER OF SEC 29

FOUND PK SET BY H LEE ON LINE WITH SE & SW CORNERS OF SECTION 29 AT SINGLE PROPORTIONATE DISTANCE, HE USED CORNER FOR CSM VOL 5 PG 276



MICROFILMED