

PLAT AND RECORD

COUNTY BUILDING
CITY OF JANESVILLE

433

VOL. 5

Of a Survey on Section 4 T 4 R 12 E. of the 4 P. M. in **FULTON** Township

Rock County, Wisconsin, made **MAY** the **30** 1978

I hereby certify that the following is a correct record of said survey as made by me.
COUN. JING CITY OF JANESVILLE



County Surveyor.

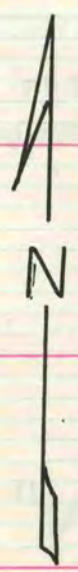
N 1/4 COR OF SEC 4

DUG & FOUND NOTHING. SET MIDWAY BETWEEN NE & NW CORNER OF SECTION 4 & ON LINE WITH THE SW 1/4 & SE CORNER OF SECTION 33 T5N R12 E, SET ALUM MON 1.5' NORTH OF E/W FENCE.

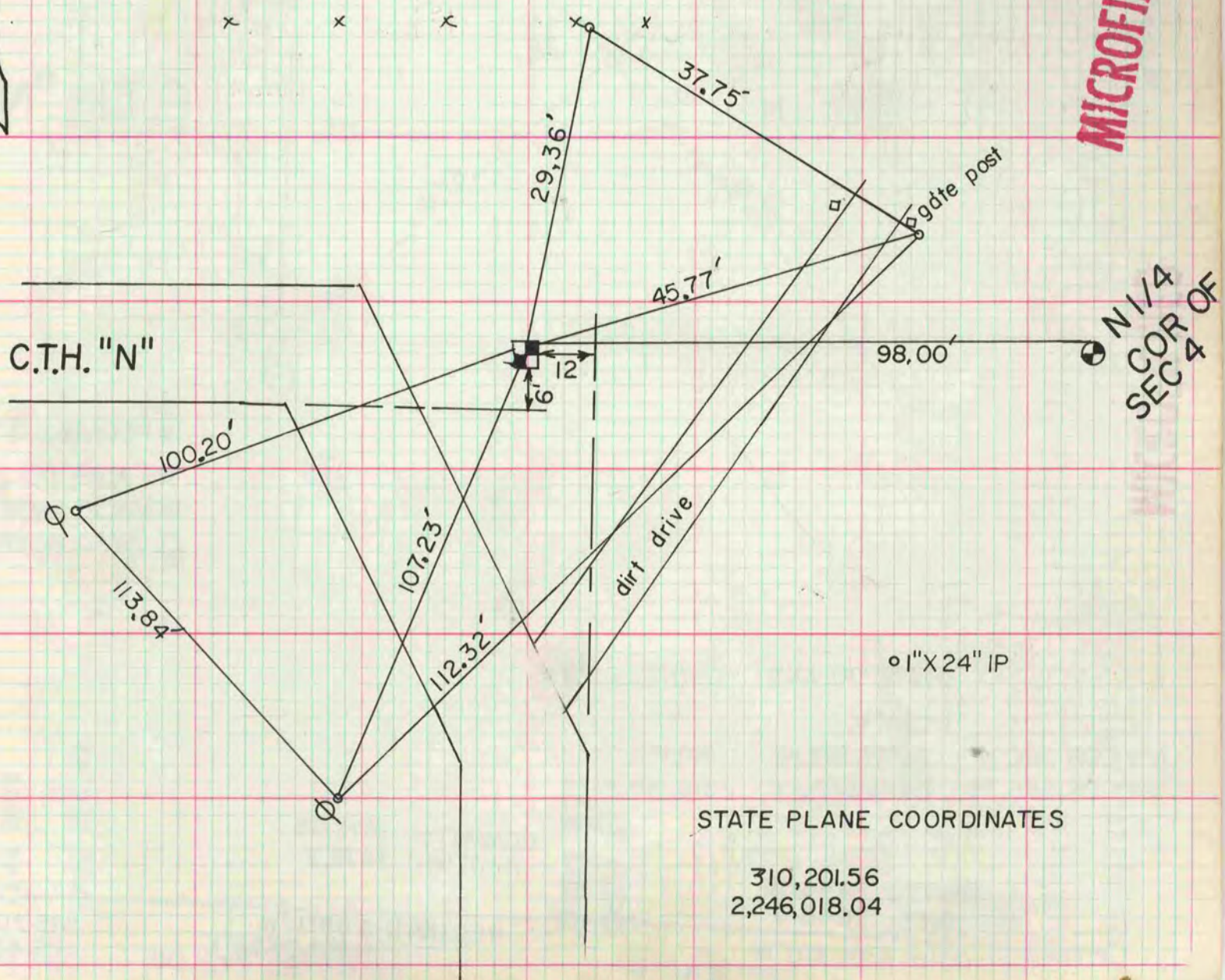
STATE PLANE COORDINATES
310,203.16 N/S
2,246,116.03 E/W

S 1/4 COR OF SEC 33 T5N R12E

FOUND SQUARE CONCRETE MON 1' DEEP, SET 2" IP HORIZONTALLY ON SOUTH SIDE



MICROFILMED



STATE PLANE COORDINATES
310,201.56
2,246,018.04