

PLAT AND RECORD

COUNTY BUILDING
CITY OF JANESVILLE

VOL. 5

Of a Survey on Section 4 T 4 R 12 E. of the 4 P. M. in FULTON Township

Rock County, Wisconsin, made MAY the 30 1978

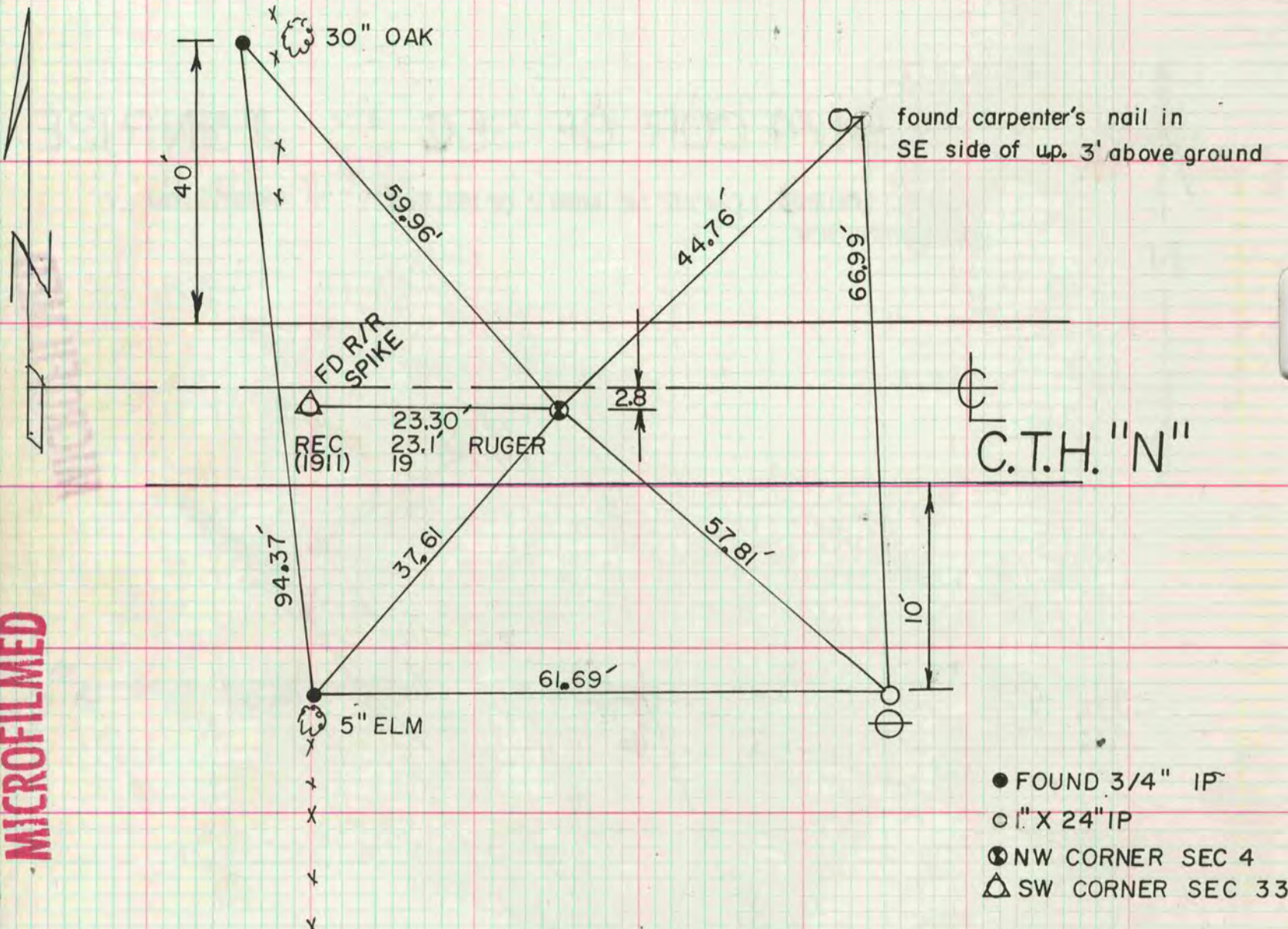
I hereby certify that the following is a correct record of said survey as made by me.

Donald Barnes
DONALD A. BARNES
JANESVILLE
County Surveyor.



NW CORNER OF SEC 4

FORMER COUNTY SURVEYOR DUG & FOUND NOTHING, VOL 4-PG 467. FOUND R/R SPIKE ON LINE WITH SW & S1/4 CORNER OF SEC 33 T5 R12E. SET ALUM MON.

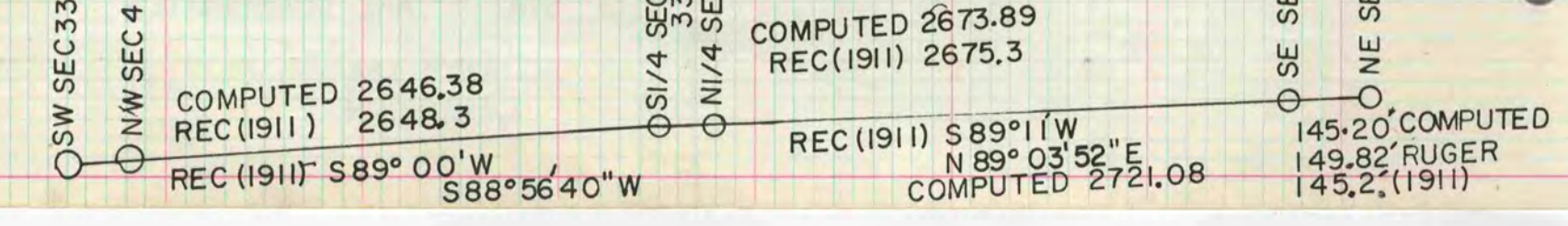


MICROFILMED

- FOUND 3/4" IP
- 1" X 24" IP
- ⊙ NW CORNER SEC 4
- △ SW CORNER SEC 33

STATE PLANE COORDINATES

	E/W	N/S
NW COR SEC 4	2243,395.41	310,153.24
SW COR SEC 33	2,243,372.11	310,152.81



COMPUTED 2646.38
REC (1911) 2648.3

COMPUTED 2673.89
REC (1911) 2675.3

145.20' COMPUTED
149.82' RUGER
145.2' (1911)