

PLAT AND RECORD

437

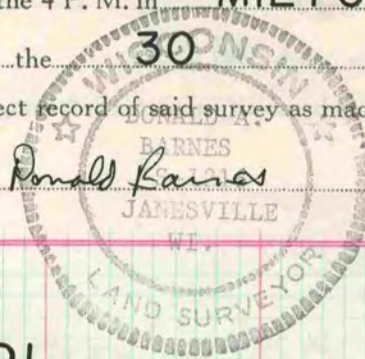
COUNTY BUILDING
CITY OF JANESVILLE

VOL. 5

Of a Survey on Section 21, 35 T. 4 R. 13 E. of the 4 P. M. in MILTON Township

Rock County, Wisconsin, made MAY 30 19 78

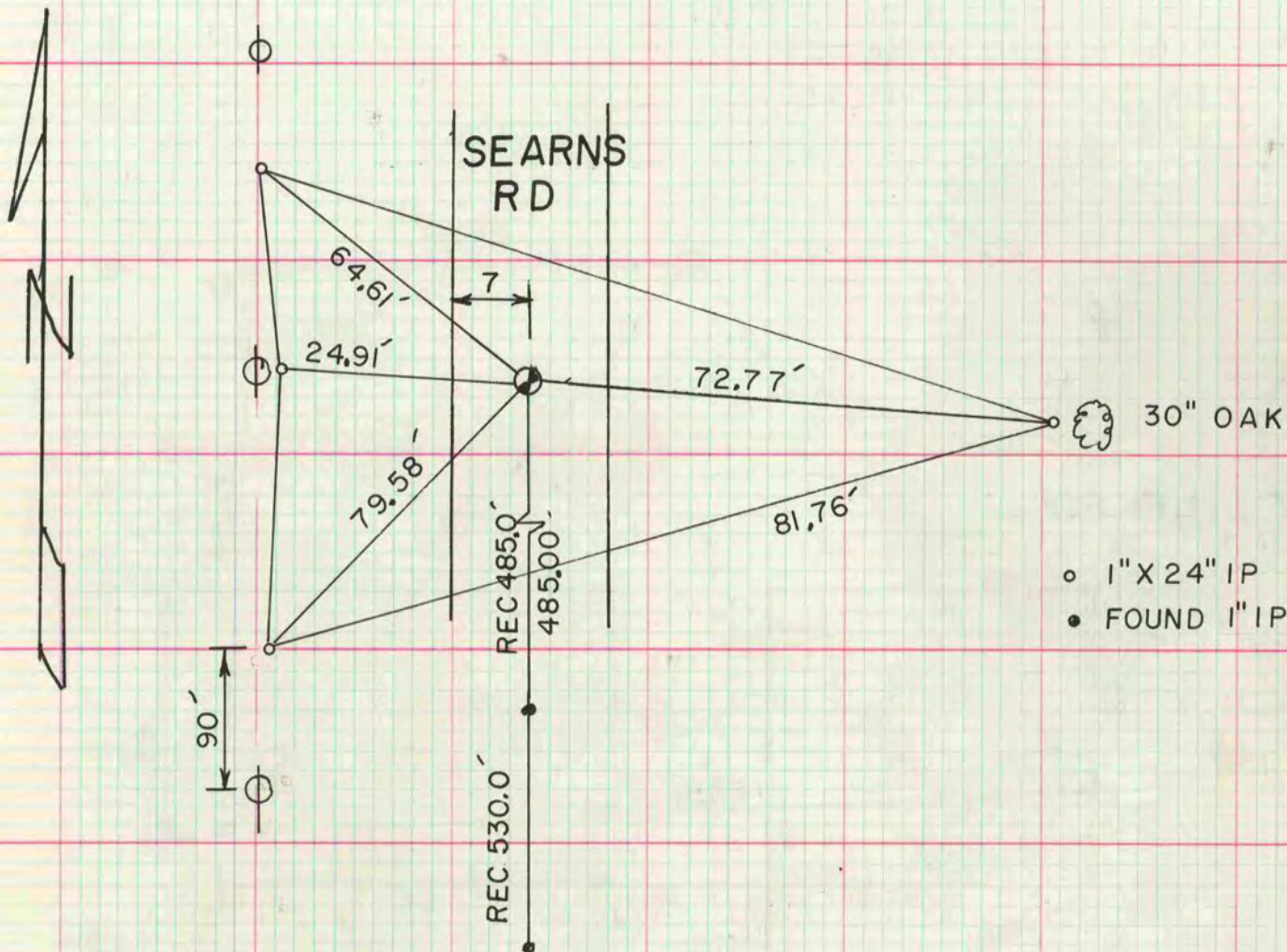
I hereby certify that the following is a correct record of said survey as made by me.



County Surveyor.

E1/4 COR OF SEC 21

FOUND 1" IP 2' DEEP. IT WAS IN HARMONY WITH CSM VOL 5 PG 52.
SET ALUM MON



MICROFILMED

S1/4 COR OF SEC 35

FOUND ALUM MON REFERENCED FOR ROAD CONSTRUCTION

