

PLAT AND RECORD

441
VOL. 5

COUNTY BUILDING
CITY OF JANESVILLE

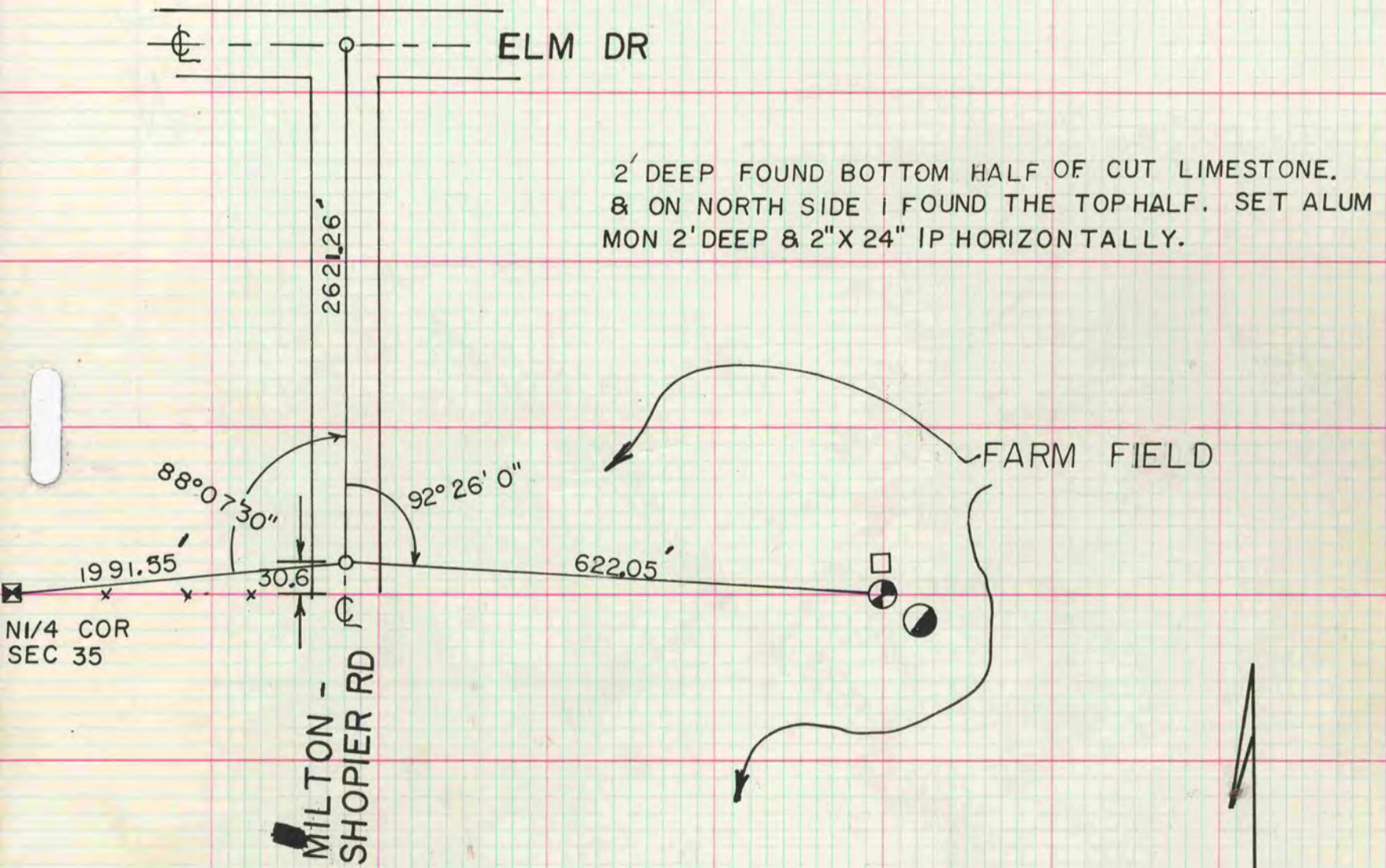
Of a Survey on Section 26,36 T. 2 R. 13 E. of the 4 P. M. in LA PRAIRIE Township
Rock County, Wisconsin, made JUNE the 14 1978

I hereby certify that the following is a correct record of said survey as made by me.



County Surveyor.

NW COR SEC 36



2' DEEP FOUND BOTTOM HALF OF CUT LIMESTONE.
& ON NORTH SIDE I FOUND THE TOP HALF. SET ALUM
MON 2' DEEP & 2" X 24" IP HORIZONTALLY.

- TOP HALF OF CUT LIMESTONE
- ALUM MON NW COR SEC 36
- R/W POST
- 1" X 24" IP

MICROFILMED

E 1/4 COR SEC 26

FOUND 2" X 24" IP & CUT LIMESTONE 30" DEEP SET ALUMMON