

PLAT AND RECORD

VOL. 5

COUNTY BUILDING
CITY OF JANESVILLE

COUNTY BUILDING
CITY OF JANESVILLE

Of a Survey on Section **24** T **I** R **II** E. of the 4 P. M. in **NEWARK** Township

Rock County, Wisconsin, made **JULY** the **31** 19**78**

I hereby certify that the following is a correct record of said survey as made by me.

Ronald Barnes
County Surveyor.



ORIG GOV	264792
COLLINS 1871	268092
Mc VEAN 1861	267036
LOCKE 1863	266904
KERCH 1911	
CALCULATED	267982

ORIG GOV	264792
KERCH 1911	2731.8
COLLINS 1871	272910
CALCULATED	272798

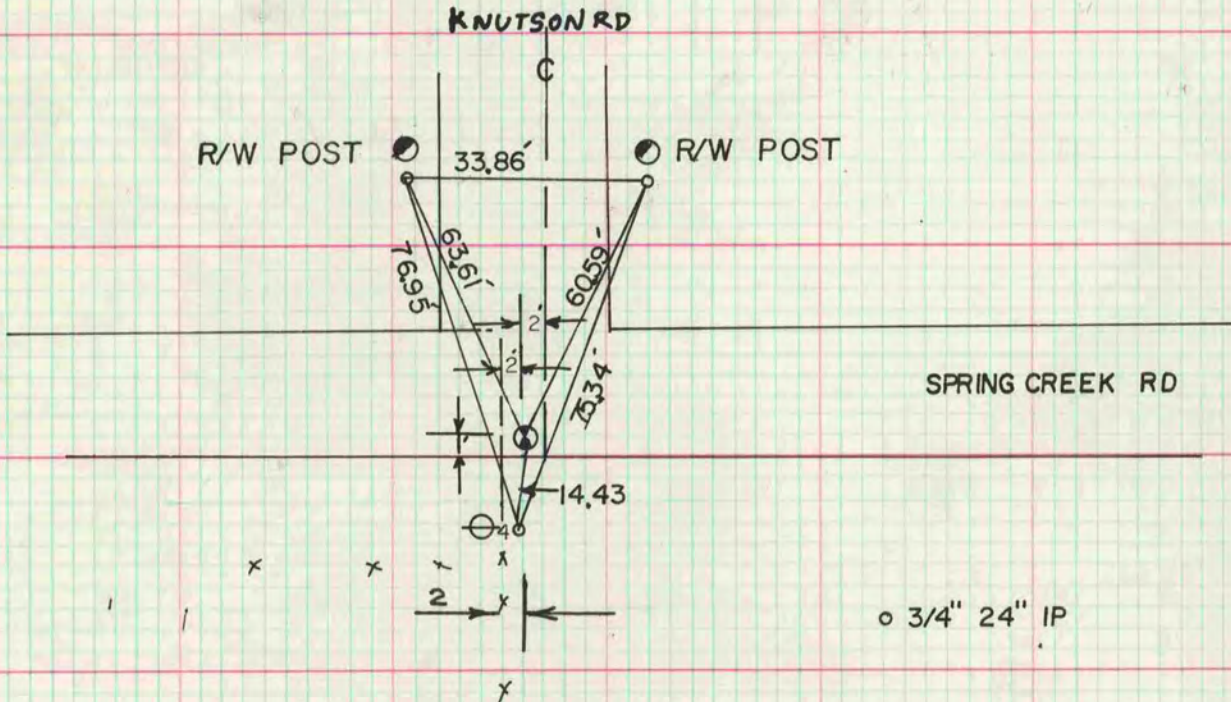
SW COR 1342 1338 1360 1368 SE COR

15 DEEP FOUND IRON HORIZONTAL POSITION

1/4 COR SEC 24

FORMER COUNTY SURVEYOR DUG & FOUND NOTHING VOL. 4 PG. 91. SET ON LINE WITH SE & SW CORNERS AT PRORATED DISTANCE WITH COLLINS REMONUMENTATION NOTES.

SET ALUM MON



MICROFILMED