

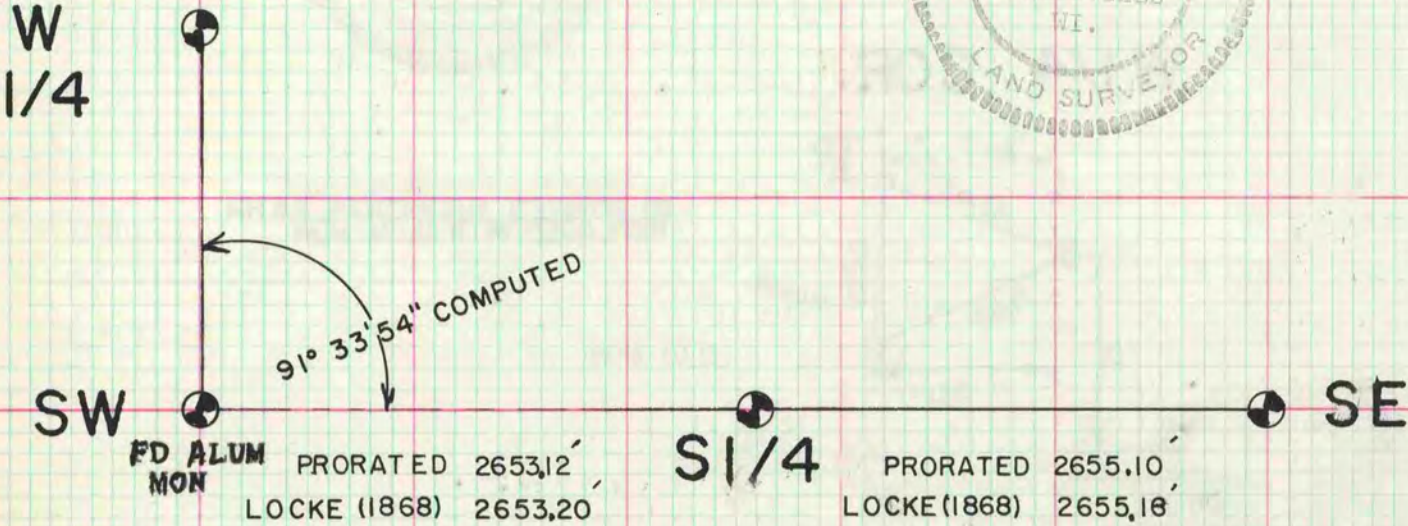
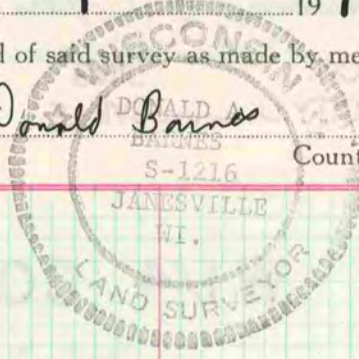
PLAT AND RECORD

COUNTY BUILDING
CITY OF JANESVILLE

Of a Survey on Section **21** T **2** R **11** E. of the 4 P. M. in **PLYMOUTH** Township
Rock County, Wisconsin, made **NOV** the **1** 19 **78**

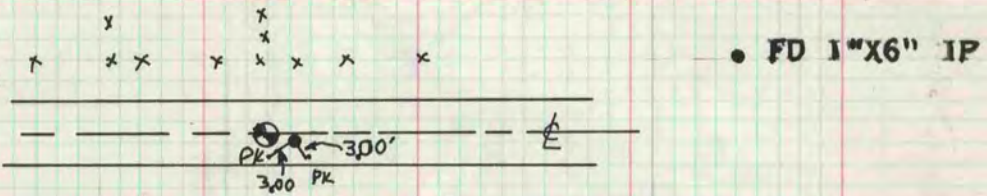
I hereby certify that the following is a correct record of said survey as made by me.

Donald Barnes
County Surveyor.



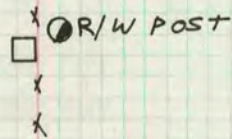
SE COR OF SEC 21

DUG AND FOUND CUT STONE 36" DEEP. SET ALUM MON. STONE IS .21 WEST & .07 NORTH OF ED. I.P.



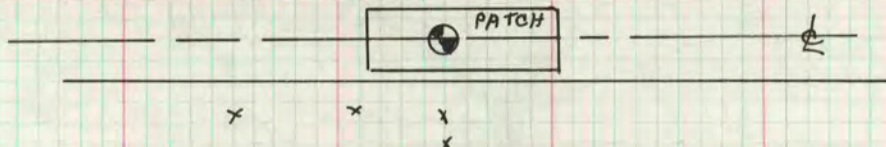
E. 1/4 COR OF SEC 21

FOUND CUT LIMESTONE .2 ABOVE THE GROUND. SET R/W POST ON NE SIDE OF STONE



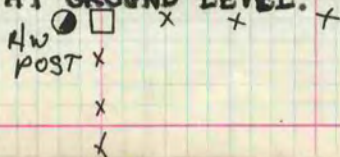
S 1/4 COR OF SEC 21

FORMER COUNTY SURVEYOR DUG & FOUND NOTHING. SET ALUM MON ON LINE WITH THE SW & SE CORNER OF SEC 21 AT SINGLE PROPORTIONATE DISTANCE. THIS IS IN HARMONY WITH LOCKE'S FIELD NOTES.



N 1/4 COR OF SEC 21

FOUND CUT STONE. 1/2 OF THE STONE WAS OUT OF THE GROUND AND LEANING AT ABOUT A 45 ANGLE. RESET STONE AT GROUND LEVEL.



MICROFILMED