

PLAT AND RECORD

507

VOL. 5

Of a Survey on Section **8** T. **4** R. **14** E. of the 4 P. M. in **LIMA** Township
Rock County, Wisconsin, made **DEC** the **11** 19 **78**

I hereby certify that the following is a correct record of said survey as made by me.

COUNTY BUILDING
CITY OF JANESVILLE

Donald Barnes



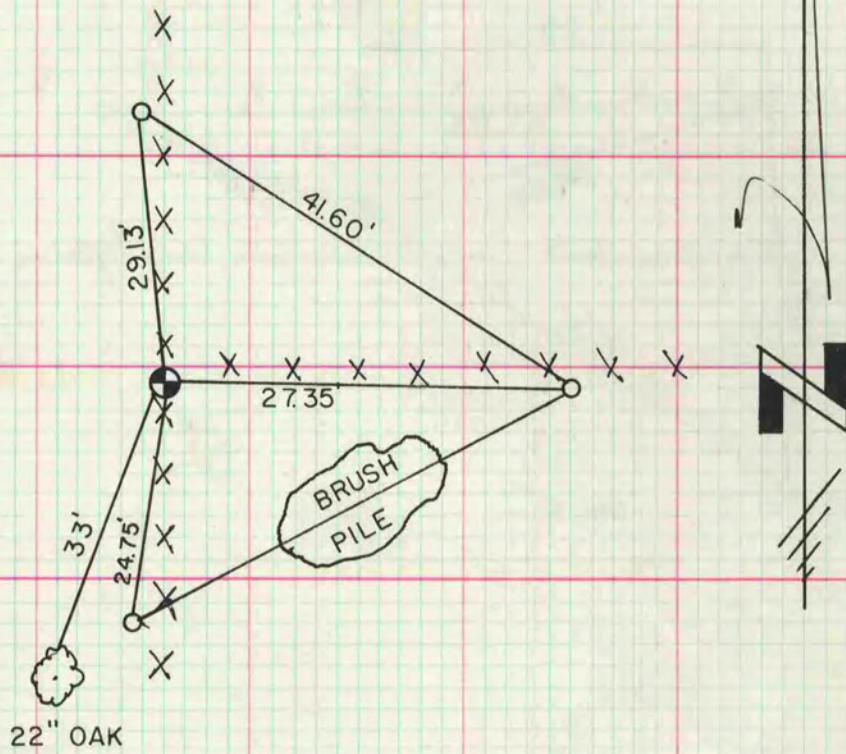
County Surveyor.

W 1/4 COR SEC 8

FD 1" I.P. WITH FLAGGING CSM VOL 2 PG 220

SET ALUM MON

o 1 1/4" X 24" I.P.



MICROFILMED