

PLAT AND RECORD

513
VOL. 5

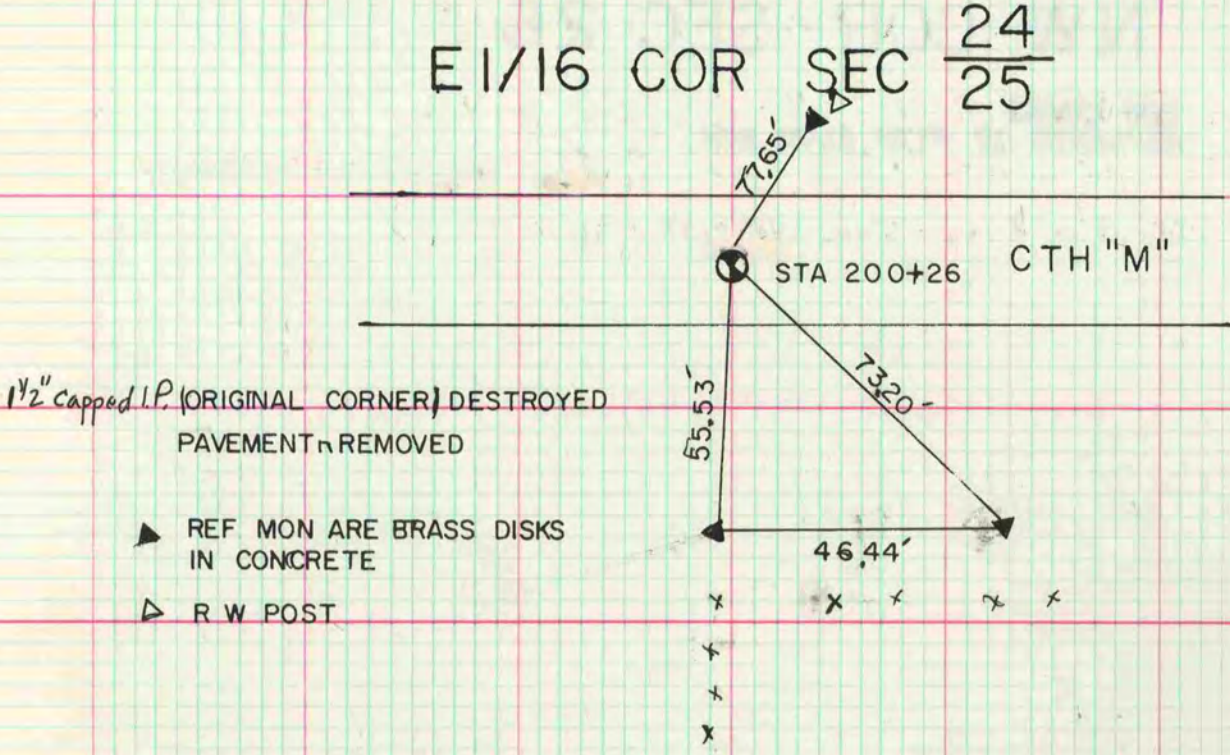
Of a Survey on Section 25 T. 4 R. 12 E. of the 4 P. M. in FULTON Township
Rock County, Wisconsin, made DEC the 8 1969

I hereby certify that the following is a correct record of said survey as made by me.

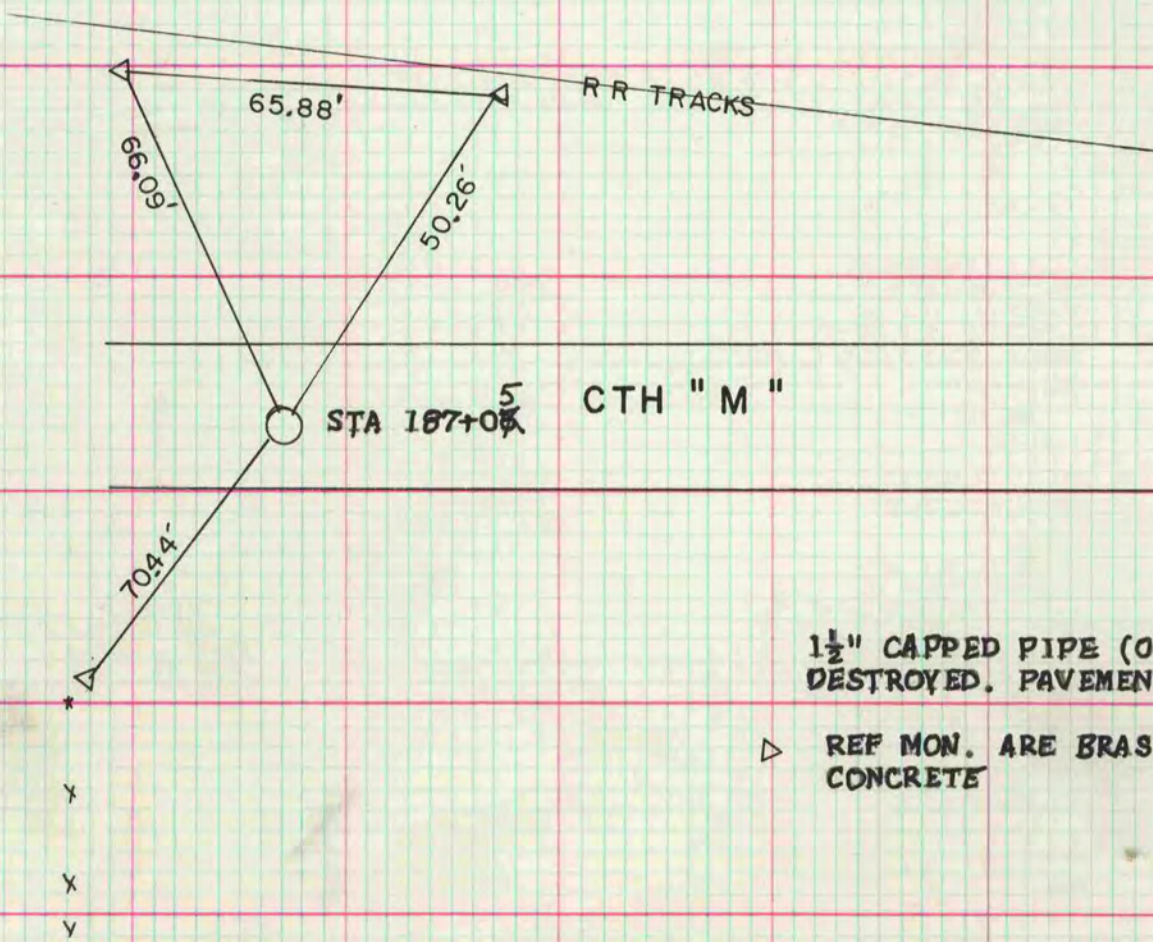
COUNTY BUILDING
CITY OF JANESVILLE

County Surveyor.

E 1/16 COR SEC $\frac{24}{25}$



N 1/4 SEC 25



INFORMATION FOUND IN COUNTY CLERK'S VAULT. CORNERS REFERENCED BY GILBERT BECKER, PROJECT ENGINEER, ON DEC 8 1969. PROJECT NUMBER 90453(6) ID 3656-1-70,71

MICROFILMED