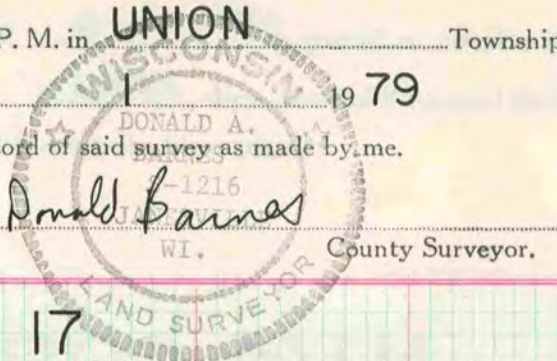


# PLAT AND RECORD

7,8,9  
Of a Survey on Section 18, 17, 16 T. 4 R. 10 E. of the 4 P. M. in UNION Township  
Rock County, Wisconsin, made MAY 1 19 79

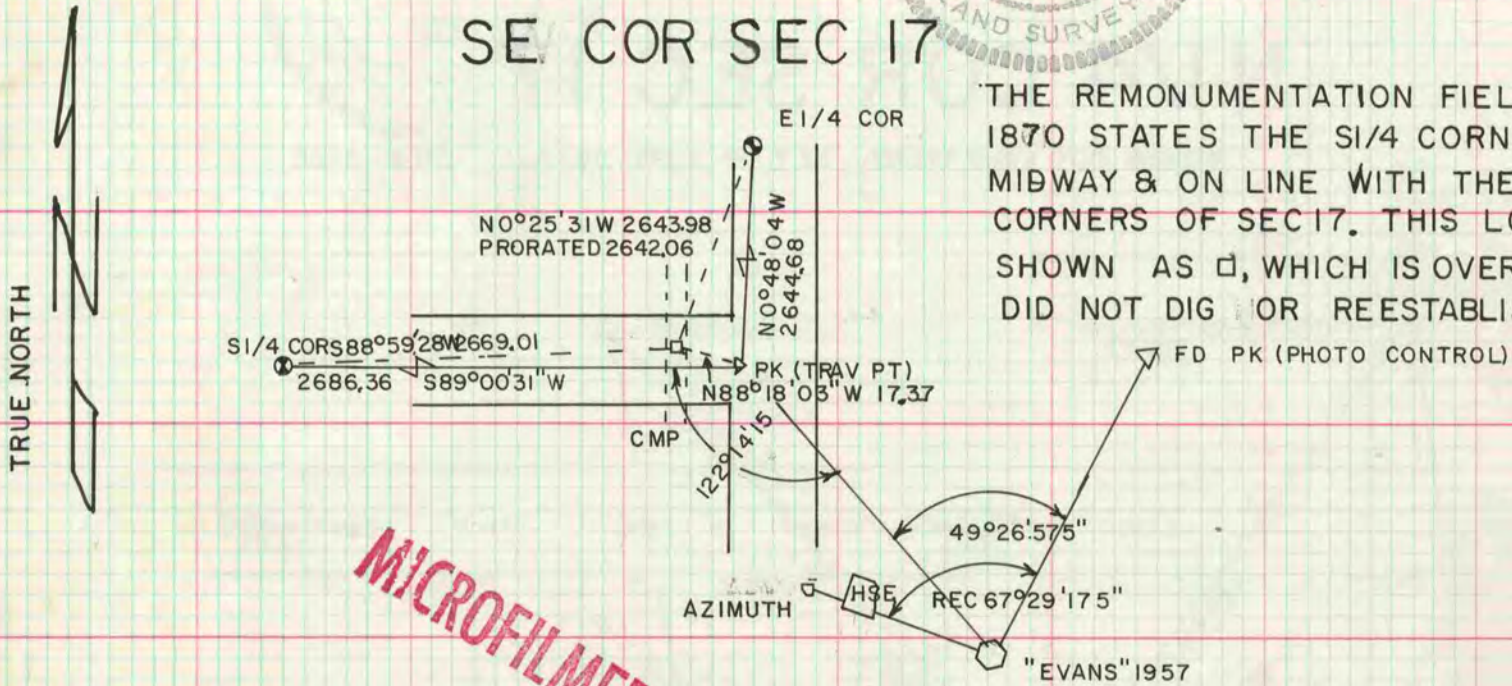
I hereby certify that the following is a correct record of said survey as made by me.

COUNTY BUILDING  
CITY OF JANESVILLE



## SE COR SEC 17

THE REMONUMENTATION FIELD NOTES OF 1870 STATES THE SE 1/4 CORNER WAS SET MIDWAY & ON LINE WITH THE SE & SW CORNERS OF SEC 17. THIS LOCATION IS SHOWN AS □, WHICH IS OVER A CMP. I DID NOT DIG OR REESTABLISH THE COR.

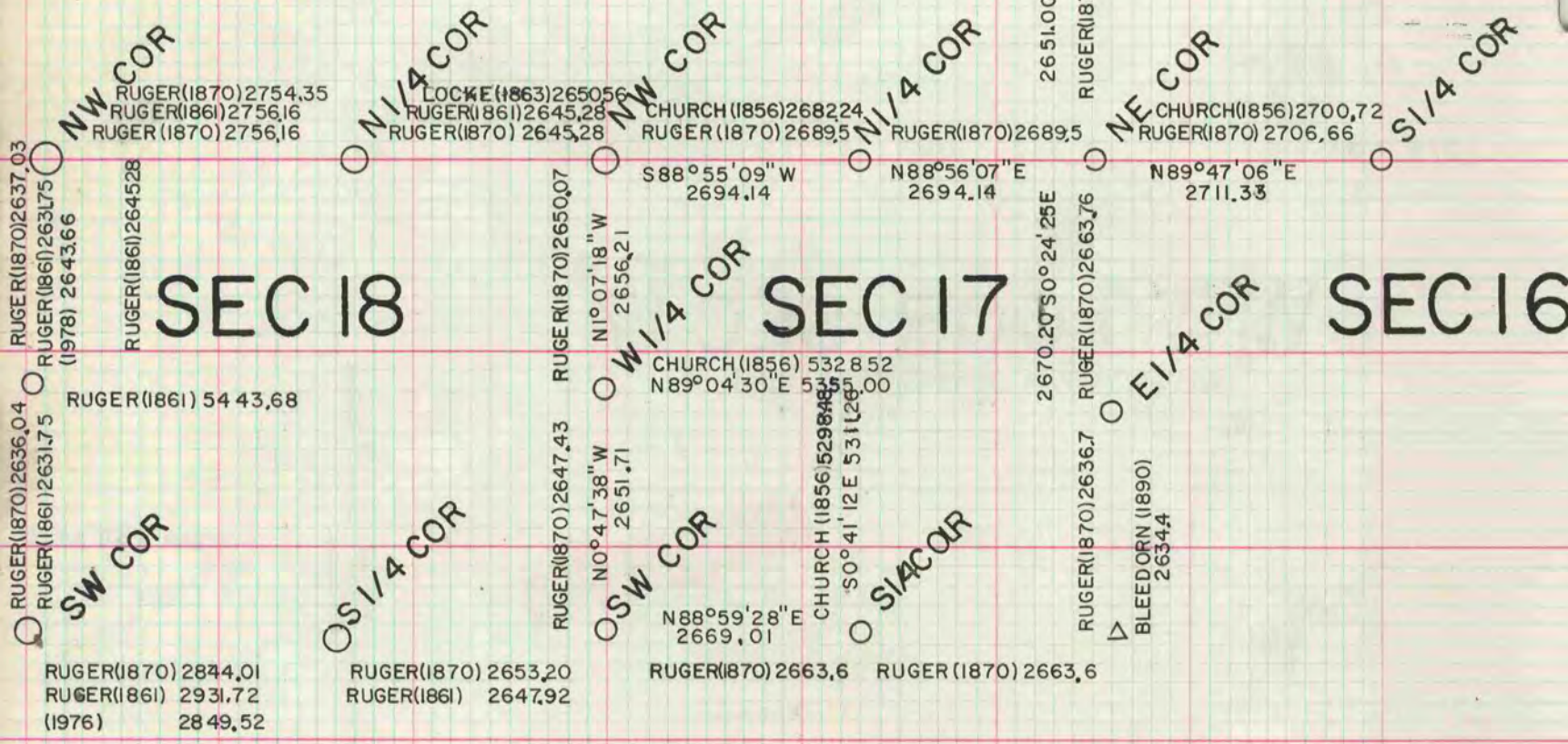


MICROFILMED

## SEC 7

## SEC 8

## WI/4 COR



## SEC 19

## SEC 20

H. LEE (1971) 2647.61  
RUGER (1870) 2642.15  
WI/4 COR