

PLAT AND RECORD

533

VOL. 5

Of a Survey on Section 36 T 1 R 13 E. of the 4 P. M. in TURTLE Township

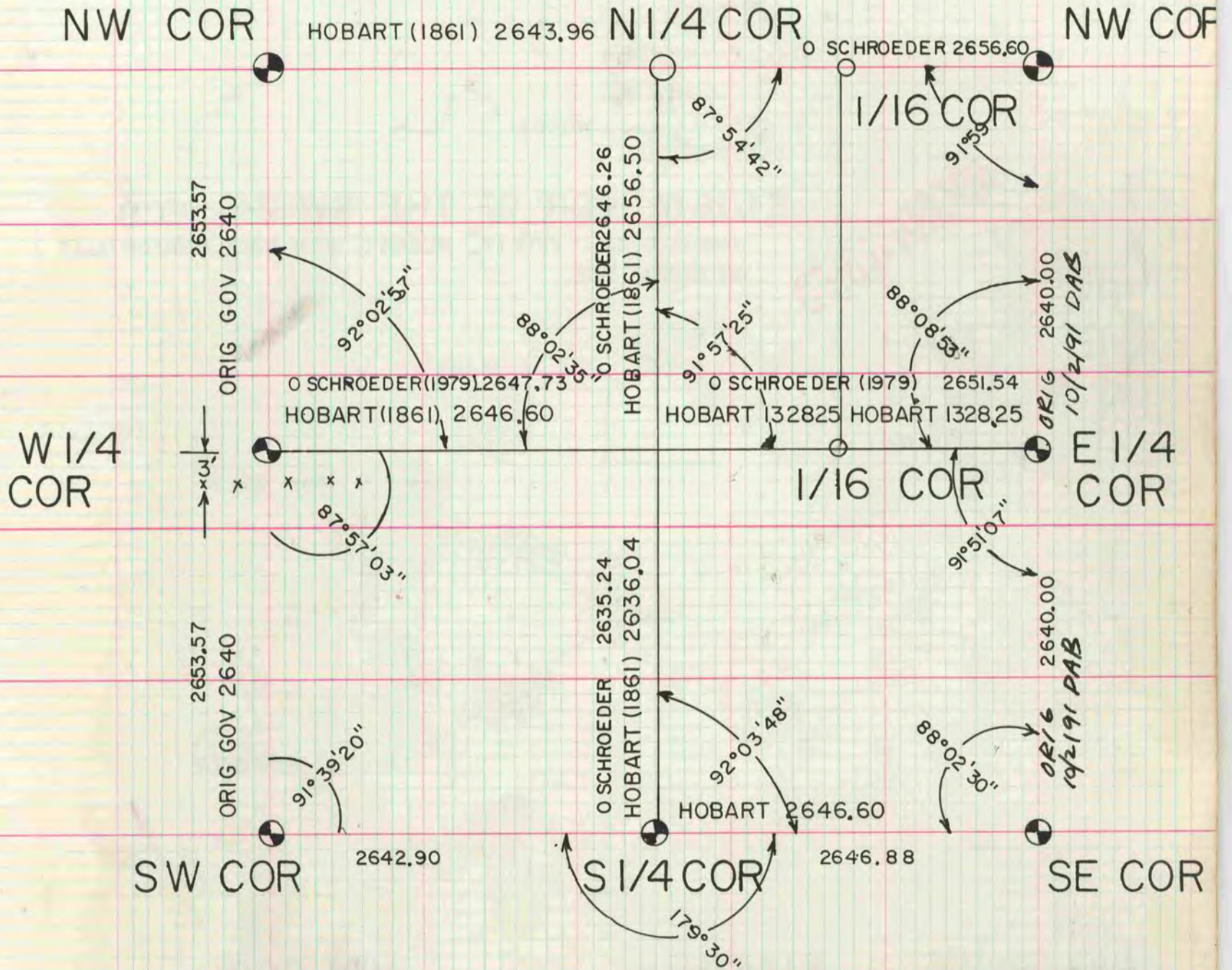
Rock County, Wisconsin, made MAY the 5 19 79

I hereby certify that the following is a correct record of said survey, as made by me.

COUNTY BUILDING
CITY OF JANESVILLE



MICROFILMED



W 1/4 CORNER OF SEC 36 - SET ALUM MON ON LINE WITH THE NW & SW COR AT SINGLE PROPORTIONATE DISTANCE.