

PLAT AND RECORD

COUNTY BUILDING  
CITY OF JANESVILLE

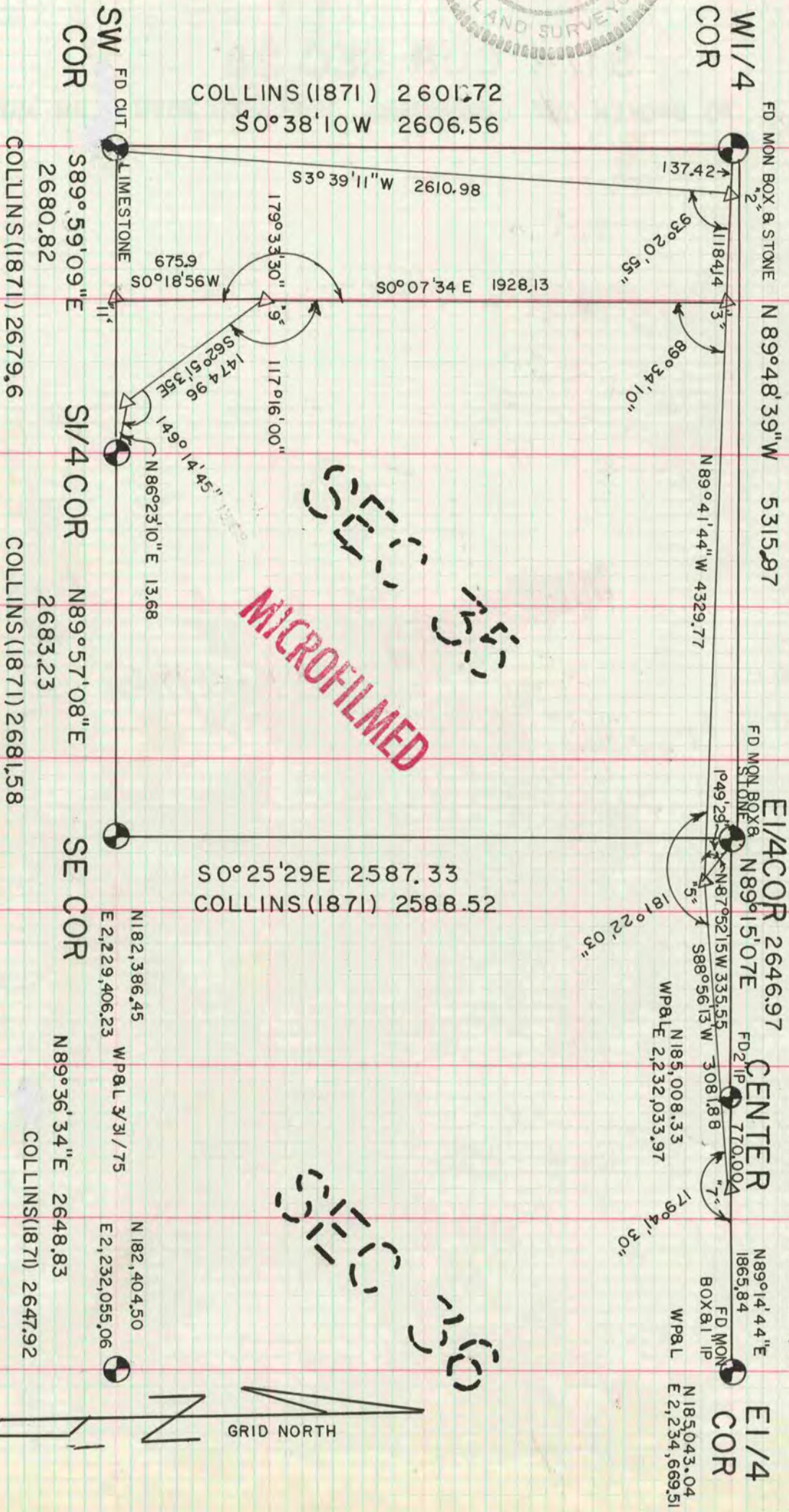
Of a Survey on Section 35, 36 T 1 R 11 E. of the 4 P. M. in **NEWARK** Township  
Rock County, Wisconsin, made **MAY** the **21** 1979

I hereby certify that the following is a correct record of said survey as made by me.

*Donald Barnes*  
-1216  
JANESVILLE  
WI.

County Surveyor.

BEARINGS ARE REFERENCE TO GRID NORTH.  
DISTANCES ARE GROUND DISTANCES.



TRAVERSE STA REMARKS  
PK 1 RD & ON LINE WITH THE W 1/4 COR, SEC 35 & TRAV "S"  
PK 2 RD & ON LINE WITH FENCE TO THE EAST & WEST  
PK 3 EDGE OF PAVEMENT  
PK 4 RD & ON LINE WITH CENTER & E 1/4 COR SEC 36

COMBINED SCALE FACTOR 1.00002118  
LONG 89°08' +0°35'43.76" ≈ 0