

PLAT AND RECORD

COUNTY BUILDING
CITY OF JANESVILLE

539
VOL 5

Of a Survey on Section 33 T. 1 R. 13 E. of the 4 P. M. in TURTLE Township
Rock County, Wisconsin, made MAY the 23 1979

I hereby certify that the following is a correct record of said survey as made by me.



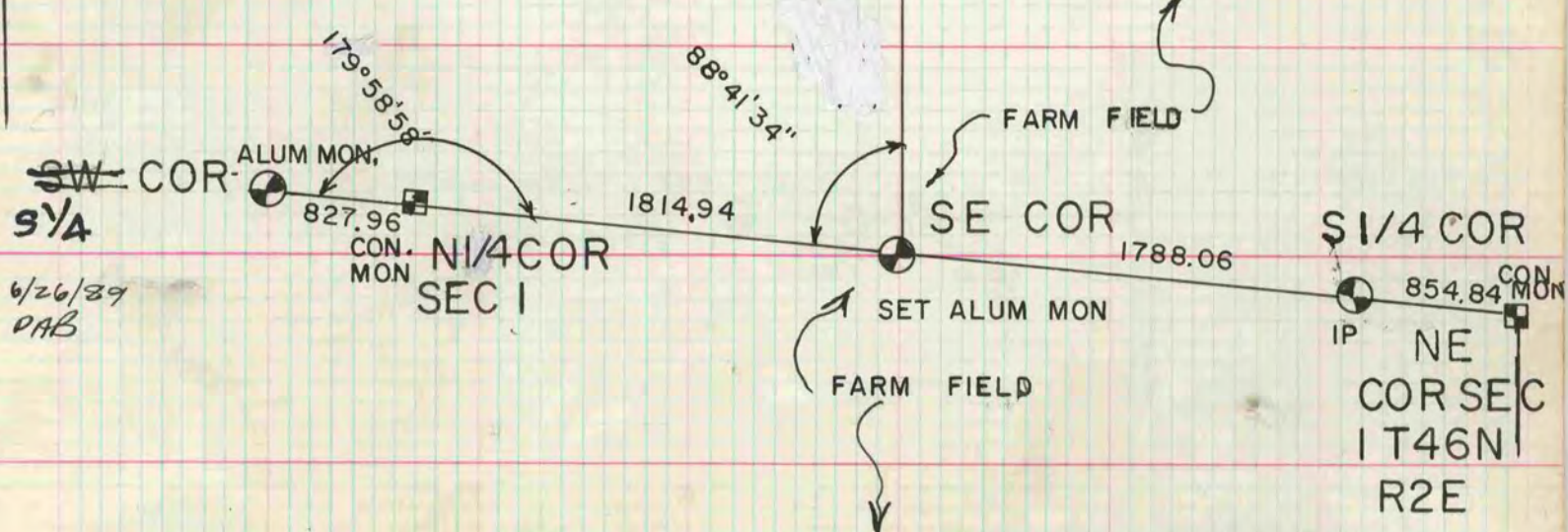
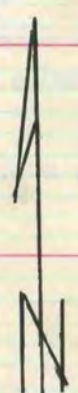
E 1/4 COR FENCES & CORNER WERE DESTROYED.
SET ALUM MON 15" DEEP ON LINE WITH
NE & SE CORNERS AT SINGLE SINGLE
PROPORTIONATE DISTANCE

SE COR FENCE & CORNER WERE DESTROYED.
SET ALUM MON 15" DEEP ON LINE WITH
THE N 1/4 & NE CORNERS OF SEC 1
T46N R2E AT SINGLE PROPORTIONATE
DISTANCE BETWEEN THE S 1/4 CORNER
OF SEC 33 & THE S 1/4 CORNER OF SEC 34

NE COR
FD 2" IP

E 1/4 COR
SET ALUM MON

Sec 33
MICROFILMED



Sec 34

6/26/39
DAB