

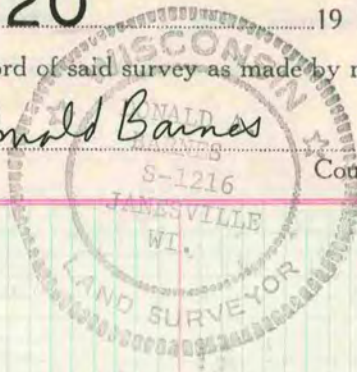
Of a Survey on Section 14 15 22 23 27 26 R 10 E. of the 4 P. M. in SPRING VALLEY Township Rock County, Wisconsin, made JUNE 20 19 79

I hereby certify that the following is a correct record of said survey as made by me.

Donald Barnes

County Surveyor.

COUNTY BUILDING CITY OF JANESVILLE



15

14

E 1/4 COR

ORIG. GOV. 2640 N 2-09-22 W 2666.64

SET ALUM. MON. FROM TIES

N 89-21-19 E 1286.38

SW COR

RUGER 1876 1287.49 LOCKE 1866-1286.34 J. CHURCH 1857 1300.20

2650.88 N 89-32-43 E

ORIG. GOV. 2636.04

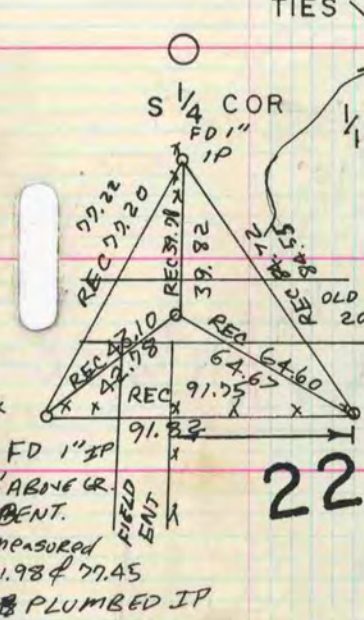
SET ALUM. MON. FROM TIES

N 1/4 COR

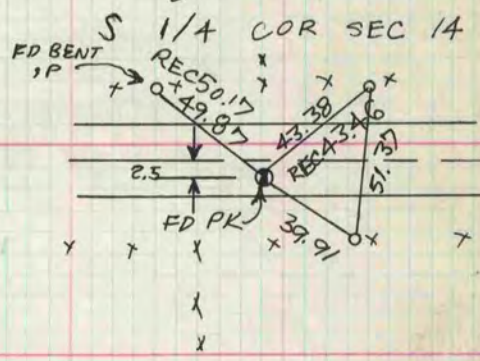
NE COR

REPLACED IP WITH ALUM. MON.

FD 1 1/4" GAS PIPE 0.7 DEEP  
O LARGE HH ON N 1/4 S/E/W



22



23

MICROFILMED

N 1-52-11 W 2666.64

1/4 COR

N-2-25-08 W 2666.64

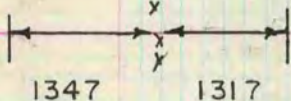
2663.99

N 89-09-08 E

2663.99

N 89-09-09 E

NW orig. gov. 2638.02 NE orig. gov. 2638.02



27

ORIG. GOV. 2607.66

N 89-59-15 E 2633.26

N 1/4 COR

N 89-48-36 E 2608.16

ORIG. GOV. 2608.32

N 0-49-49 W 2666.64

E 1/4 COR

26

E 1/4 COR SEC 26

IFD. REMAINS OF OLD STAKE  
O 4 H.H.'s; REPLACED IT  
WITH ALUM. MON.

