

PLAT AND RECORD

COUNTY BUILDING
CITY OF JANESVILLE

VOL. 5

551

Of a Survey on Section **22, 27** T. **2** R. **10** E. of the 4 P. M. in **SPRING VALLEY** Township

Rock County, Wisconsin, made **JULY** the **3** 19 **79**

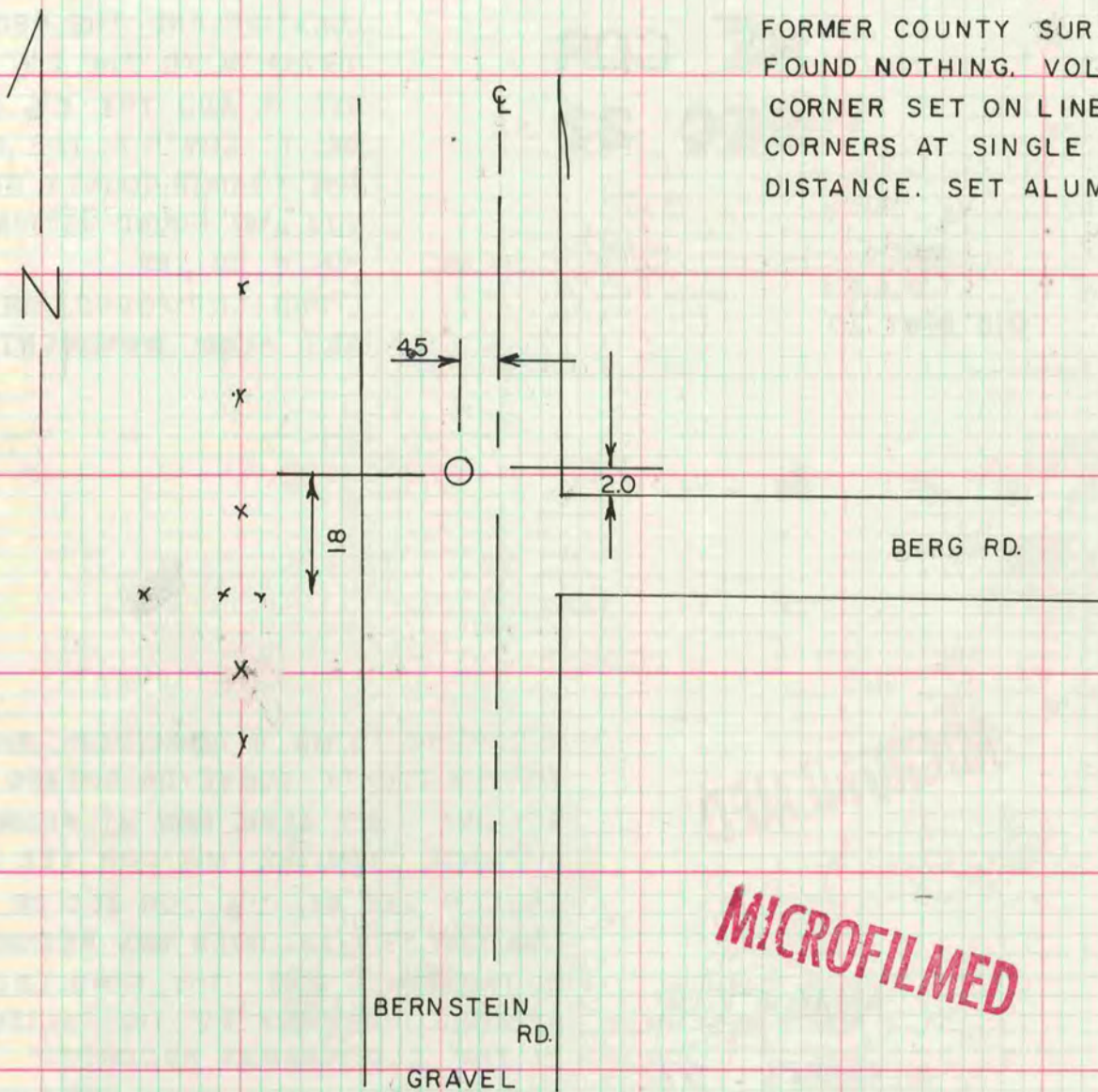
I hereby certify that the following is a correct record of said survey as made by me.



County Surveyor.

N 1/4 COR SEC 27

FORMER COUNTY SURVEYOR DUG AND FOUND NOTHING. VOL 4 PG 595.
CORNER SET ON LINE WITH NE & NW CORNERS AT SINGLE PROPORTIONATE DISTANCE. SET ALUM. MON. 1.0 DEEP.



MICROFILMED

E 1/4 COR SEC 22

DUG AND FOUND NOTHING
USED OCCUPATION TO ESTABLISH CORNER
THE PROPORTIONATE DISTANCE WAS IN
HARMONY WITH OCCUPATION
SET ALUM. MON. 0.5 ABOVE GROUND

