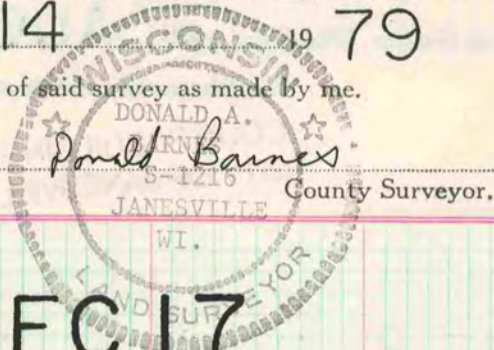


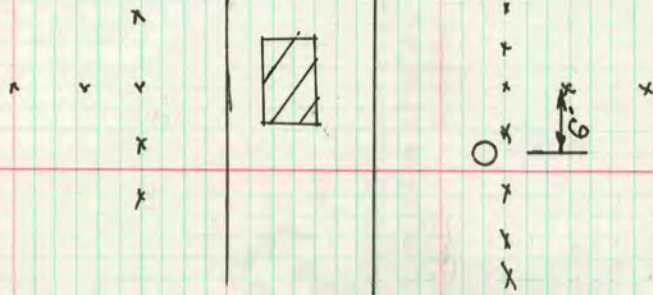
Of a Survey on Section 17 T. 3 R. 11 E. of the 4 P. M. in CENTER Township
Rock County, Wisconsin, made AUGUST the 14 1979

I hereby certify that the following is a correct record of said survey as made by me.



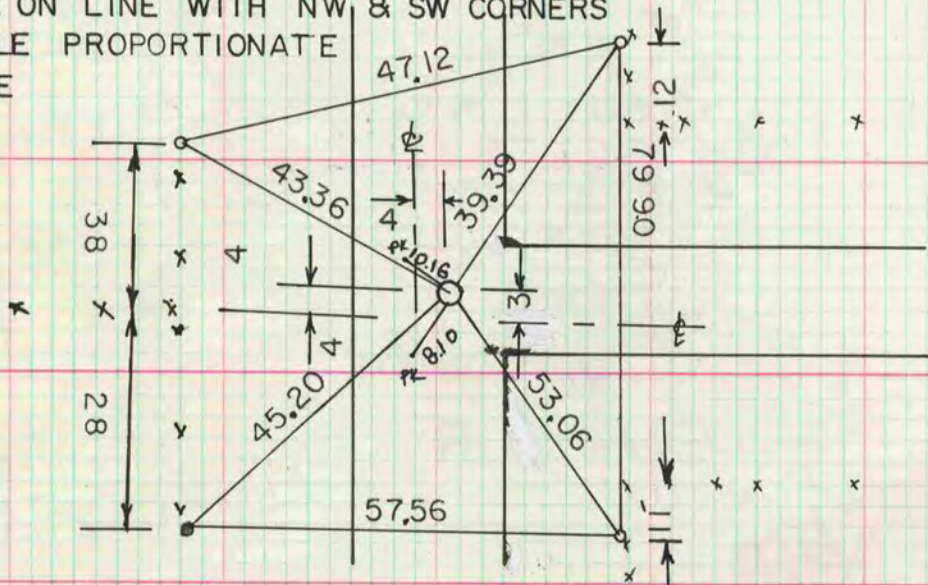
S 1/4 COR SEC 17

FORMER COUNTY SURVEYOR DUG & FOUND NOTHING SET C.I. MON
ON LINE WITH SW & SE COR AT SINGLE PROPORTIONATE DISTANCE



W 1/4 COR SEC 17

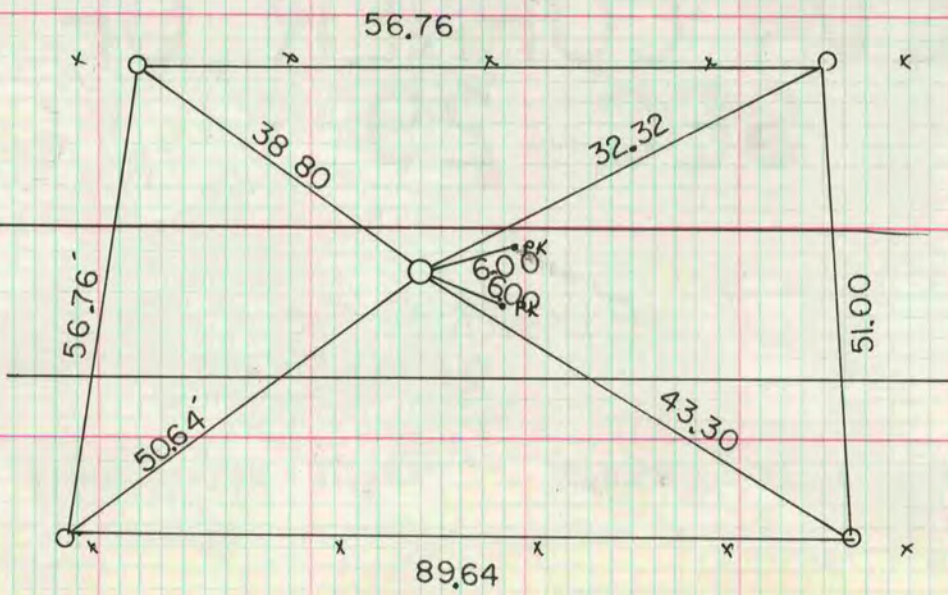
SET COR ON LINE WITH NW & SW CORNERS
AT SINGLE PROPORTIONATE DISTANCE



- 1 1/4" X 24" IP
- IRON BOLT

MICROFILMED

S 1/16th COR OF THE NW 1/4 DUG & FD 13 X 13 X 8 HH SEC 17



- 1 1/4" X 24" IP
-