

PLAT AND RECORD

569

VOL. 5

COUNTY BUILDING
CITY OF JANESVILLE

Of a Survey on Section 17 T 3 R 11 E. of the 4 P. M. in CENTER Township

Rock County, Wisconsin, made AUGUST the 14 1979

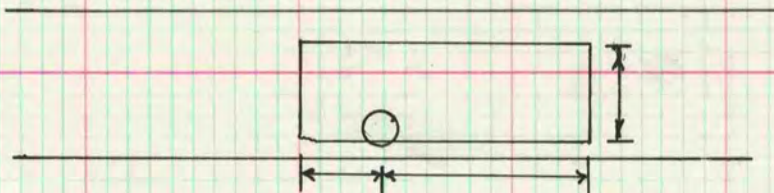
I hereby certify that the following is a correct record of said survey as made by me.

Donald Barnes

DONALD A. BARNES
S-1216 County Surveyor,
JANESVILLE
WI.

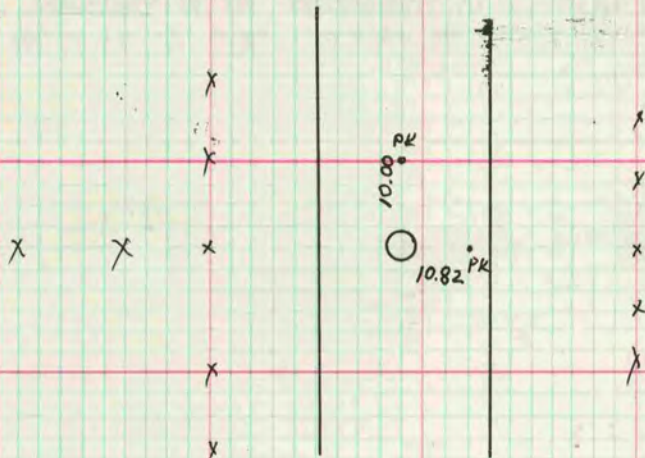
E 1/4 COR SEC 17

FORMER SURVEYOR DUG & FOUND NOTHING. SET
ALUM MON ON LINE WITH NE & SE COR AT
SINGLE PROPORTIONATE DISTANCE



N 1/4 COR SEC 17

DUG & FD 12X6X6 H.H.O. 5' BELOW THE OLD RD BED



MICROFILMED

CENTER OF SEC 17

DUG & FD NOTHING. SET ALUM MON AT THE INT OF THE N-S 1/4
LINE & THE LINE BETWEEN THE E 1/4 COR & THE S 1/16th COR OF THE
NW 1/4 OF SEC 17

