

598

14 VOL. 6

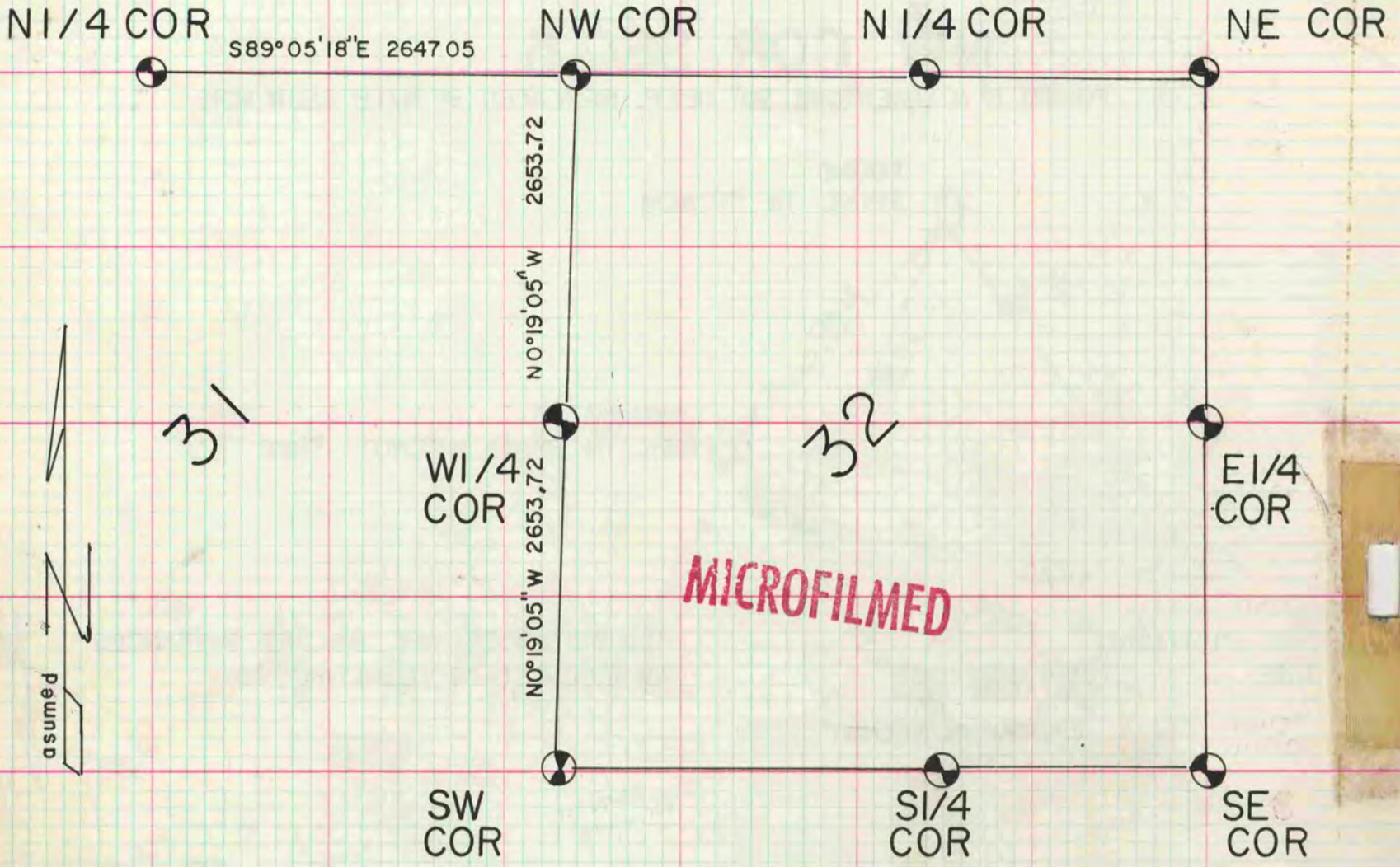
# PLAT AND RECORD

Of a Survey on Section 31, 32 T 1 R 13 E. of the 4 P. M. in **TURTLE** Township

Rock County, Wisconsin, made **DEC** the **13** 19**79**

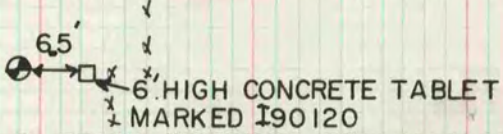
I hereby certify that the following is a correct record of said survey as made by me.

COUNTY BUILDING  
CITY OF JANESVILLE

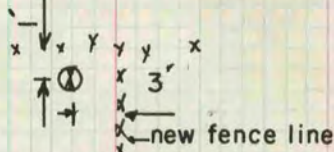


SW COR FD 1 1/2" I.P., REPLACED WITH ALUM MON.

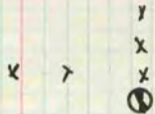
I90



W1/4 COR DUG & FOUND NOTHING. SET ALUM MON ON LINE WITH SW & NW COR OF SEC 32 AT SINGLE PROPORTIONATE DISTANCE.



E1/4 COR FD AXLE. DROVE AXLE DEEP & SET ALUM MON.



A TRAVERSE WAS PROVIDED BY THE RH BATTERMAN CO. THE W1/4 CORNER WAS SET USING THE TRAVERSE STATIONS AND DATA