

PLAT AND RECORD

VOL. 25

Of a Survey on Section 13, 14, 24, 4 R. 13 E. of the 4 P. M. in MILTON Township

Rock County, Wisconsin, made APRIL 21 1980

COUNTY BUILDING CITY OF JANESVILLE

I hereby certify that the following is a correct record of said survey as made by me.



County Surveyor.

(ORIG. GOV. 2640' (RUGER 2633.4 VAR 6°27' NO°09'43"W 2635.54'

1/4 FOUND CUT LIMESTONE

SEC 13

(ORIG. GOV. 2666.4' (RUGER 2685.54' VAR. 3°46') (ORIG. GOV. 2653.2' (RUGER 2648.42' VAR. 6°26') (ORIG. GOV. 2653.2' (RUGER 2648.58' VAR. 5°45') S88°17'47"E 2685.29' N89°16'02"E 2650.53' S89°59'59"E 2650.69'

SI/4 FOUND ALUM. MON. I/16 FOUND IRON PIN SW FOUND STONE & IRON PIPE SE FOUND ALUM. MON. SE FOUND CUT LIMESTONE

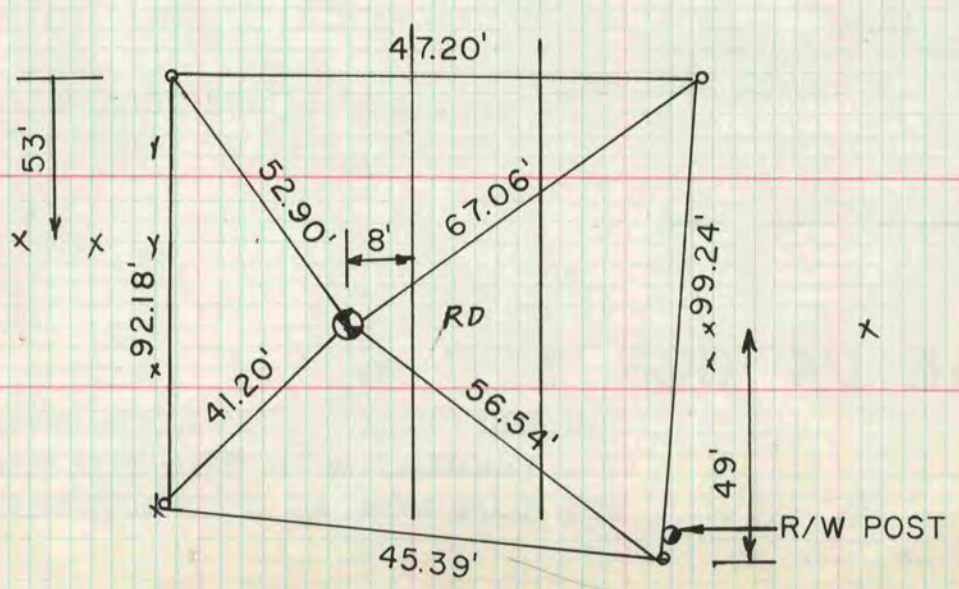
W 1/4 COR FOUND CUT LIMESTONE 0.5' ABOVE GROUND IN N/S FENCE ROW E 1/4 COR FOUND CUT LIMESTONE AT FENCE INTERSECTION OF SEC 24

ASSUMED

S 1/4 COR SEC 13

DUG AND FOUND NOTHING, SET ALUM. MON. AT SINGLE PROPORTIONATE DISTANCE WITH RUGER'S REMONUMENTATION DISTANCES AND ON LINE WITH FENCE TO THE EAST.

MICROFILMED



o IRON BOLTS