

VOL. 6 PLAT AND RECORD

Of a Survey on Section 6 T 4 R 14 E. of the 4 P. M. in LIMA Township
Rock County, Wisconsin, made MAY the _____

I hereby certify that the following is a correct record of said survey as made by _____

COUNTY BUILDING
CITY OF JANESVILLE



S 1/4 SEC 6

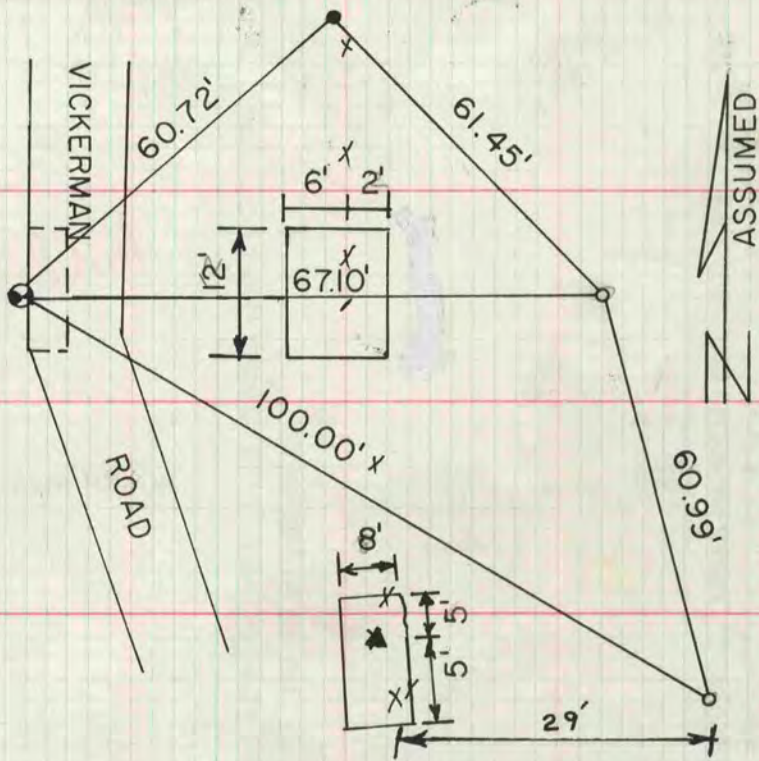
DUG AT ROAD INT. & FENCE INT. PRORATION AND FENCE INT. AND PRORATION ON STRAIGHT LINE BETWEEN SE & SW CORNERS AND FOUND NOTHING. C.T.H.

"N" WAS RELOCATED BY PROJECT S1051(I) SEPT. 29, 1966. HWY. PLANS SHOW OLD HWY. "N". THE OLD LOCATION, WARRANTY DEEDS BOOK E PAGE 149, BOOK 91 PAGE 38, BOOK 94 PAGE 506, AND OCCUPATION ARE IN HARMONY WITH EACH OTHER. USED THIS INFORMATION TO SET THE CORNER.

- 3/8"x32" BOLT
- 1"x24" IRON PIPE

SET ALUM. MON.

254'
REC. 254.1'



MICROFILMED

E 1/16 COR OF THE NW 1/4 SEC 6

FOUND HARDHEAD 6"x10" POINT UP SURROUNDED BY 3 HARDHEADS 0.5' ABOVE GROUND. COULD NOT FIND A RECORD OF THE STONE. IT IS ON LINE WITH N 1/4 COR. & S 1/4 COR. IT IS APPROXIMATELY 20' IN ERROR IN N/S DIRECTION, 1673.33' S0°21'11"E OF N 1/4 COR. I AM NOT CLAIMING THIS AS THE 1/16 COR. BUT ONLY NOTING THE STONE FOR INFORMATION SAKE.

