

PLAT AND RECORD

Of a Survey on Section 3, 4 T 2 R 12 E. of the 4 P. M. in ROCK COUNTY Township

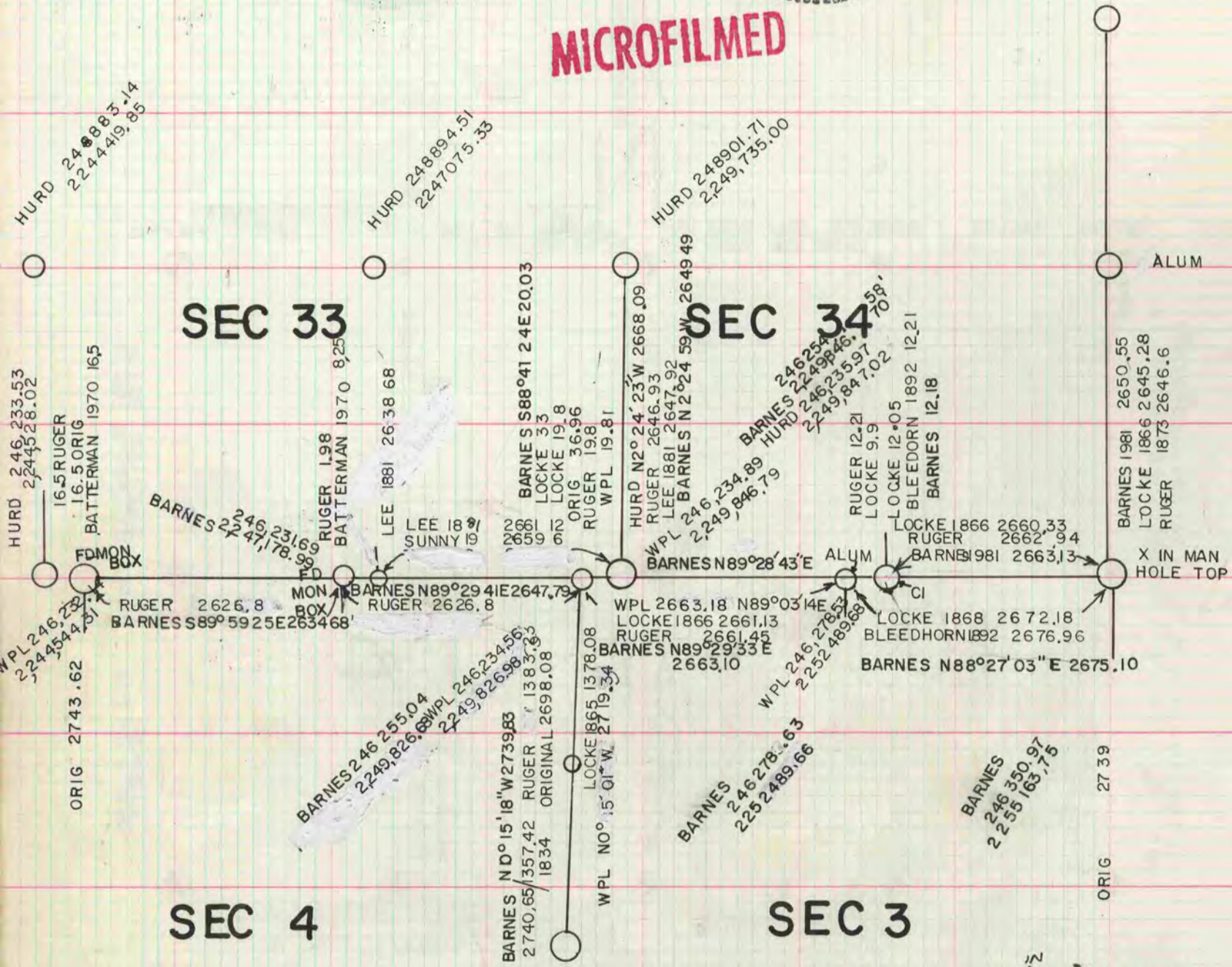
Rock County, Wisconsin, made AUGUST 14 1881 the

I hereby certify that the following is a correct record of said survey made by me.

COUNTY BUILDING CITY OF JANESVILLE



MICROFILMED



THE DISTANCES & ANGLES SHOWN IN THE DRAWING BELOW WERE COMPUTED FROM THE ACTUAL FIELD TRAVERSE.

THE DISTANCES SHOWN AS "BARNES" IN THE DRAWING ABOVE WERE COMPUTED FROM THE WI POWER & LIGHT RECORD COORDINATES AND COORDINATES DERIVED FROM THE COORDINATE TRANSFORMATION PROGRAM USED IN THE 1980 CLINTON PROJECT. WI POWER & LIGHT COORDINATE VALUES FOR THE NW COR SEC 4, THE 2" IP NEAR THE SE COR SEC 33, AND THE N 1/4 COR SEC 3 WERE USED IN THE TRANSFORMATION PROGRAM.

