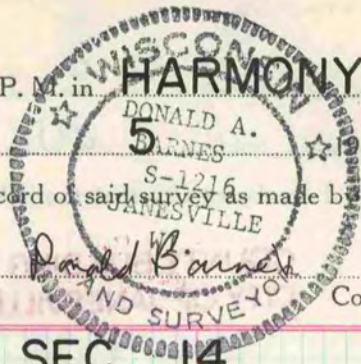


PLAT AND RECORD

Of a Survey on Section 14 T 3 R 13 E. of the 4 P. M. in HARMONY Township  
Rock County, Wisconsin, made AUG. 5 1981

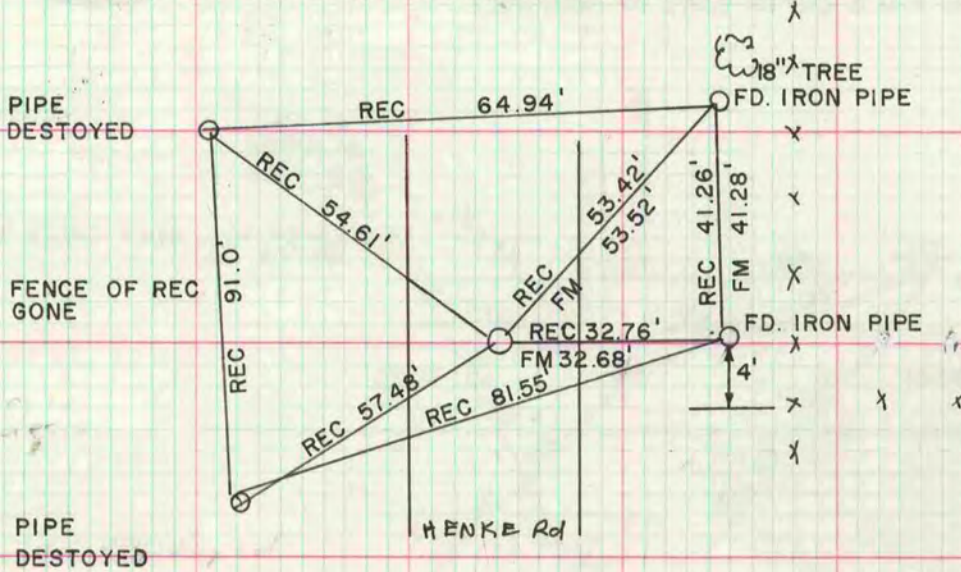
I hereby certify that the following is a correct record of said survey as made by me.

COUNTY BUILDING  
CITY OF JANESVILLE



SW COR SEC 14

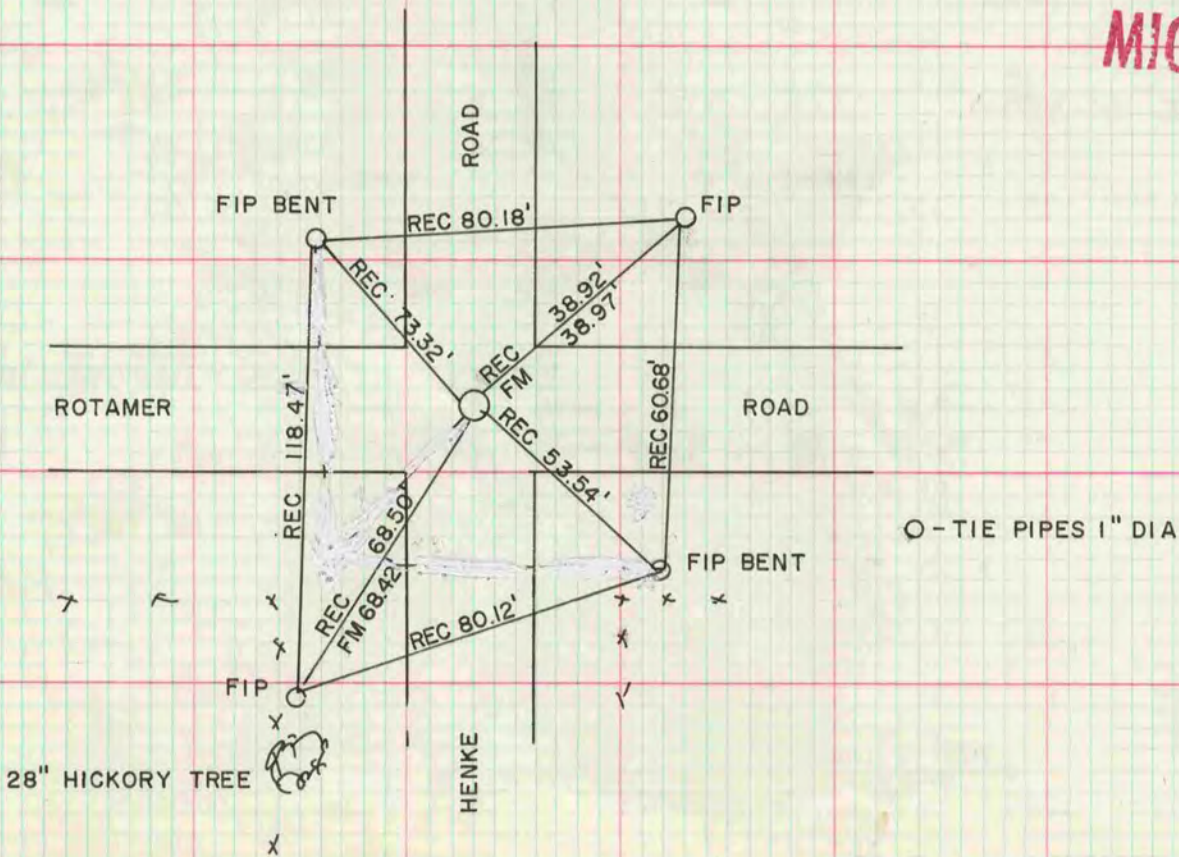
FOUND CUT LIMESTONE MONUMENT UPRIGHT BUT SPLIT. SET ALUM. MON.



O - TIE PIPES 1" DIA

NW COR SEC 14

FOUND 1" IRON PIPE WITH CAP. SET ALUM. MON.



O - TIE PIPES 1" DIA

MICROFILMED