

PLAT AND RECORD

197

VOL. 6

Of a Survey on Section **14** T **3** R **13** E. of the 4 P. M. in **HARMONY** Township
Rock County, Wisconsin, made **AUGUST** the **26** 19**81**

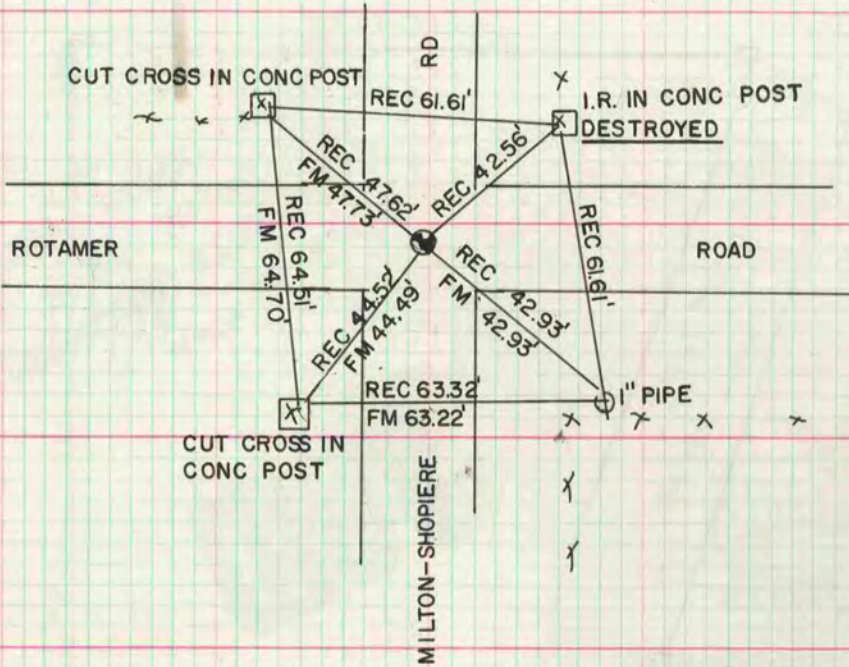
I hereby certify that the following is a correct record of said survey as made by me.
COUNTY BUILDING
CITY OF JANESVILLE

Donald A. Barnes
DONALD A. BARNES
S-1216
JANESVILLE
WI.
County Surveyor.



NE COR SEC 14

FD I.P.—1.5" DIA.—0.1' DEEP SET ALUM MON ON TOP
L.S. FD BELOW I.P.



E 1/4 COR SEC 14

FD CUT L.S. 1.5' DEEP WITH LETTER "S" MARKED ON TOP; INSCRIBED
DIAGONAL LINES ON TOP; DRILLED HOLE AND SET ALUM SPIKE MON

