

# PLAT AND RECORD

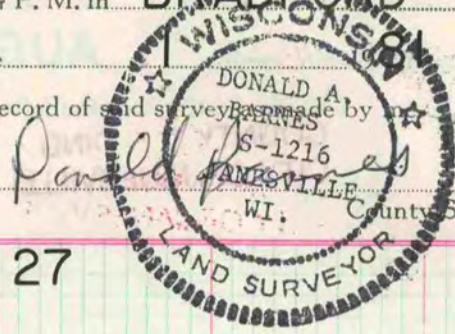
207

VOL. 6

Of a Survey on Section <sup>6,27</sup>28,33 T 2 R 14 E. of the 4 P. M. in BRADFORD Township  
Rock County, Wisconsin, made OCT. the

I hereby certify that the following is a correct record of said survey made by

COUNTY BUILDING  
CITY OF JANESVILLE



## W1/4 COR SEC 27

FD CAST IRON MON  
SET CARSONITE post

## N1/4 COR SEC 6

DUG HOLE 2' DEEP FD LARGE IRREGULAR LS. STONE IS IN QUESTION BUT USED SINCE IT IS IN HARMONY WITH OCCUPATION & REC DISTANCES ALSO THE ONLY STONE SET  
CARSONITE POST SET CAST IRON MON



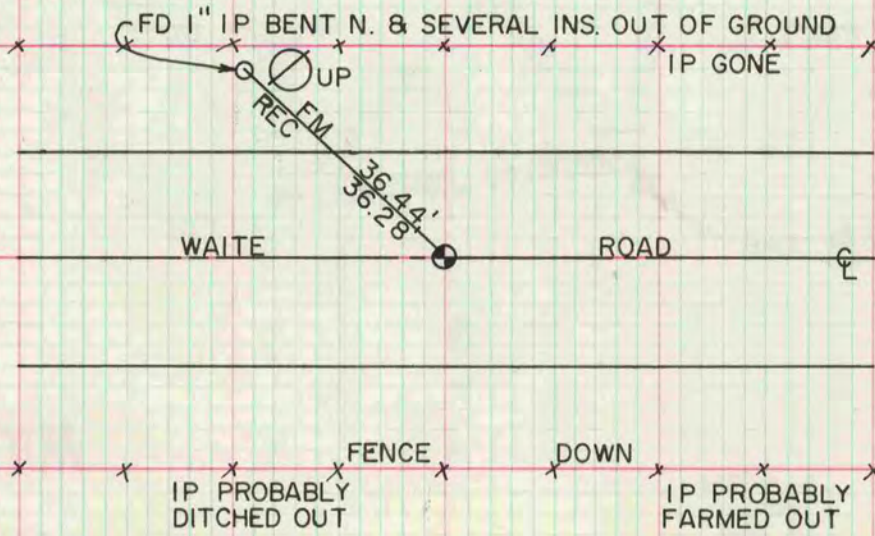
## SE COR SEC 28

FD SURVEYOR'S FLAGGING & 2 LARGE PIECE OF CUT LS & 2" X 10" IP. 32" DEEP FD BOTTOM OF CUT STONE SET ALUM MON ON STONE



## E1/4 COR SEC 33

FD R & R SPIKE OF REC ON PVMT SURFACE. 2 1/2' DEEP FD LARGE SOFT LS. BROKE TOP OF LS TO SET ALUMMON



MICROFILMED