

210
VOL. 6

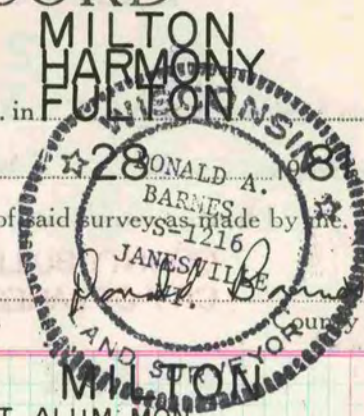
PLAT AND RECORD

Of a Survey on Section 35 T 4 R 12 E. of the 4 P. M. in FULTON Township

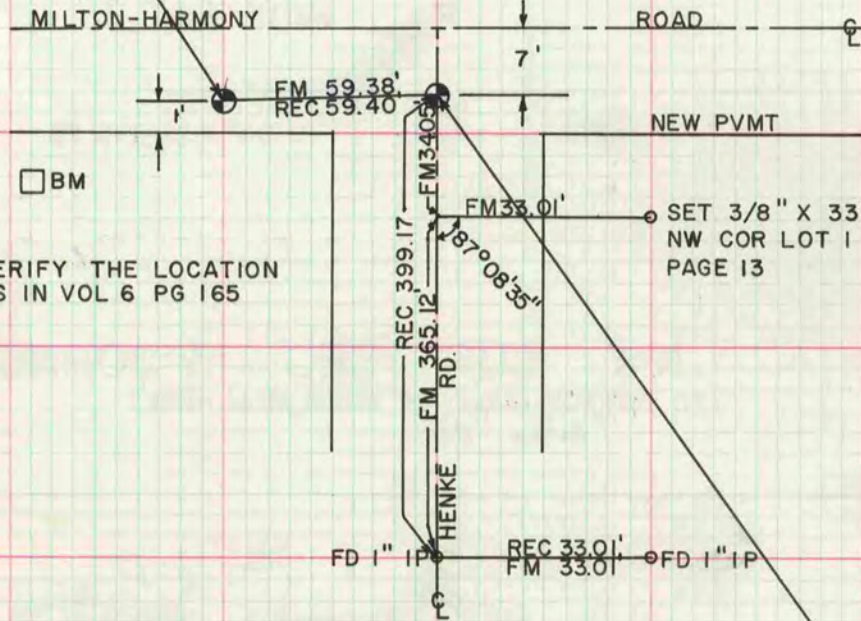
Rock County, Wisconsin, made SEPT the

I hereby certify that the following is a correct record of said surveys as made by me.

COUNTY BUILDING
CITY OF JANESVILLE



SW COR SEC 35
FD 36" DEEP IP IN OLD PVMT SET ALUM MON



NOTE: REC USED TO VERIFY THE LOCATION OF THESE CORS IN VOL 6 PG 165

NW COR SEC 2 HARMONY
40" DEEP FD REMAINS OF CAST IRON MON SET ALUM MON

E1/4 COR SEC 1 FULTON
FD PK NAIL & 24" DEEP FD CUT LS SET ALUM MON

BEACH FD PK 3.00' ROAD
 ● 300' FD PK

MICROFILMED