

PLAT AND RECORD

217

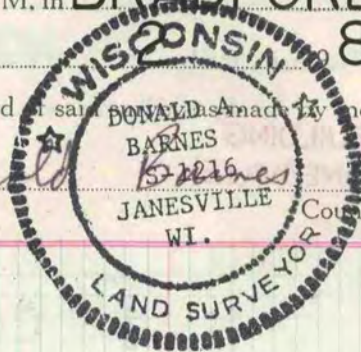
VOL. 6

Of a Survey on Section **28, 29** T. **2** R. **14** E. of the 4 P. M. in **BRADFORD** Township
Rock County, Wisconsin, made **NOV.** the **81**

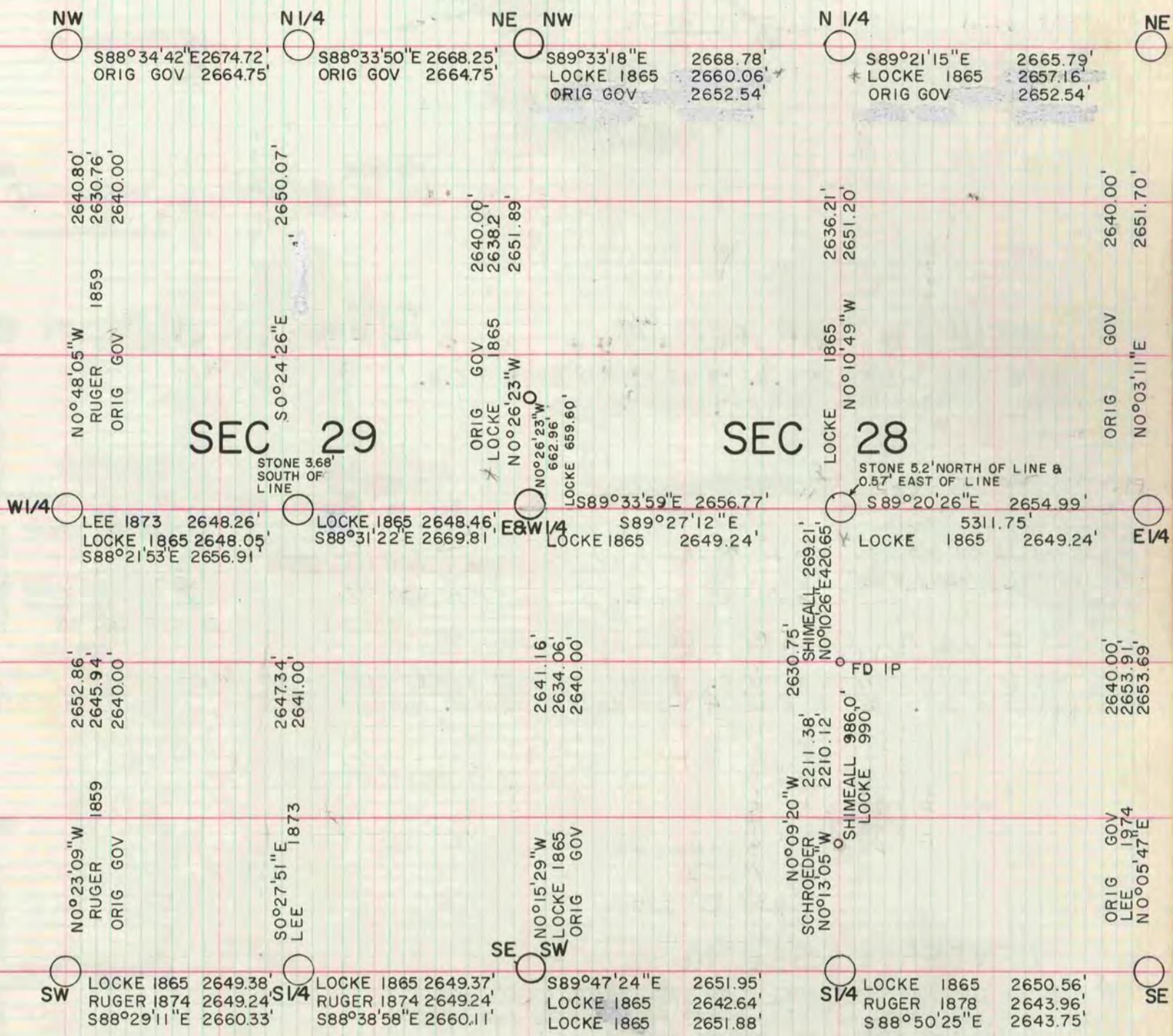
I hereby certify that the following is a correct record of said **DONALD Barnes** made by me.

**COUNTY BUILDING
CITY OF JANESVILLE**

Donald Barnes



THE REP. P. BARNARD COMPANY, ST. LOUIS



MICROFILMED