

PLAT AND RECORD

Of a Survey on Section 1, 13 T 3 R 14 E. of the 4 P. M. JOHNSTOWN Township
Rock County, Wisconsin, made DEC the 3 day of 1981

I hereby certify that the following is a correct record of said survey as made by me.

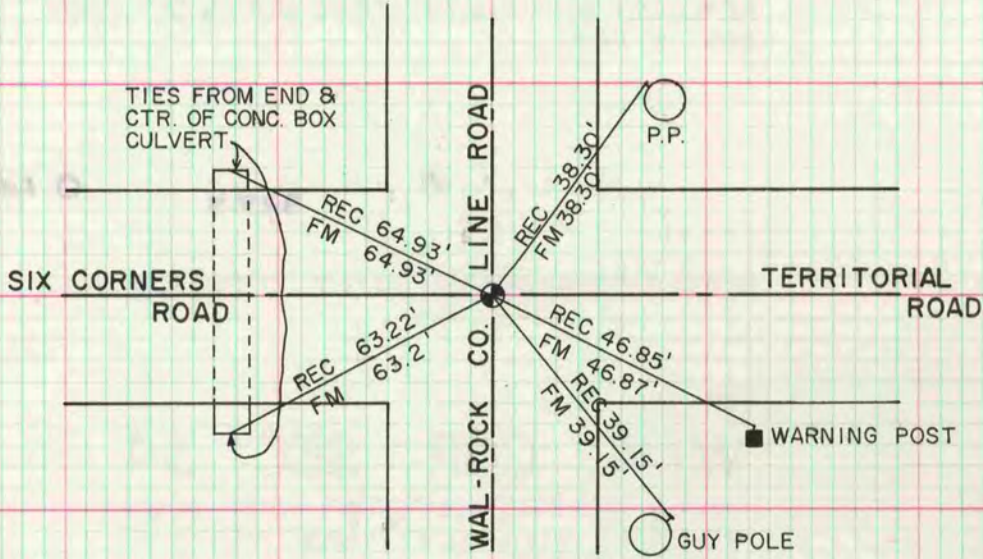
COUNTY BUILDING
CITY OF JANESVILLE

Donald A. Barnes



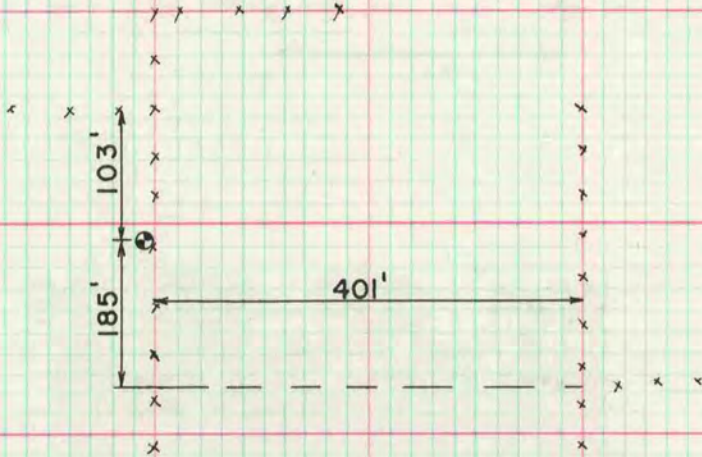
County Surveyor.

SE COR SEC 13
SET POLYSTYRENE MON FROM TIES - PAGE 119



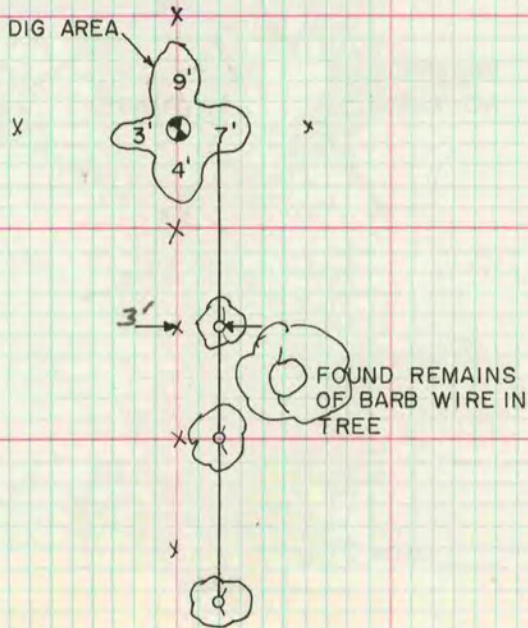
1/4 COR SEC 13

FOUND 1 1/2" x 36" IRON PIPE. REPLACED WITH POLYSTYRENE MON & SET CARSONITE POST.



1/4 COR SEC 13

DUG & FOUND NOTHING. OCCUPATION IS IN HARMONY WITH LOCKE'S SURVEY (VOL 1 PG 179). SET POLYSTYRENE MON & CARSONITE POST AT OCCUPATION.



MICROFILMED