

PLAT AND RECORD

239
VOL. 6

Of a Survey on Section 1 T 3N., R 13 E. of the 4 P. M. in HARMONY Township

Rock County, Wisconsin, made MARCH the 12 1982

I hereby certify that the following is a correct record of said survey as made by me.

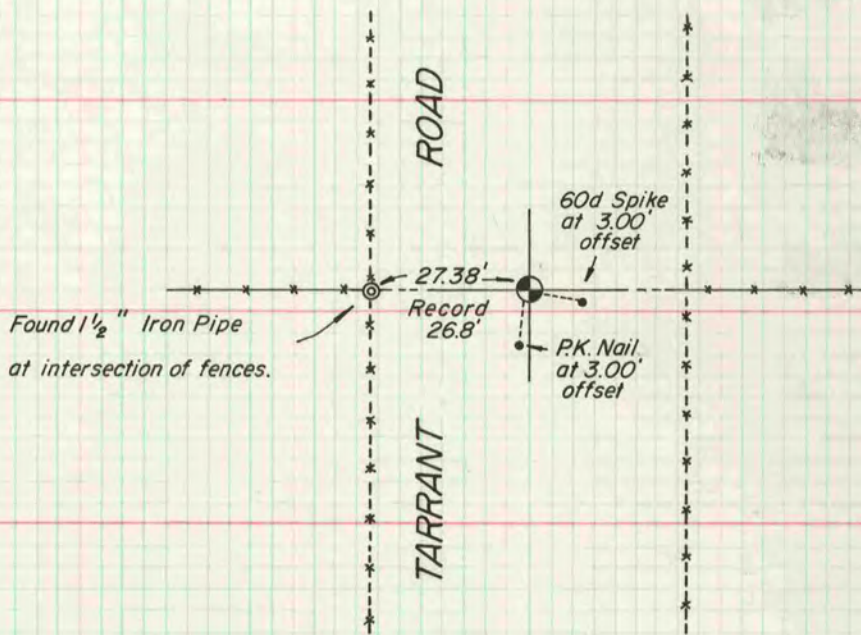
COUNTY BUILDING
CITY OF JANESVILLE



County Surveyor.

E. 1/4 CORNER-SECTION 1

MICROFILMED



Found Cut Stone 24" deep. Set C.I. Monument
on top of stone.