

PLAT AND RECORD

241
VOL. 6

Of a Survey on Section 22, 16 T. 4 R. 12 E. of the 4 P. M. in FULTON Township
Rock County, Wisconsin, made MAY the 3

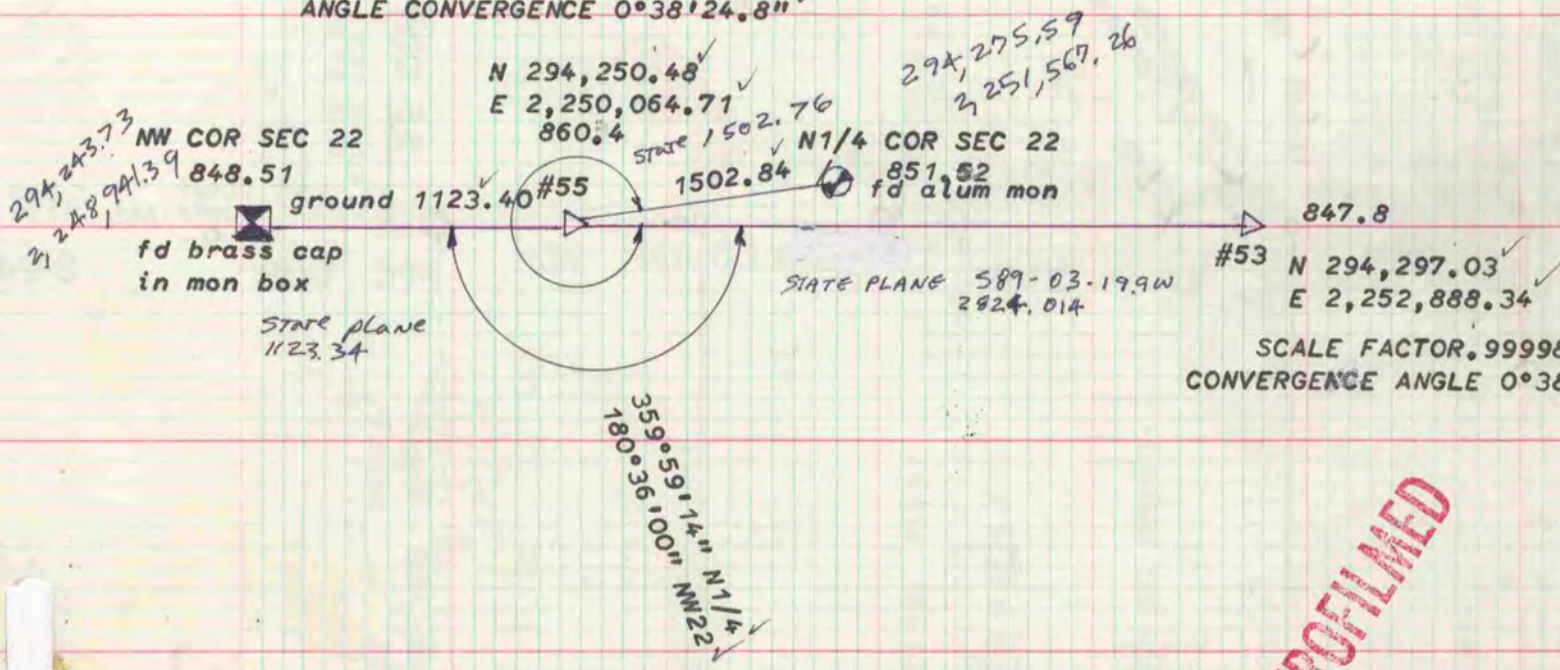
I hereby certify that the following is a correct record of said survey as made by me.

COUNTY BUILDING
CITY OF JANESVILLE



TRAVERSE POINTS WERE ESTABLISHED BY AERO-METRIC ENGINEERING FOR A PROJECT. ANGLES AND DISTANCES TO SECTION CORNERS WERE MEASURED BY ME.

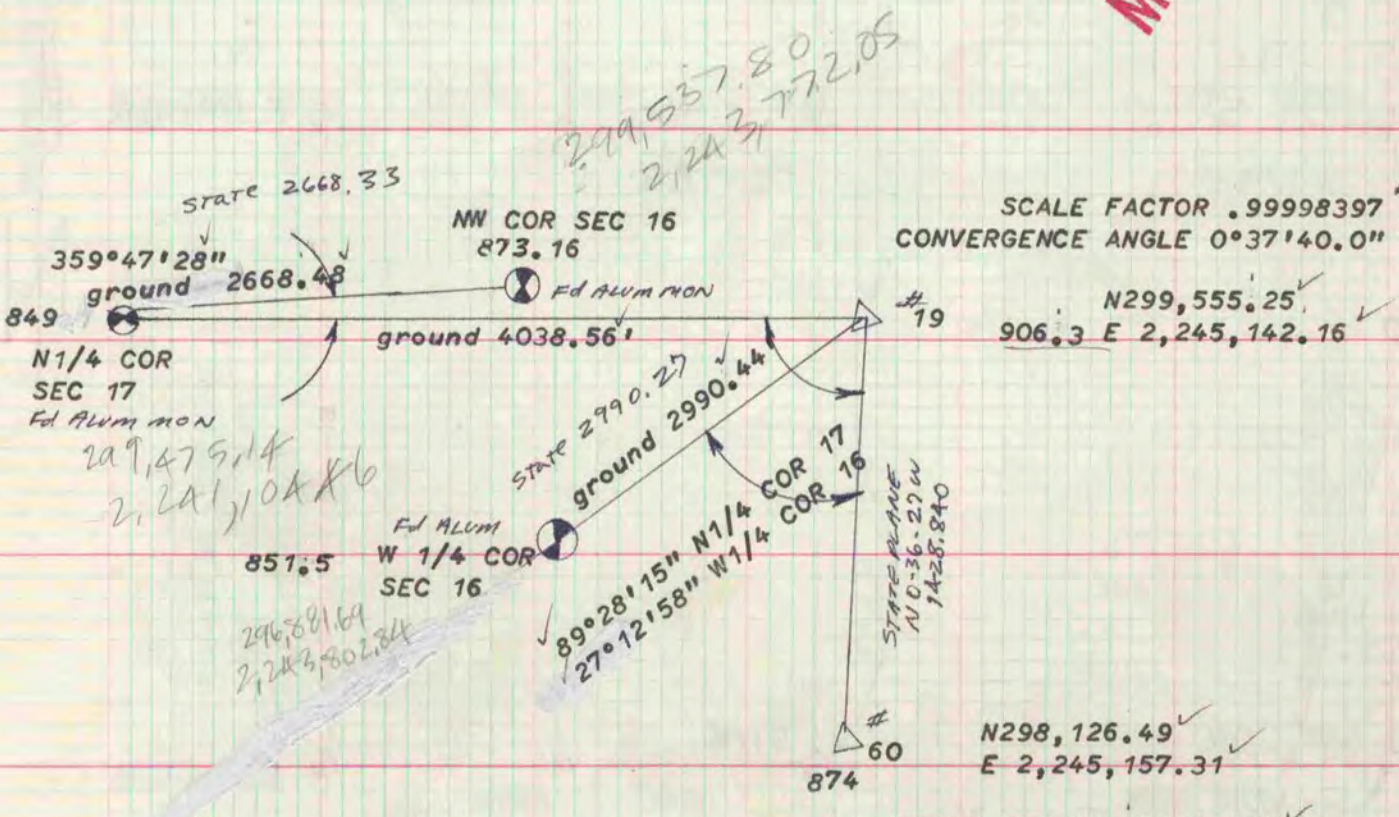
SCALE FACTOR .99998659
ANGLE CONVERGENCE 0°38'24.8"



SCALE FACTOR .99998658
CONVERGENCE ANGLE 0°38'50.9"

MICROFILMED

SCALE FACTOR .99998397
CONVERGENCE ANGLE 0°37'40.0"



SCALE FACTOR .99998466
CONVERGENCE ANGLE 0°37'40.0"