

PLAT AND RECORD

247
VOL. 6

Of a Survey on Section 1, 2, T 4N., R 14 E. of the 4 P. M. in LIMA Township

Rock County, Wisconsin, made April the 22

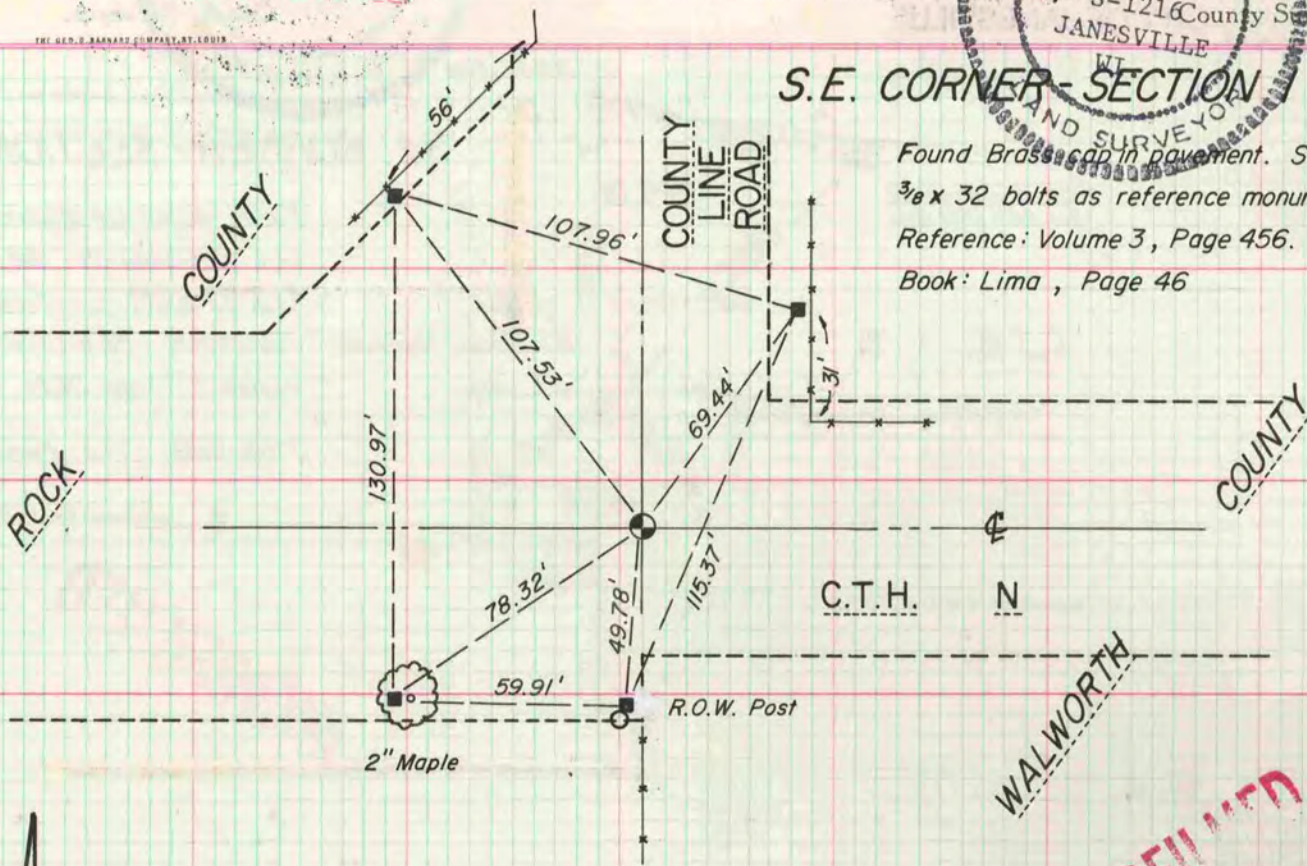
COUNTY BUILDING
CITY OF JANESVILLE

I hereby certify that the following is a correct record of said survey as made by



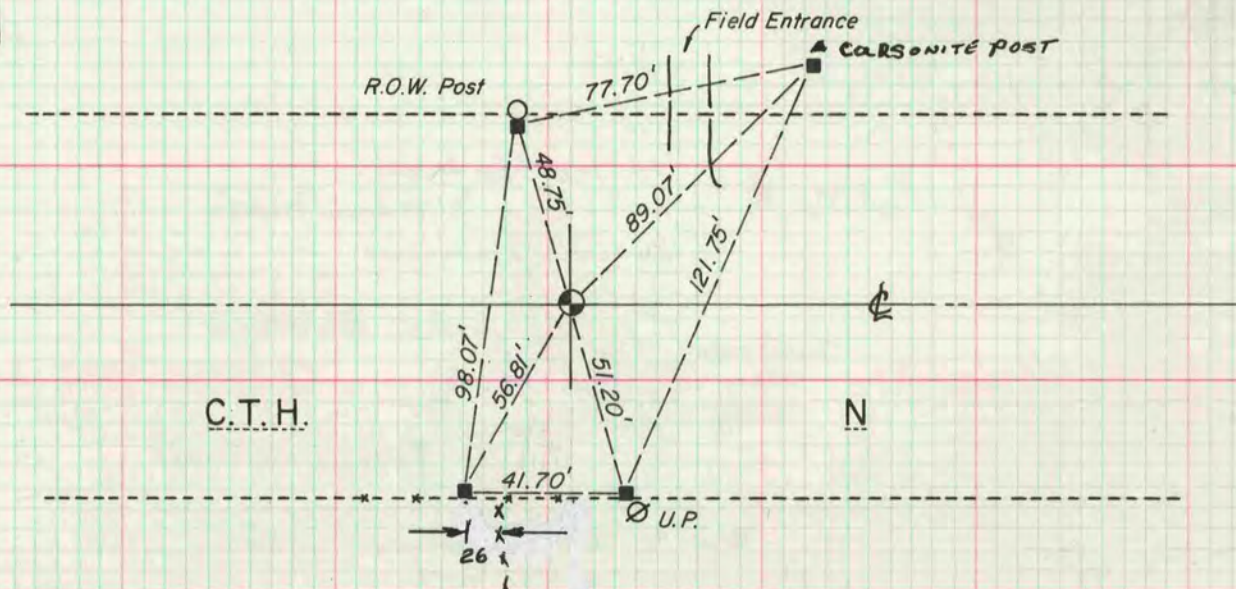
S.E. CORNER - SECTION

Found Brass cap in pavement. Set $\frac{3}{8}$ x 32 bolts as reference monuments. Reference: Volume 3, Page 456. Field Book: Lima, Page 46



MICROFILMED

S. 1/4 CORNER - SECTION 2



Found 1" Iron pipe in monument box. Set $\frac{3}{8}$ x 32 bolts as reference monuments. Reference: Volume 3, Page 455. Field book: Lima, Page 45.