

PLAT AND RECORD

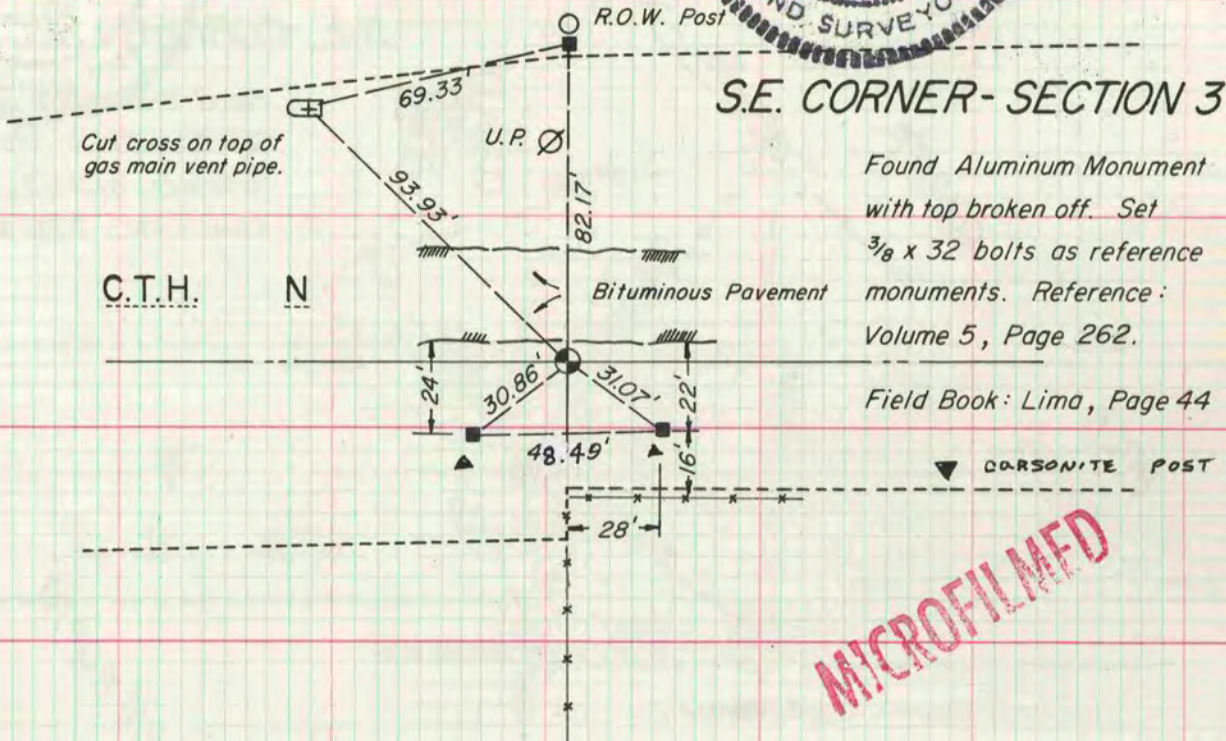
Of a Survey on Section 3 T 4N., R 14 E. of the 4 P. M. in _____ Township
 Rock County, Wisconsin, made April the _____ 2022

I hereby certify that the following is a correct record of said survey as made by me.

COUNTY BUILDING
CITY OF JANESVILLE

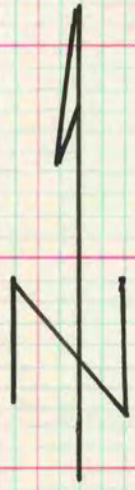


Donald Barnes

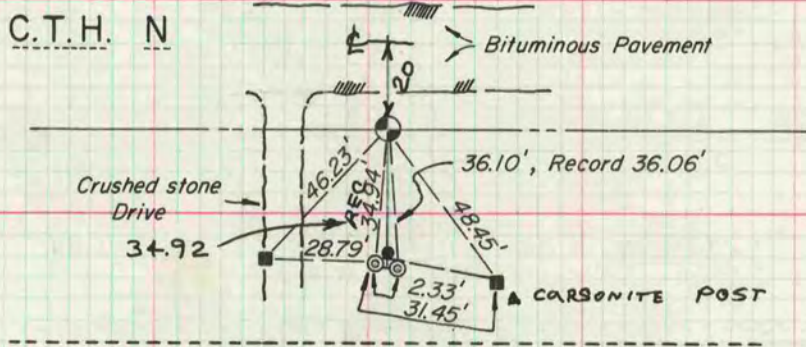


Found Aluminum Monument with top broken off. Set $\frac{3}{8}$ x 32 bolts as reference monuments. Reference: Volume 5, Page 262.
 Field Book: Lima, Page 44

MICROFILMED



S. 1/4 CORNER - SECTION 3



- Set $\frac{3}{8}$ x 32 bolt
- ⊙ Found 1" iron pipe
- R/W POST

Found Aluminum Monument. Reference: Volume 5, Page 545. Field Book: Lima, Page 44.