

PLAT AND RECORD

249

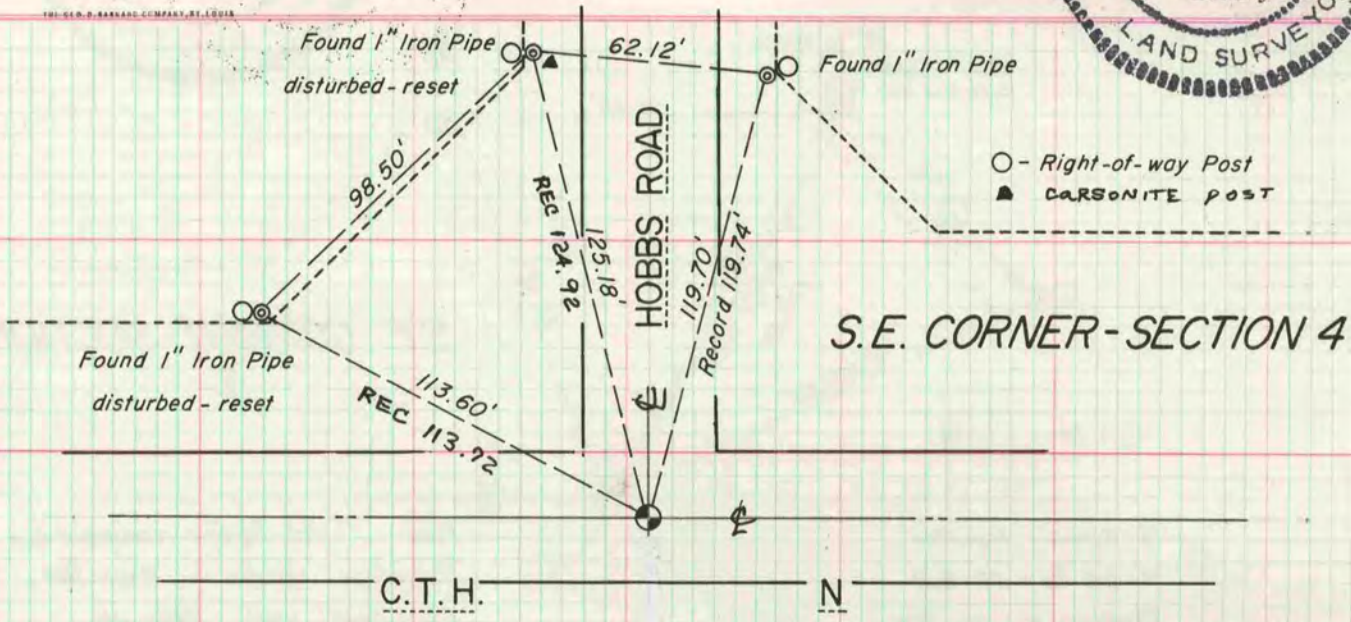
VOL. 6

Of a Survey on Section 4 T 4N., R 14 E. of the 4 P. M. in LIMA Township
 Rock County, Wisconsin, made Apr. 1 the 22

I hereby certify that the following is a correct record of said survey as made by me.

**COUNTY BUILDING
 CITY OF JANESVILLE**

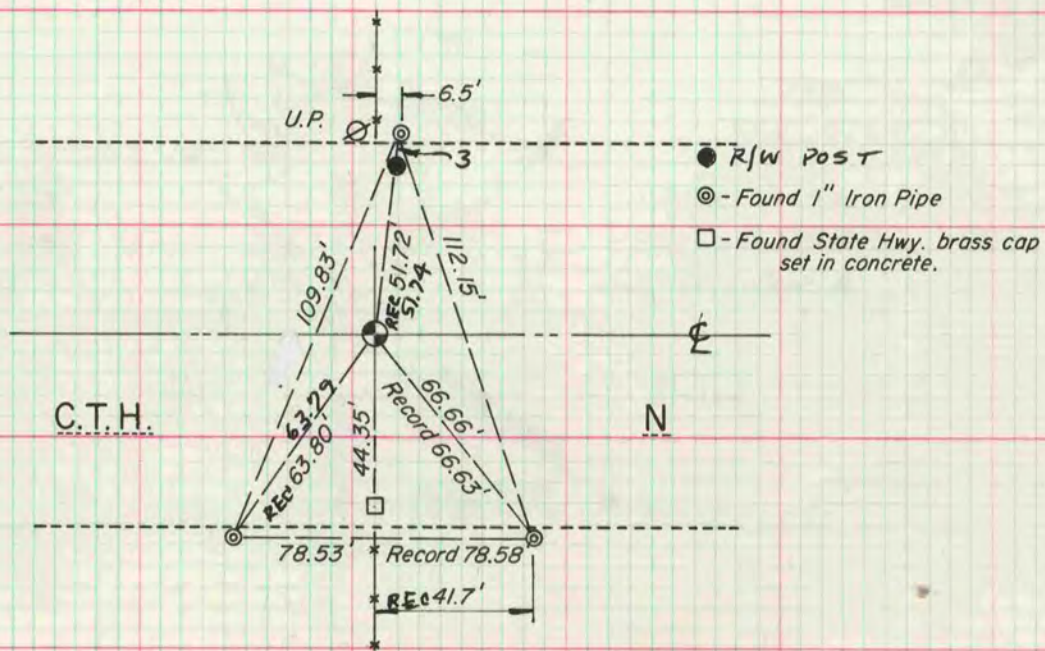
Donald A. Jones



Found Aluminum Monument in pavement. Reference:
 Volume 5, Page 545. Field Book: Lima, Page 43

MICROFILMED

S. 1/4 CORNER - SECTION 4



Found 1" Iron Pipe in monument box.
 Reference: Volume 4, Page 445.
 Field Book: Lima, Page 43.