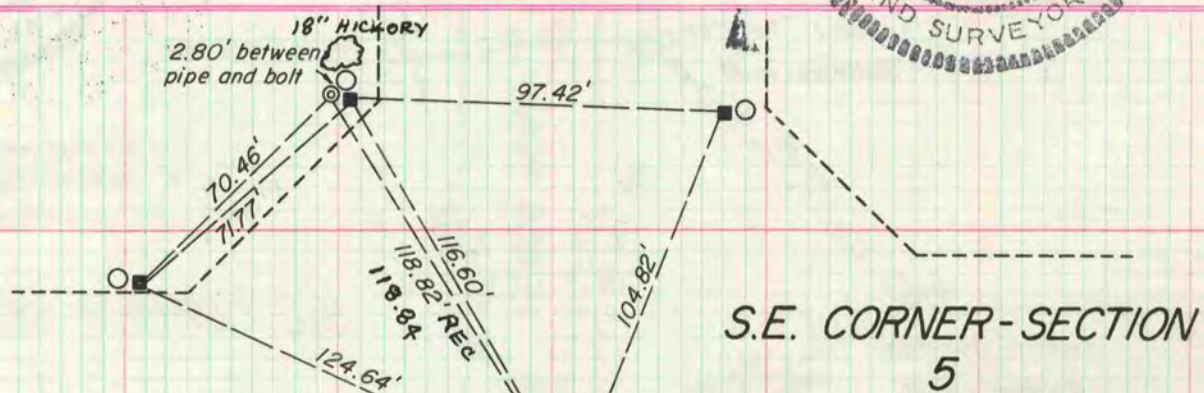


PLAT AND RECORD

Of a Survey on Section 5 T 4N., R 14 E. of the 4 P. M. in LIMA
 Rock County, Wisconsin, made Apr. 6 the 22

I hereby certify that the following is a correct record of said survey as made by me.

COUNTY BUILDING
CITY OF JANESVILLE



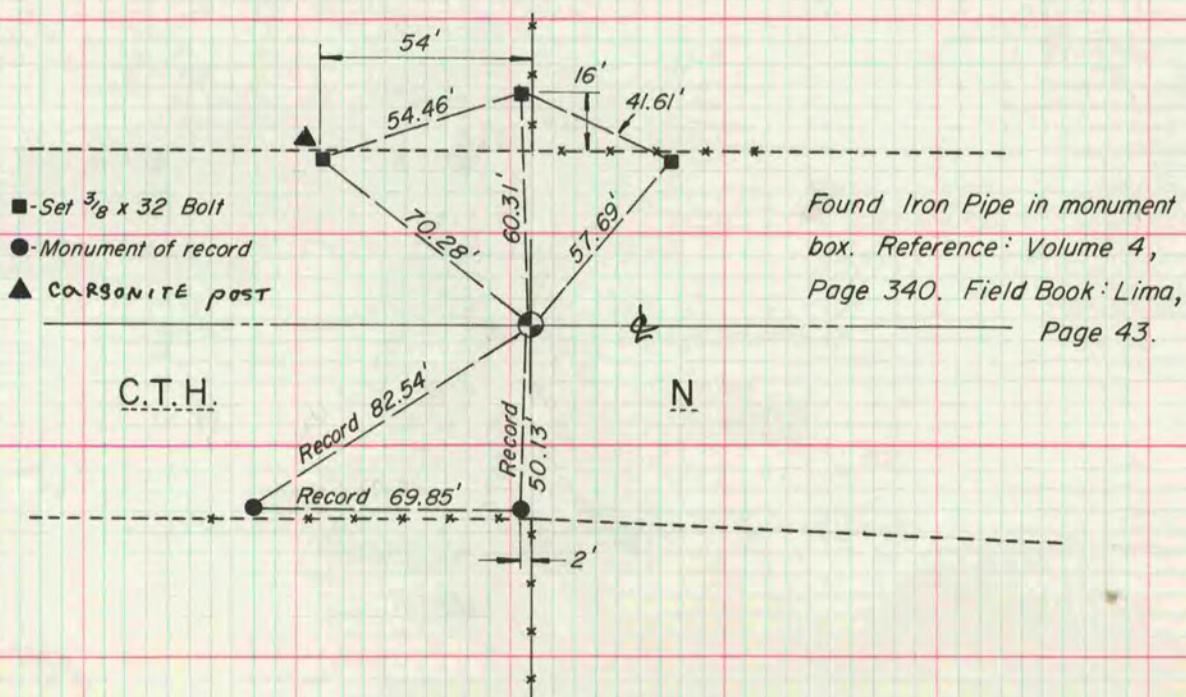
- ⊙ - Found 1" Iron Pipe
- - Set 3/8 x 32 Bolt
- - Right-of-way Post

Found 1" Iron Pipe in monument box.
 Reference: Volume 4, Page 348.
 Field Book: Lima, Page 46
 ON LINE WITH THE EAST EDGE OF THE
 PVMT OF CTH KK



MICROFILMED

S. 1/4 CORNER - SECTION 5



- - Set 3/8 x 32 Bolt
- - Monument of record
- ▲ CARBONITE post

Found Iron Pipe in monument
 box. Reference: Volume 4,
 Page 340. Field Book: Lima,
 Page 43.