

PLAT AND RECORD

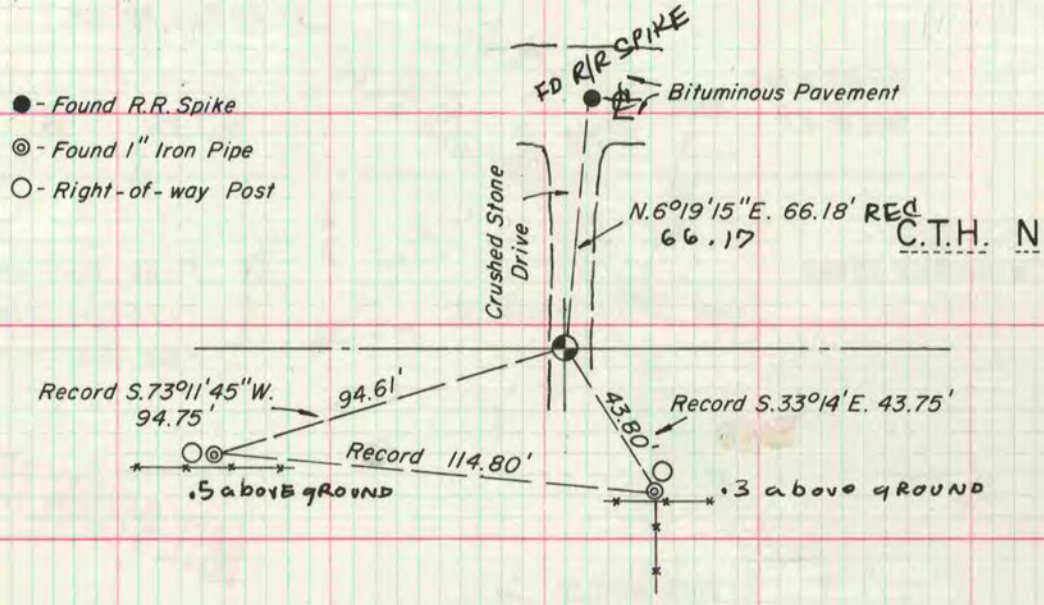
Of a Survey on Section 11 T 4N., R 13 E. of the 4 P. M. in MILTON, WISCONSIN Township
 Rock County, Wisconsin, made April the 22

I hereby certify that the following is a correct record of said survey as made by me.

COUNTY BUILDING
CITY OF JANESVILLE



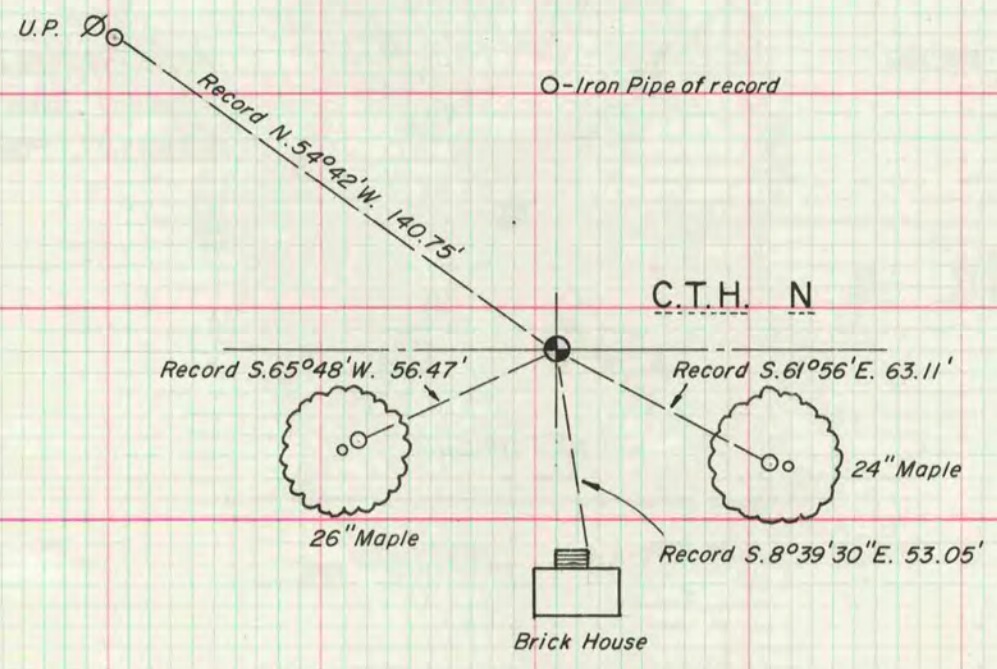
W. 1/4 CORNER - SECTION 11



Found Aluminum Monument. Bearings as shown are based on true North. Reference: Volume 4, Page 104. Field Book: Milton-13, Page 46.

MICROFILMED

CENTER OF SECTION 11



Capped pipe of record at corner. Bearings as shown are based on true North. Reference: Volume 4, Page 324. Field Book: Milton-13, Page 46.