

PLAT AND RECORD

253

VOL. 6

Of a Survey on Section 11 T 4N., R 13 E. of the 4 P. M. in MILTON Township

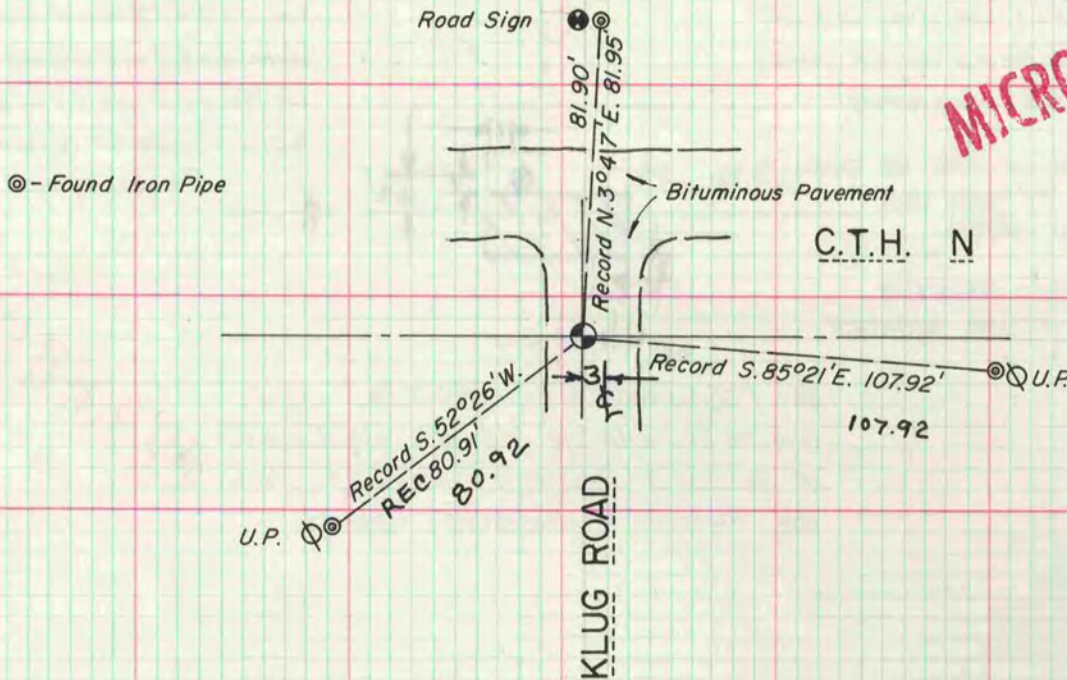
Rock County, Wisconsin, made Apr. 1 the 22

I hereby certify that the following is a correct record of said survey as made by me

COUNTY BUILDING
CITY OF JANESVILLE



E. 1/4 CORNER - SECTION 11



MICROFILMED

Found 1" Iron Pipe in monument box. Reference: Volume 4, Page 324. Field Book: Milton-13, Page 47