

PLAT AND RECORD

257
VOL. 6

Of a Survey on Section 1-6 T 4 R 14 E. of the 4 P. M. in LIMA Township

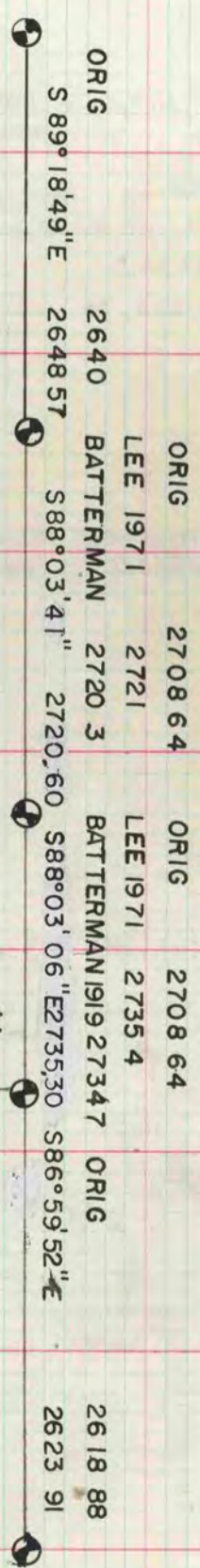
Rock County, Wisconsin, made APRIL the 1982

I hereby certify that the following is a correct record of said survey made by me.

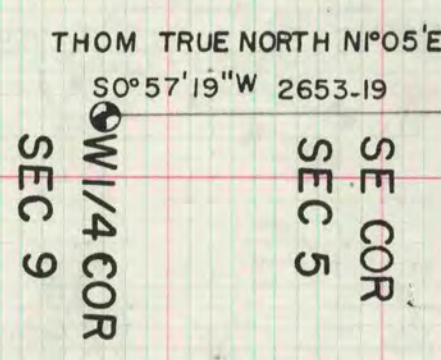
COUNTY BUILDING
CITY OF JANESVILLE



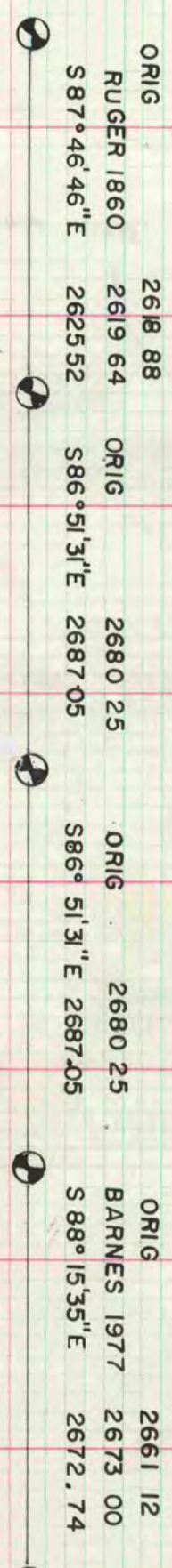
MICROFILMED



S 1/4 COR SEC 6
SE COR SEC 6
S 1/4 COR SEC 5
SE COR SEC 5
S 1/4 COR SEC 4
SE COR SEC 4



W 1/4 COR SEC 9



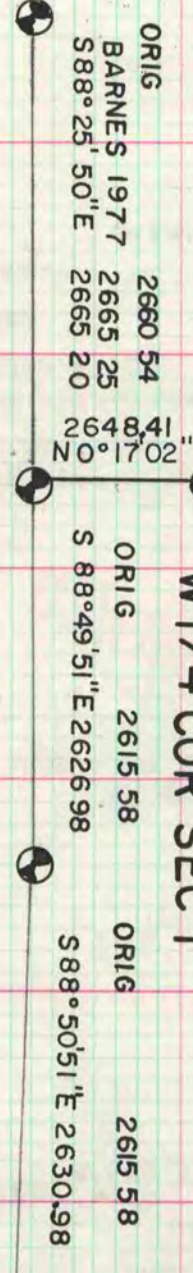
ORIG 2618 88
RUGER 1860 2619 64
S 87° 46' 46\"/>

ORIG 2680 25
S 86° 51' 31\"/>

ORIG 2680 25
S 86° 51' 31\"/>

ORIG 2661 12
BARNES 1977 2673 00
S 88° 15' 35\"/>

S 1/4 COR SEC 4
SE COR SEC 4
S 1/4 COR SEC 3
SE COR SEC 3
S 1/4 COR SEC 2



ORIG 2660 54
BARNES 1977 2665 25
S 88° 25' 50\"/>

ORIG 2615 58
S 88° 49' 51\"/>

ORIG 2615 58
S 88° 50' 51\"/>

S 1/4 COR SEC 2
SE COR SEC 2
S 1/4 COR SEC 1
SE COR SEC 1