

PLAT AND RECORD

Of a Survey on Section ⁴33, ²²T 4 R ¹²12 E. of the 4 P. M. ³12 Township
 Rock County, Wisconsin, made ^{MAY} the 19 82

I hereby certify that the following is a correct record of said survey as made by me.

**COUNTY BUILDING
CITY OF JANESVILLE**



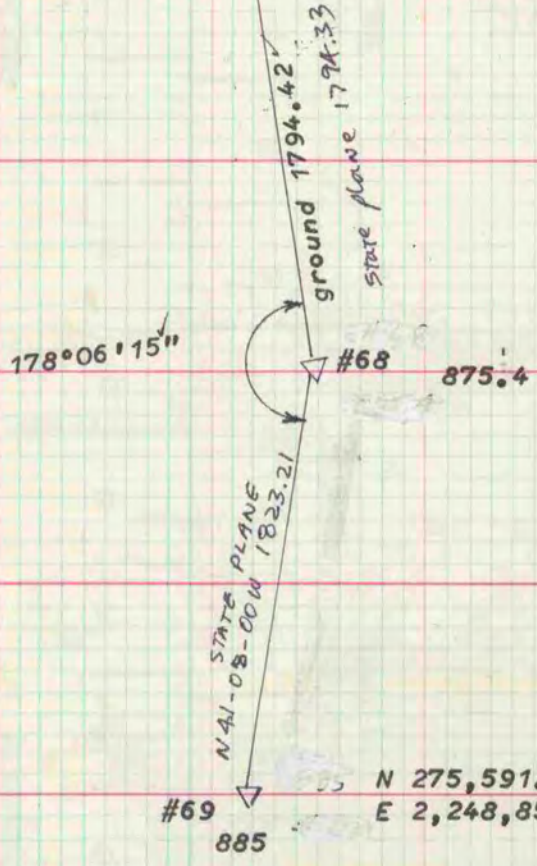
County Surveyor.

N 1/4 COR
SEC 4
JANESVILLE
TWP

S 1/4 COR SEC 33 FULTON TWP
fd alum mon
871.75

TRaverse POINTS ESTABLISHED BY AERO-METRIC
ENGINEERING FOR MAPPING PROJECT. ANGLES AND
DISTANCES TO SECTION CORNERS MEASURED BY ME.

MICROFILM

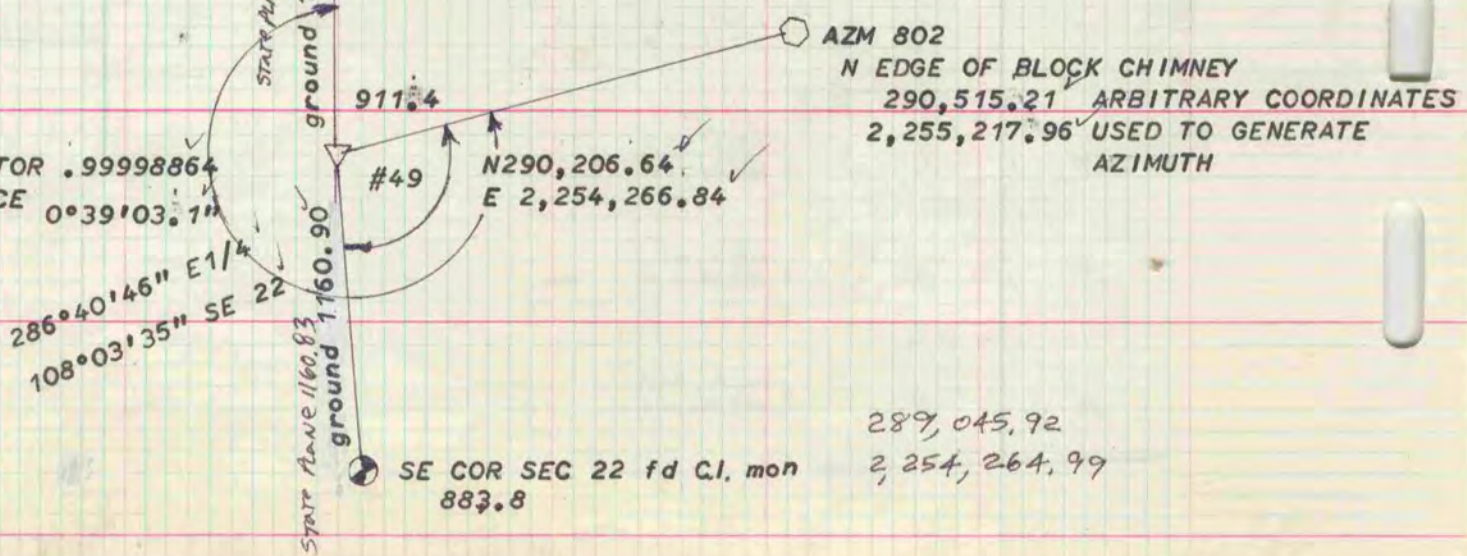


N 276,964.72 ✓ SCALE FACTOR .99999548 ✓
E 2,247,652.23 ✓ CONVERGENCE ANGLE 0°38'00.8"

#69 885 N 275,591.51 ✓ SCALE FACTOR .99999622 ✓
E 2,248,851.56 ✓ CONVERGENCE ANGLE 0°38'11.8"

291,692.28 E 1/4 COR SEC 22 FULTON TWP
fd 1 1/2" X 36" IP replaced with BERNTSEN W-1-C Polystyrene mon.
894.6 ALSO SET CARBONITE POST

SCALE FACTOR .99998864
CONVERGENCE ANGLE 0°39'03.1"



#49 N 290,206.64 ✓
E 2,254,266.84 ✓

AZM 802
N EDGE OF BLOCK CHIMNEY
290,515.21 ARBITRARY COORDINATES
2,255,217.96 USED TO GENERATE
AZIMUTH

289,045.92
2,254,264.99