

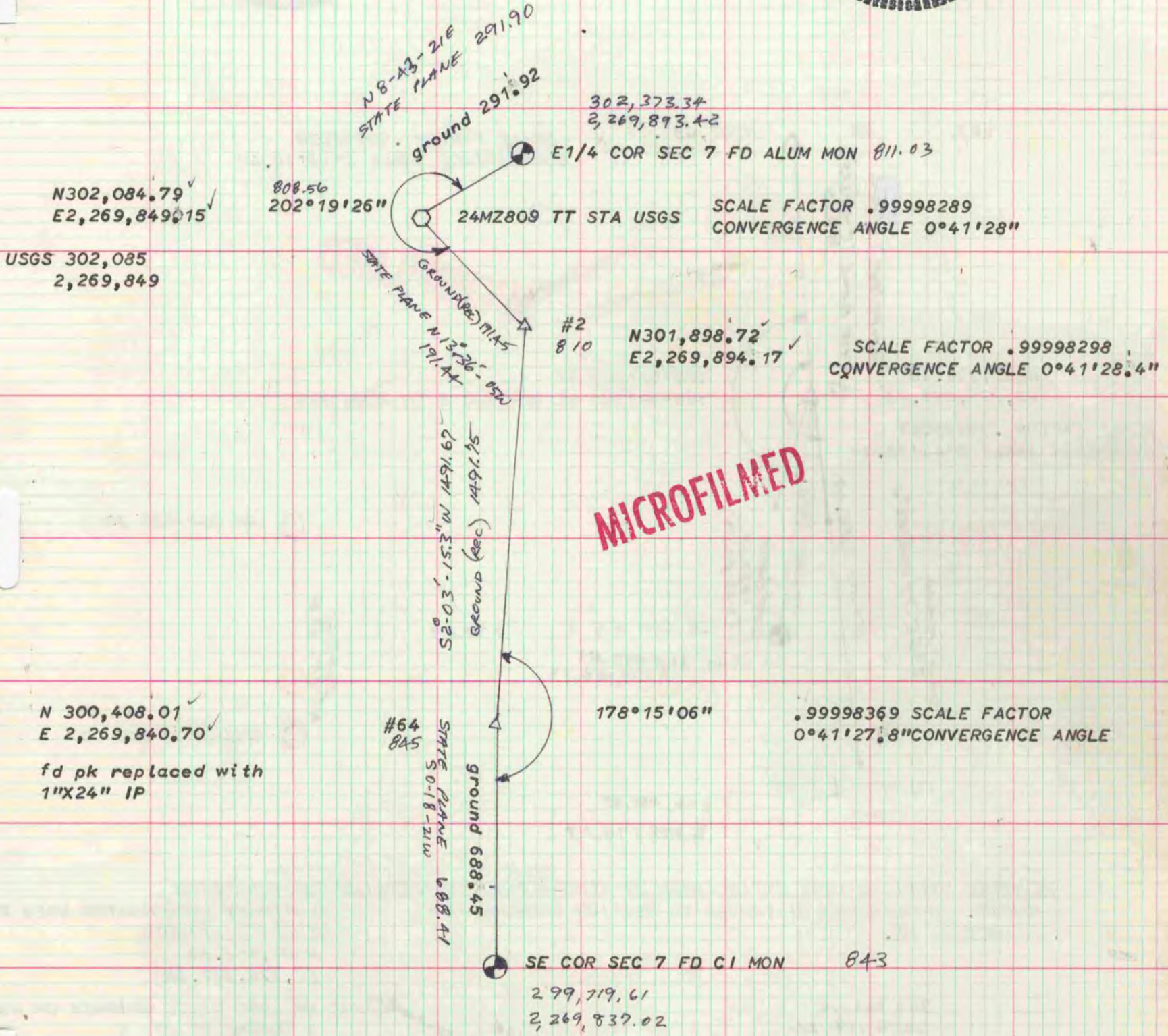
# PLAT AND RECORD

269  
VOL. 6

Of a Survey on Section 7 T 4 R 13 E. of the 4 P. M. in MILWAUKEE Township  
Rock County, Wisconsin, made MAY the 8

I hereby certify that the following is a correct record of said survey made by me.

COUNTY BUILDING  
CITY OF JANESVILLE



TRAVERSE POINTS WERE ESTABLISHED BY AERO-METRIC ENGINEERING FOR MAPPING PROJECT. ANGLES AND DISTANCES TO SECTION CORNERS WERE MEASURED BY ME