

PLAT AND RECORD

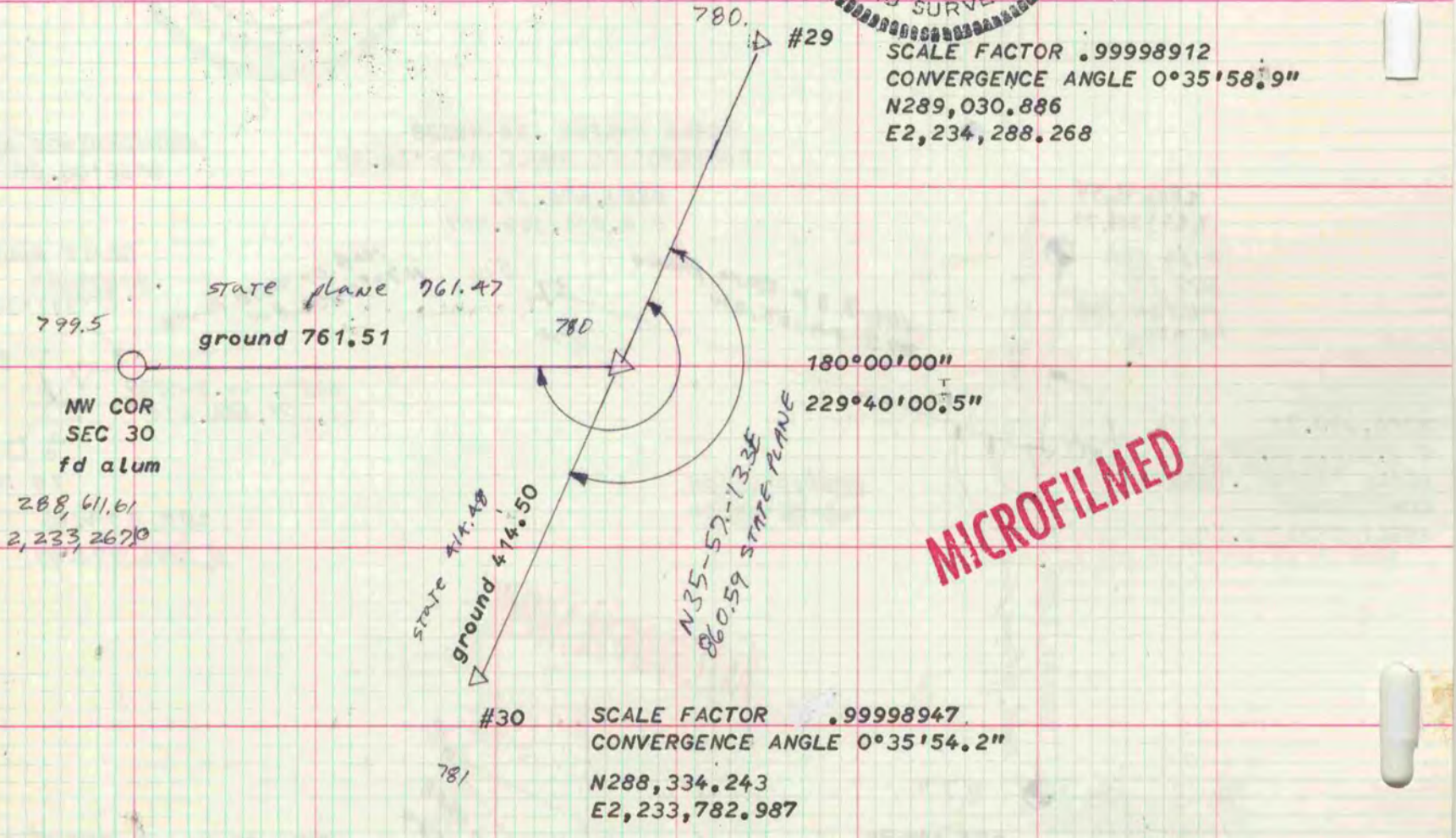
Of a Survey on Section 30 T 4 R 12 E. of the 4 P. M. in \_\_\_\_\_ Township  
Rock County, Wisconsin, made MAY the 7

I hereby certify that the following is a correct record of said survey as made by me



COUNTY BUILDING  
CITY OF JANESVILLE

THE W. P. BARNARD COMPANY, ST. LOUIS



TRAVERSE POINTS WERE ESTABLISHED BY AERO-METRIC ENGINEERING FOR MAPPING PROJECT. ANGLES AND DISTANCES TO SECTION CORNERS WERE MEASURED BY ME.