

PLAT AND RECORD

Of a Survey on Section 7 T 4 R 10 E. of the 4 P. M. in _____ Township
 Rock County, Wisconsin, made MAY the 12

I hereby certify that the following is a correct record of said survey as made by me



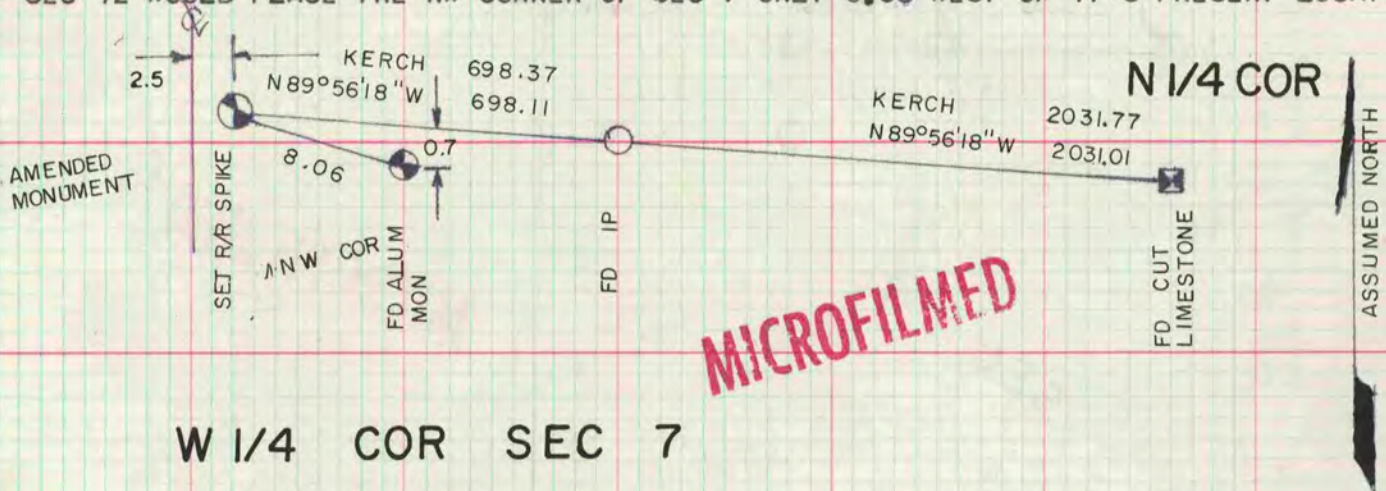
COUNTY BUILDING
CITY OF JANESVILLE

NW COR SEC 7

DATE	SURVEYOR	CHAIN OF EVENTS MONUMENT FOUND	MONUMENT SET
NOV 11, 1833 1858	HARRISON CHURCH	ORIGINAL NOT STATED	POST NOT STATED
1870 SEP	RUGER	FOUND STONE & OLD STAKE UNDER IT	CUT LIMESTONE
DEC 1870	RUGER	FOUND CUT LIMESTONE	
1912	KERCH	FOUND CUT LIMESTONE	

RUGER STATED HE FOUND THE STAKE AND BEARING TREE STUMPS, SO I AM USING HIS LOCATION AS THE ORIGINAL CORNER. THE PRORATION OF RUGER AND KERCH'S RECORD MEASUREMENTS ARE IN HARMONY. THE TRUE POSITION OF THE CUT LIMESTONE APPEARS TO BE WEST OF THE CORNER I ESTABLISHED ON THE TOWNLINE. THEREFORE I AM ESTABLISHING AN AMENDED MONUMENT. A DETAIL EXPLANATION IS IN THE "MANUAL OF SURVEYING INSTRUCTIONS 1973" 5-41 (PAGE 140).

GREEN COUNTY'S TIE SHEETS STATES A STONE WAS FOUND AT THE E 1/4 COR SEC 13 T4NR9E AND AT THE NE CORNER OF SEC 13. THE W 1/4 COR OF SEC 7 IS BETWEEN THESE CORNERS. GREEN COUNTY DID NOT FIND ANYTHING AT THE E 1/4 CORNER OF SEC 12 WHICH IS THE NEXT STANDARD CORNER NORTH OF THE NW CORNER OF SEC 7. IF THE E 1/4 COR OF SEC 12 WAS REJECTED, A STRAIGHT LINE BETWEEN THE W 1/4 COR OF SEC 6 AND THE SE COR OF SEC 12 WOULD PLACE THE NW CORNER OF SEC 7 ONLY 0.53 WEST OF IT'S PRESENT LOCATION.



W 1/4 COR SEC 7

DATE	SURVEYOR	CHAIN OF EVENTS MONUMENT FOUND	MONUMENT SET
Nov 11, 1833 1863	HARRISON LOCKE	ORIGINAL STONE	POST
SEP 1870	RUGER	STONE & OLD STAKE UNDER STONE	CUT LIMESTONE
1912	KERCH	CUT LIMESTONE	

I DID THE SAME AS ABOVE.

