

PLAT AND RECORD

277
VOL. 6

Of a Survey on Section 27 T 4 R 11 E. of the 4 P. M. in PORTER Township

Rock County, Wisconsin, made APRIL the 19 82

I hereby certify that the following is a correct record of said survey, as made by me.

COUNTY BUILDING
CITY OF JANESVILLE

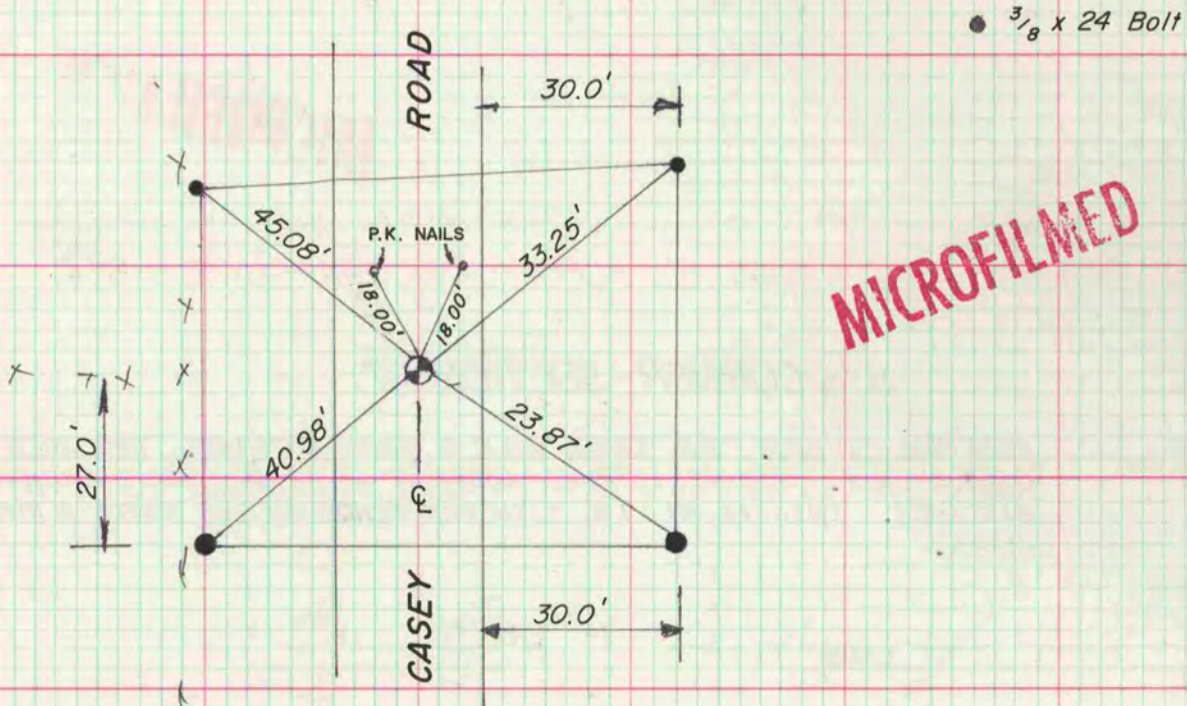
Donald Barnes
S-1216
JANESVILLE
WI.

County Surveyor.



S.W. CORNER - SECTION 27

DUG & FOUND 2"X36" IP 0 4 HH & small pieces of wood stake 8' below the road surface. REPLACED THE 2" IP WITH A 1"X24 IP & SET THE 2" IP HORIZONTALLY ON TOP (8' DEEP).



N 1/4 COR OF SEC 27 FD IP AS CALLED FOR IN COUNTY SURVEYOR'S RECORDS. REPLACED WITH POLYSTYRENE MONUMENT & SET CARSONITE POST.