

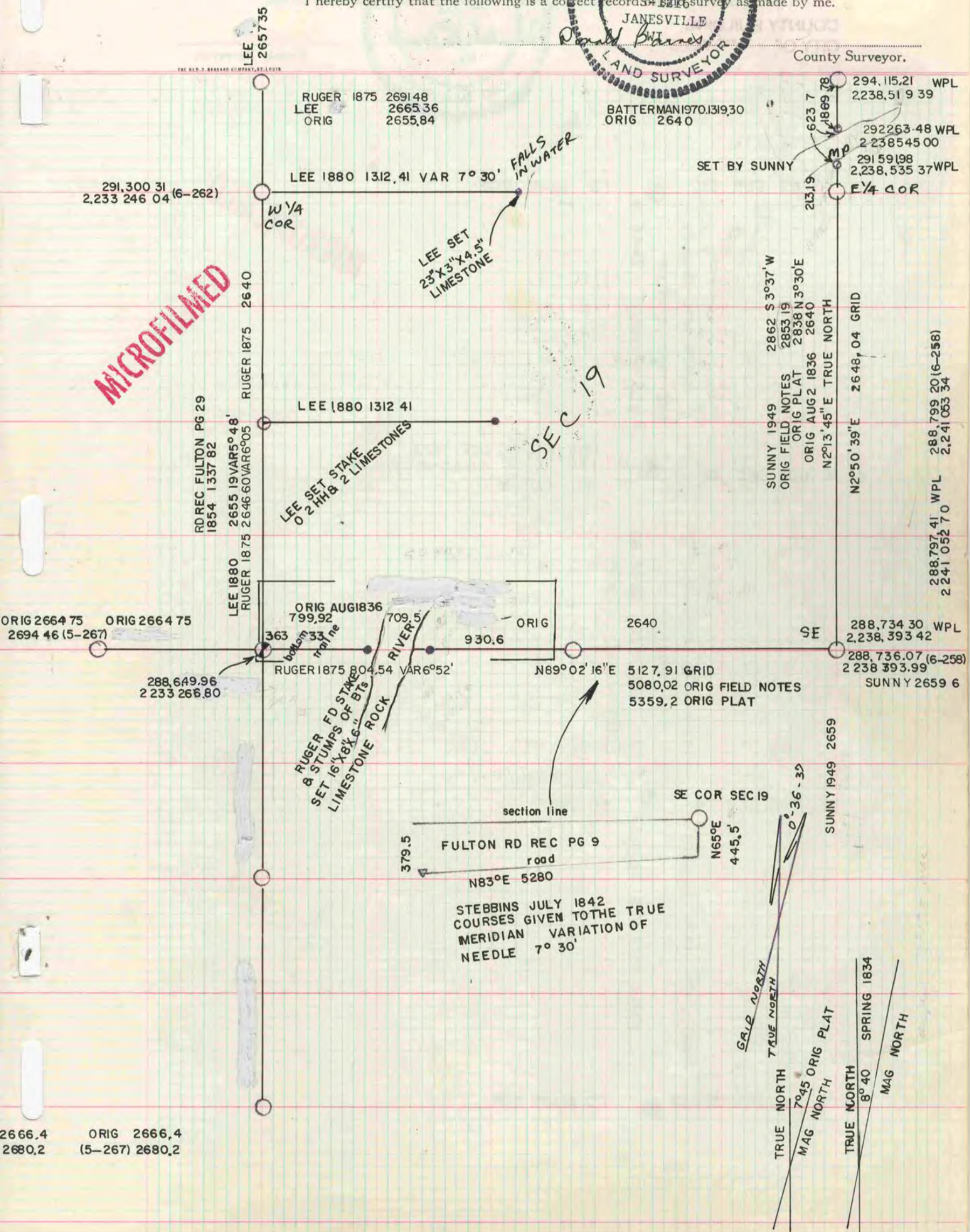
Of a Survey on Section 19 T 4 R 12 E. of the ... Township
Rock County, Wisconsin, made APRIL 19 83

I hereby certify that the following is a correct record of a survey as made by me.



County Surveyor.

MICROFILMED



2666.4 ORIG 2666.4
2680.2 (5-267) 2680.2

288,797.41 WPL
2241.05270
288,799.20 (6-258)
2,241.05334

288,734.30 WPL
2,238.39342
288,736.07 (6-258)
SUNNY 2659.6

294,115.21 WPL
2,238,519.39
292,263.48 WPL
2,238,545.00
291,591.98
2,238,535.37 WPL
E 1/4 COR

BATTERMAN 1970.1319.30
ORIG 2640

RUGER 1875 2691.48
LEE 2665.36
ORIG 2655.84

SUNNY 1949 2862 S 3°37' W
ORIG FIELD NOTES 2853.19
ORIG PLAT 2838 N 3°30'E
ORIG AUG 2 1836 2640
N 2°13'45\"/>

LEE SET STAKE
O 2 H/8 2 LIMESTONES

LEE SET
23\"/>

RUGER FD STAKE
& STUMPS OF BTs
SET 16\"/>

STEBBINS JULY 1842
COURSES GIVEN TO THE TRUE
MERIDIAN VARIATION OF
NEEDLE 7° 30'

TRUE NORTH
MAG NORTH
7° 45' ORIG PLAT
TRUE NORTH
MAG NORTH
8° 40' SPRING 1834