

Of a Survey on Section 4, 5, 6, 7, 8, 9, T 4 R 12 E. of the 4 P. M. in Fulton Township

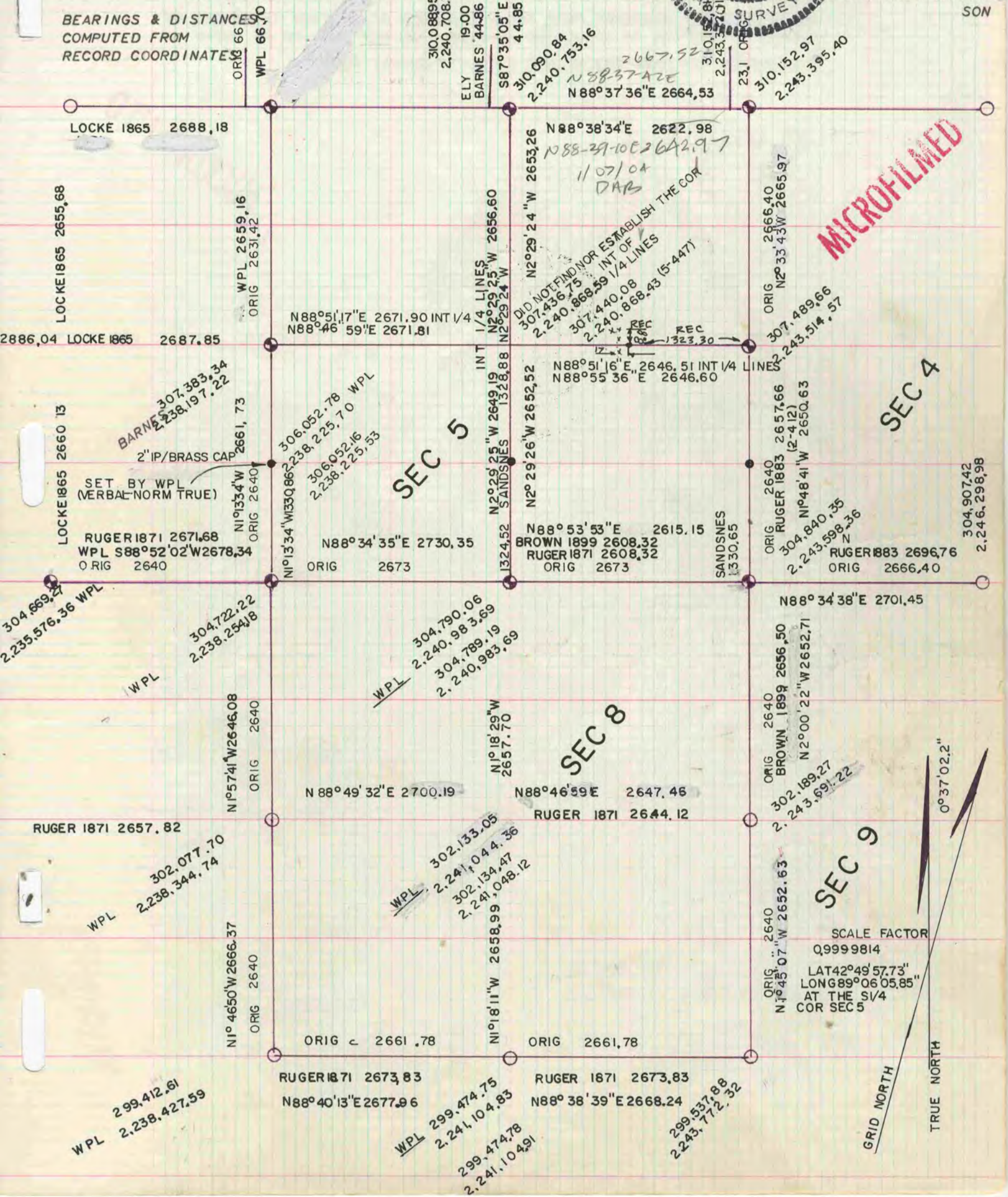
Rock County, Wisconsin, made June the 21st 1983

I hereby certify that the following is a correct record of said survey as made by me.



NOTE: ALL COORDINATES MARKED WPL WERE COPIED FROM DATA PROVIDED BY WISCONSIN POWER & LIGHT. ALL COORDINATES NOT MARKED WPL WERE COPIED FROM DATA PROVIDED BY ROBERT OAK ENG. IN MADISON

BEARINGS & DISTANCES
COMPUTED FROM
RECORD COORDINATES



MICROFILMED

SEC 5

SEC 4

SEC 8

SEC 9

SCALE FACTOR
Q9999814
LAT 42° 49' 57.73"
LONG 89° 06' 05.85"
AT THE S1/4
COR SEC 5

